

# 34 Marlow, £350,000

(Other charges apply)

RICHMOND  
VILLAGES

Part of Bupa

GF

2



2



EPC - C



## 2 bedroom first floor apartment

A spacious ground floor apartment with South-West facing bay window and side door leading to patio area to the front of the property. Accommodation comprises entrance hall, living/dining room, kitchen, two double bedrooms, main with en-suite bathroom and a further family bathroom.

### Specification

- Double glazed box bay window to front elevation. Double glazed windows to side elevation and door leading to patio area.
- Double glazed window to front elevation. A modern fitted kitchen with a range of wall and base units with under cupboard lighting. Integrated appliances to include electric oven, gas hob and extractor fan, fridge freezer, dishwasher and washer/dryer.
- Main bedroom with fitted light oak wardrobe unit with shelf and hanging rail. Radiator. T.V. and telephone point.
- Second bedroom with double glazed window to rear elevation. Range of built in wardrobes. Radiator. T.V. and Telephone point.
- White suite comprising, low level wc, bidet, bath with shower over and wash hand basin set within a fully fitted vanity unit, fitted wall mirror and spotlights. Heated towel rail. Wet room style shower with screen, white suite comprising low level
- WC and wash hand basin set within a fully fitted vanity unit. TV and satellite points\*.
- Well stocked flower borders and lawns maintained by the Village Gardeners.
- Allocated parking space for one car.
- 

\*Satellite subscription not included.

Important Notice: These particulars are intended to give a fair and substantially correct overall description. Other fees and charges apply, please contact the Village Advisers for further details. Properties are sold on a 125 year lease and this property has 108 years remaining.

01604 432 600

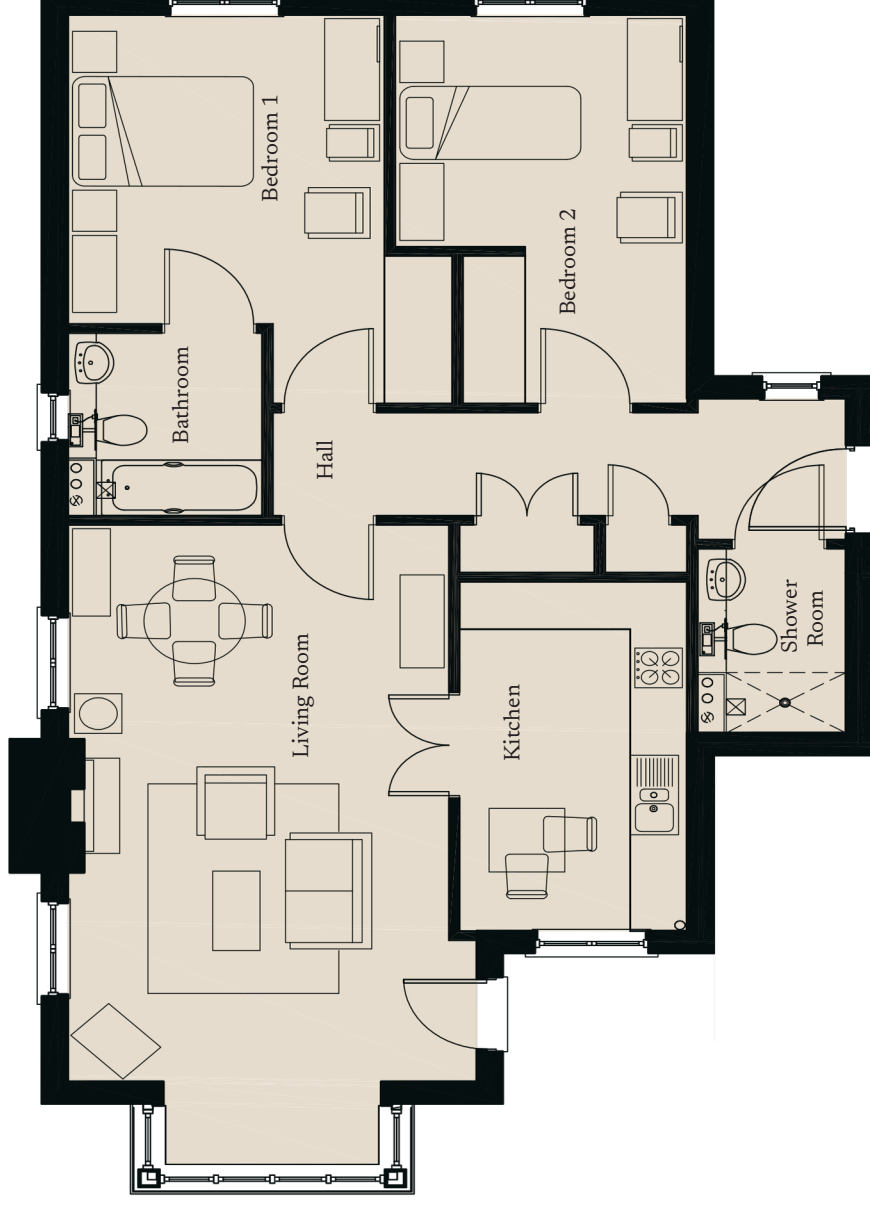
northampton@richmond-villages.com

Richmond Villages Northampton,  
Bridge Meadow Way, Grange Park, Northampton NN4 5EB

# 34 Marlow

Ground Floor | 92m<sup>2</sup>

- 14'5" x 7'10"  
Kitchen  
4419mm x 2437mm
- 26'6" x 14'8"  
Living Room  
8107mm x 4328mm
- 16'1" x 10'11"  
Bedroom 1  
4907mm x 3078mm
- 16'1" x 10'11"  
Bedroom 2  
4907mm x 3078mm
- 7'7" x 6'9"  
En-suite  
2346mm x 2103mm
- Bathroom  
2346mm x 2103mm  
7'7" x 5'9"



These particulars are intended to give a fair and substantially correct overall description.

Measurements have been taken at 1500mm skimming height.

All dimensions are approximate. Bedroom measurements include the wardrobe if applicable. Room measurements include bay windows if applicable.

Furniture layout is to give an indicative impression. Although all efforts have been made to ensure its accuracy at time of print dimensions, fixtures, fittings, finishes and specifications are subject to change without notice.

The properties are sold unfurnished.

