

14 Village Centre, £175,000

(Other charges apply)

RICHMOND
VILLAGES

Part of Bupa

FF

1



1



EPC - C



1 bedroom first floor apartment

A spacious first-floor one bedroom apartment with woodland views. The apartment is situated close to the main village center and village facilities, for easy access to the restaurant, reception, hair and beauty salon.

Specification

- A spacious living room with double glazed box bay window. Feature fireplace.
- Modern fitted kitchen with range of wall and base units and integrated fridge.
- Master bedroom with double glazed window complete with a range of fitted wardrobe units and drawers.
- En-suite shower room with shower area and screen.
- TV and satellite points*.
- Well stocked flower borders and lawns maintained by the Village Gardeners.
- Allocated parking space for one car.



*Satellite subscription not included.

Important Notice: These particulars are intended to give a fair and substantially correct overall description. Other fees and charges apply, please contact the Village Advisers for further details. Properties are sold on a 125 year lease and this property has 114 years remaining.

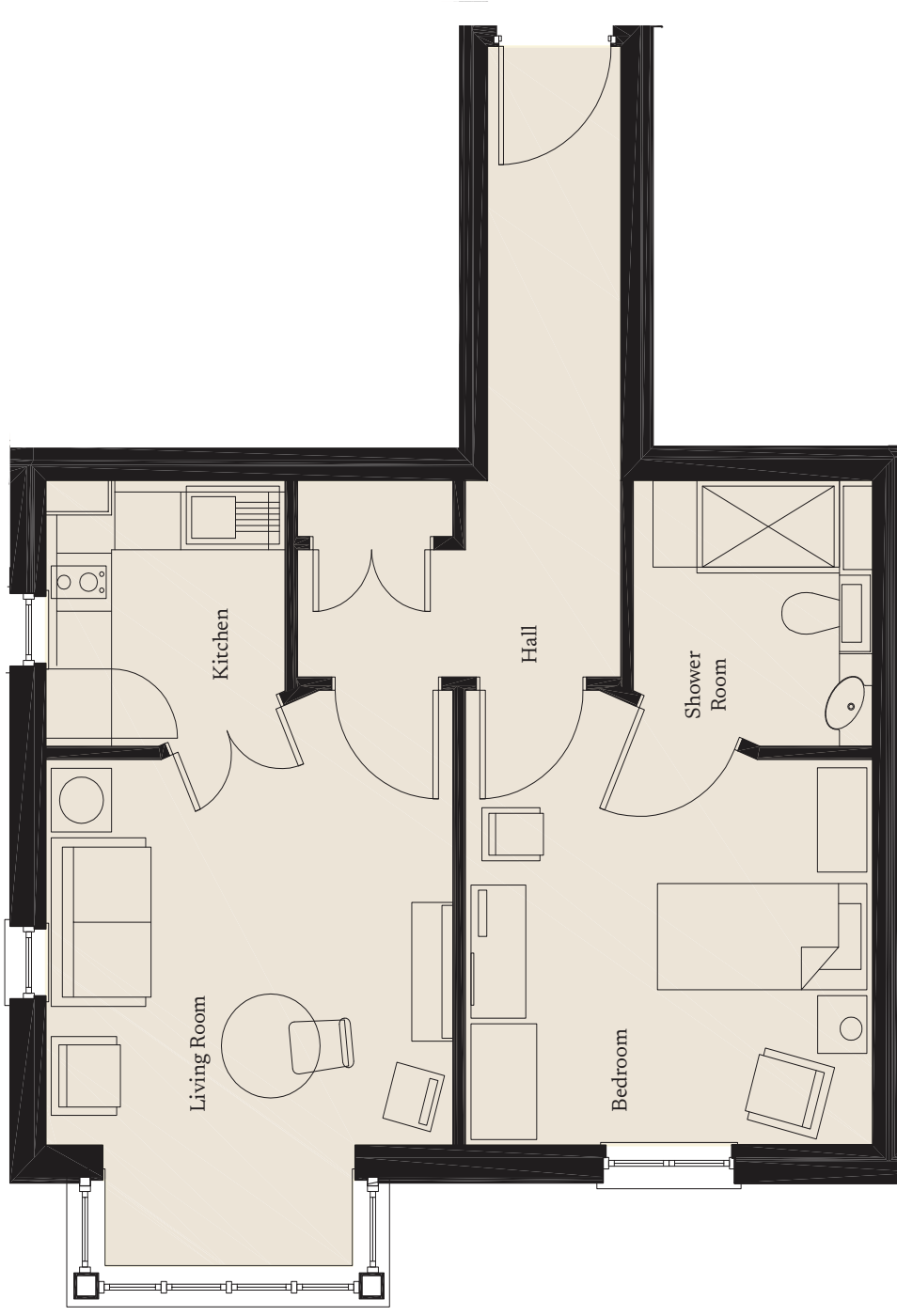
01604 432 600

northampton@richmond-villages.com

Richmond Villages Northampton,
Bridge Meadow Way, Grange Park, Northampton, NN4 5EB

14 Village Centre

First Floor



- Kitchen
7'6" x 7'1"
- Living Room
14'9" x 12'22"
- Bedroom
12'11" x 12'2"
- Shower Room
7'6" x 7'1"

These particulars are intended to give a fair and substantially correct overall description. Measurements have been taken at 1500mm ceiling height.

All dimensions are approximate. Bedroom measurements include the wardrobe if applicable. Room measurements include bay windows if applicable.

Furniture layout is to give an indicative impression. Although all efforts have been made to ensure its accuracy at time of print dimensions, fixtures, fittings, finishes and specifications are subject to change without notice.

The properties are sold unfurnished.

