

# 36 Marlow – OIRO £385,000

RICHMOND  
VILLAGES

Part of Bupa

FF

2



2



EPC - C



## 2 bedroom independent living apartment

This southwest facing two bedroomed apartment enjoys spacious accommodation with large private balcony. The apartment has easy access to the village facilities including restaurant, bar, hair salon, library, lounge and café, games lawn and landscaped gardens.

### Specification

- Large living room with box bay window and French doors leading to large balcony. Electric fire with feature fire surround.
- Recently renovated modern fitted kitchen with integrated appliances including electric oven, induction hob, fridge freezer, dishwasher and washer/dryer.
- Master bedroom with fitted light oak wardrobe.
- En-suite bathroom with bath with shower over, fitted sanitary ware and heated towel rail.
- Second bedroom with range of built in wardrobes.
- Shower room with walk-in shower, fitted sanitary ware and heated towel rail.
- Entrance hall with storage cupboard.
- Double glazing, TV and satellite points\*
- Laid lawns and well stocked flower borders maintained by the Village Gardeners.
- Allocated parking space for one car.

\*Satellite subscription not included.

Important Notice: These particulars are intended to give a fair and substantially correct overall description. **Other fees and charges apply**, please contact the Village Advisers for further details. Properties are sold on a 125 year lease and this property has 111 years remaining.

01604 432600

northampton@richmond-villages.com

Richmond Villages Northampton,  
Bridge Meadow Way, Grange Park, Northampton NN4 5EB

# 36 Marlow

## First Floor

**Kitchen**

14'5" x 7'10"

**Living Room**

16'6" x 14'2"

**Bedroom 1**

16'1" x 10'11"

**En-suite Bathroom**

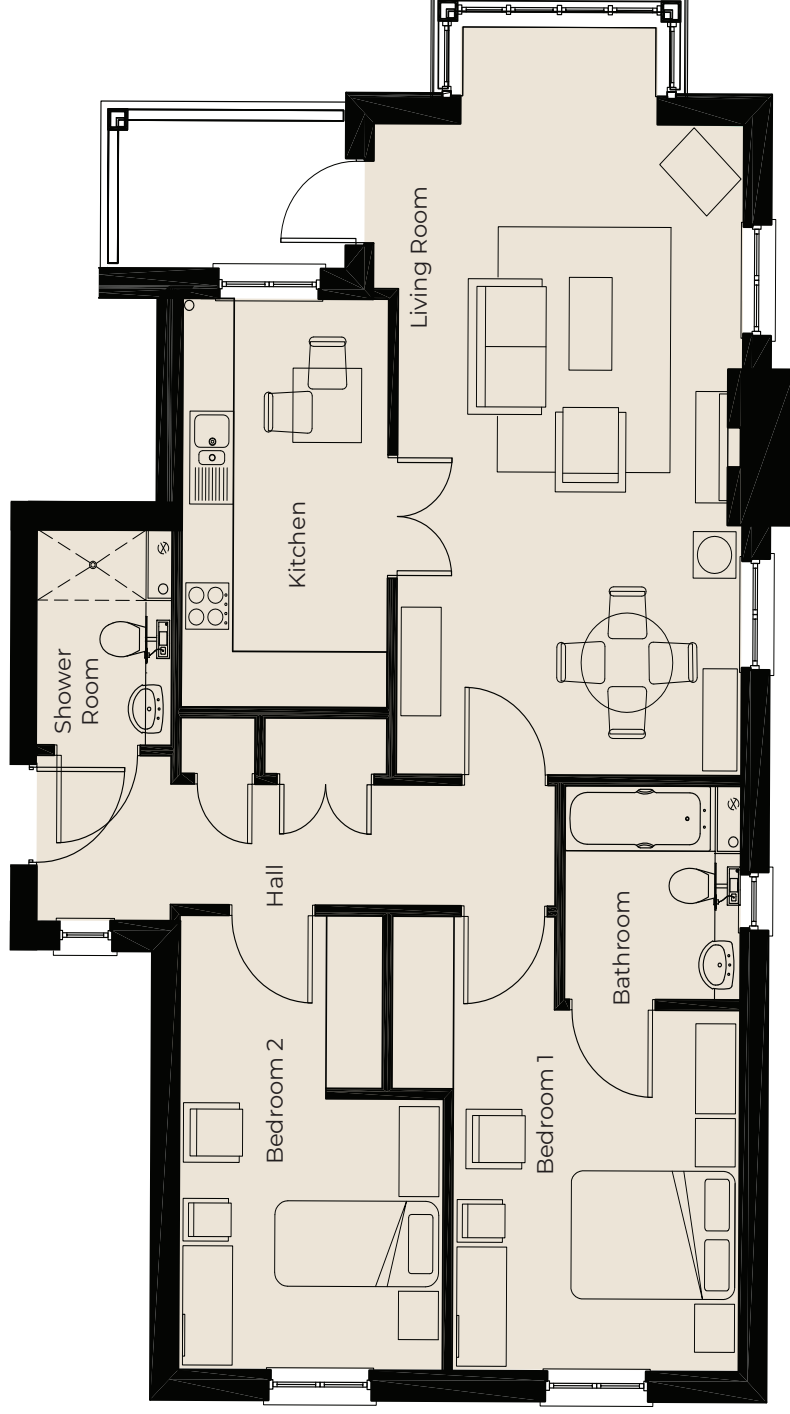
7'7" x 6'9"

**Bedroom 2**

16'1" x 10'1"

**Shower Room**

7'7" x 5'7"



These particulars are intended to give a fair and substantially correct overall description. Measurements have been taken at 1500mm skirting height.

All dimensions are approximate. Bedroom measurements include the wardrobe if applicable. Room measurements include bay windows if applicable.

Furniture layout is to give an indicative impression. Although all efforts have been made to ensure its accuracy at time of print dimensions, fixtures, fittings, finishes and specifications are subject to change without notice.

The properties are sold unfurnished.

