

Brook View 18 – £275,000

RICHMOND
VILLAGES

Part of Bupa

(Other charges apply)

FF

1



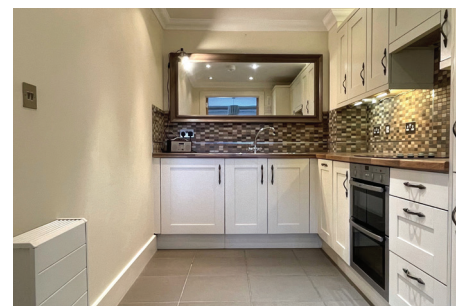
1



EPC - C



£3,000 towards Stamp Duty and Legal Fees**

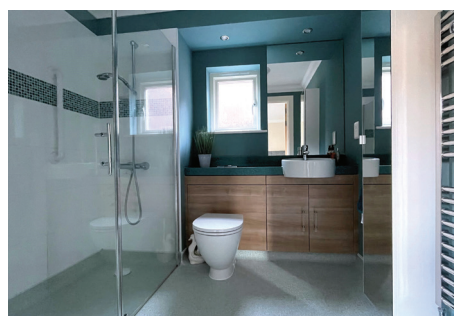


1 bedroom independent living apartment

Richmond Villages are pleased to offer for sale this charming one bedroom apartment situated in a desirable quiet cul-de-sac within the retirement village, adjacent to the lake and nature reserve. The apartment benefits from easy access to the restaurant, bar, reception, art studio, library, wellness spa, outdoor seating areas, bowling green, café and shop.

Specification

- Large dual aspect living room with French doors leading to private balcony. Remote controlled electric fire with Bath stone effect surround.
- Modern fitted kitchen with under-cupboard lighting and integrated appliances including Neff double oven and ceramic hob, Bosch fridge freezer and dishwasher and a washer/dryer.
- Main bedroom with separate dressing room.
- En-suite shower room with walk-in shower, fitted sanitary ware and heated towel rail.
- Entrance hall with storage cupboard.
- TV and satellite points*
- Laid lawns and well stocked flower borders maintained by the Village Gardeners.
- Allocated parking space for one car.



*Satellite subscription not included. **Terms and conditions apply.

Important Notice: These particulars are intended to give a fair and substantially correct overall description. **Other fees and charges apply**, please contact the Village Advisers for further details. Properties are sold on a 125 year lease and this property has 115 years remaining.

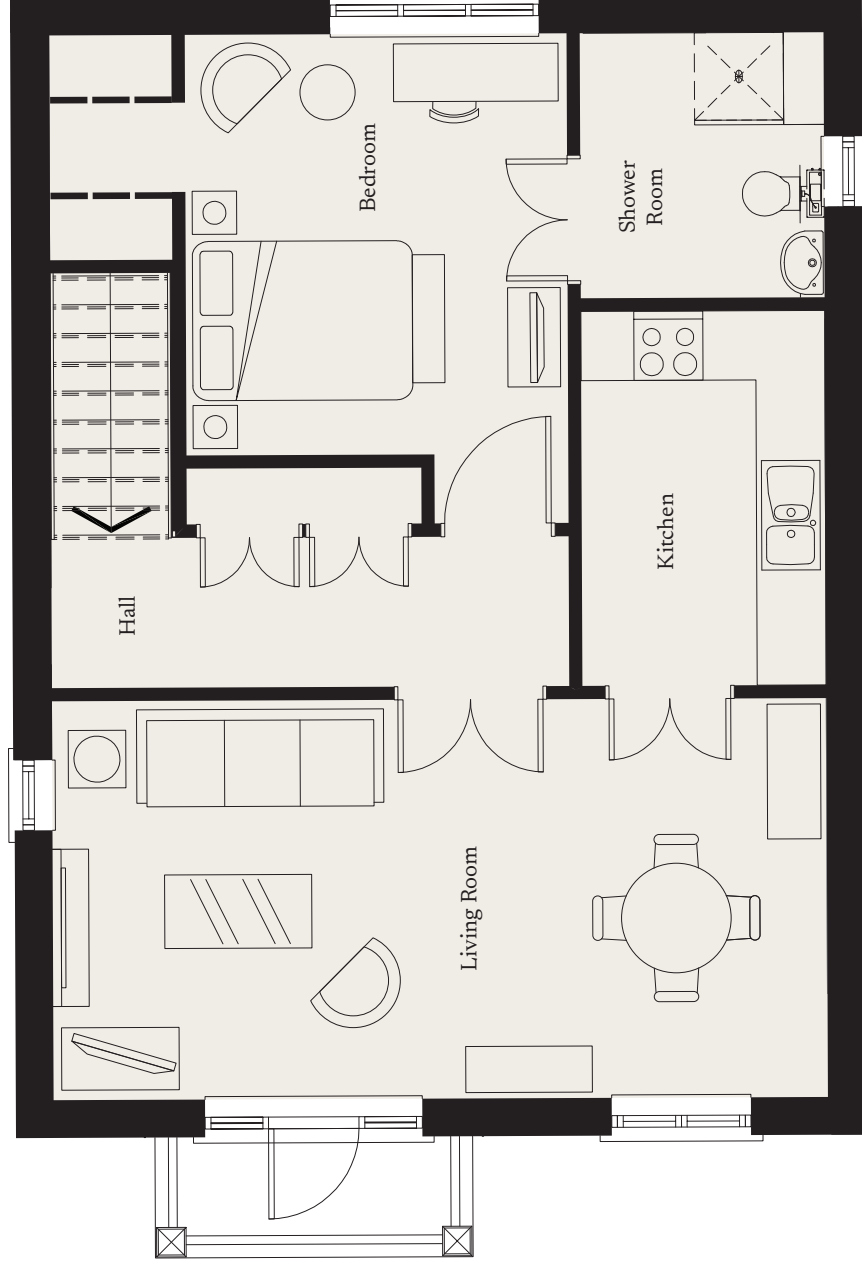
01235 773970

letcomberegis@richmond-villages.com

Richmond Villages Letcombe Regis,
South Street, Letcombe Regis, Oxfordshire OX12 9RG

18 Brook View

First Floor | 689ft²



- Kitchen**
2116mm x 3250mm
6'11" x 11'4"
- Living Room**
6723mm x 3462mm
22'1" x 11'4"
- Bedroom**
3315mm x 3650mm
10'1" x 12'
- Shower Room**
2116mm x 2300mm
6'11" x 7'7"

These particulars are intended to give a fair and substantially correct overall description. Measurements have been taken at 1500mm ceiling height.

All dimensions are approximate. Bedroom measurements include the wardrobe if applicable. Room measurements include bay windows if applicable. Furniture layout is to give an indicative impression. Although all efforts have been made to ensure its accuracy at time of print dimensions, fixtures, fittings, finishes and specifications are subject to change without notice.

The properties are sold unfurnished.

