

17 Boveney – £79,950

RICHMOND
VILLAGES

Part of Bupa

GF

1



1



EPC - C



1 bedroom assisted living apartment

Situated on the first floor, this sunny, beautifully presented, south-facing apartment has widespread views over the local area. The accommodation comprises a living/dining room, galley kitchenette, and large double bedroom with en-suite shower facilities.

Specification

- Spacious living room with a feature fireplace and double doors with Juliet balcony
- Kitchenette with a range of cupboards and fridge-freezer compartment.
- Double bedroom with built-in wardrobe
- Shower room with walk-in shower and fitted white suite.
- TV and satellite points*.
- Well stocked flower borders and lawns maintained by the Village Gardeners.
- Allocated parking space for one car.



*Satellite subscription not included.

Important Notice: These particulars are intended to give a fair and substantially correct overall description. **Other fees and charges apply**, please contact the Village Advisers for further details. Important notice: CGI imagery is used for guidance and illustrative purposes only and does not represent the specific apartment for sale. Properties are sold on a 125 year lease and this property has 113 years remaining.

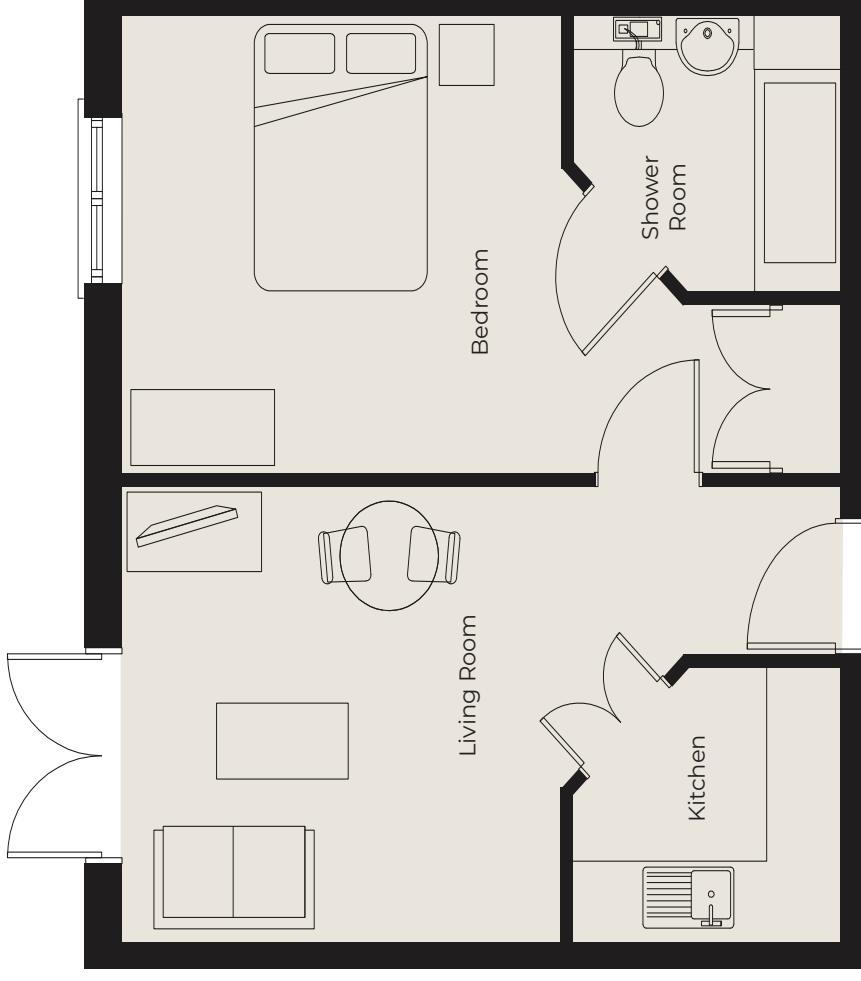
02476 645544

bedevillage@richmond-villages.com

Richmond Villages Bede,
Hospital Lane, Bedworth, Warwickshire CV12 0PB

17 Boveney

First Floor | 460ft²



- Kitchenette**
2413mm x 1981mm
7'11" x 6'6"
- Living Room**
3657mm x 3479mm
12' x 11'5"
- Bedroom**
3657mm x 3479mm
12' x 11'5"
- Bathroom**
2413mm x 1981mm
7'11" x 6'6"

These particulars are intended to give a fair and substantially correct overall description.

Measurements have been taken at 1500mm skimming height.

All dimensions are approximate. Bedroom measurements include the wardrobe if applicable. Room measurements include bay windows if applicable.

Furniture layout is to give an indicative impression. Although all efforts have been made to ensure its accuracy at time of print dimensions, fixtures, fittings, finishes and specifications are subject to change without notice.

The properties are sold unfurnished.

