

7 Milestones Close, £320,000

(Other charges apply)

RICHMOND
VILLAGES

Part of Bupa

SF

2



2



EPC - B



2 bedroom second floor apartment

A spacious second-floor two-bedroom apartment at 936 sqft. The apartment is situated close to the main village center and village facilities.

Specification

- Spacious entrance hall with doors off to living room, kitchen, two bedrooms and family bathroom.
- Spacious and bright living room with French doors leading to a balcony. Modern remote controlled electric fire and surround.
- Modern fitted kitchen with granite worktops, under cupboard lighting and built in Neff appliances including electric oven and hob, fridge/freezer and dishwasher.
- A spacious double bedroom with double glazed window.
- A second double bedroom with double glazed East-facing window.
- En-suite shower room with large shower area and glazed screen.
- Bathroom with low level bath with overhead shower and glass screen.
- TV and satellite points*.
- Well stocked flower borders and lawns maintained by the Village Gardeners.
- Allocated parking space for one car.



*Satellite subscription not included.

Important Notice: These particulars are intended to give a fair and substantially correct overall description. Other fees and charges apply, please contact the Village Advisers for further details. Properties are sold on a 125 year lease and this property has 120 years remaining.

01332 794 300

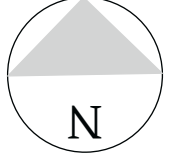
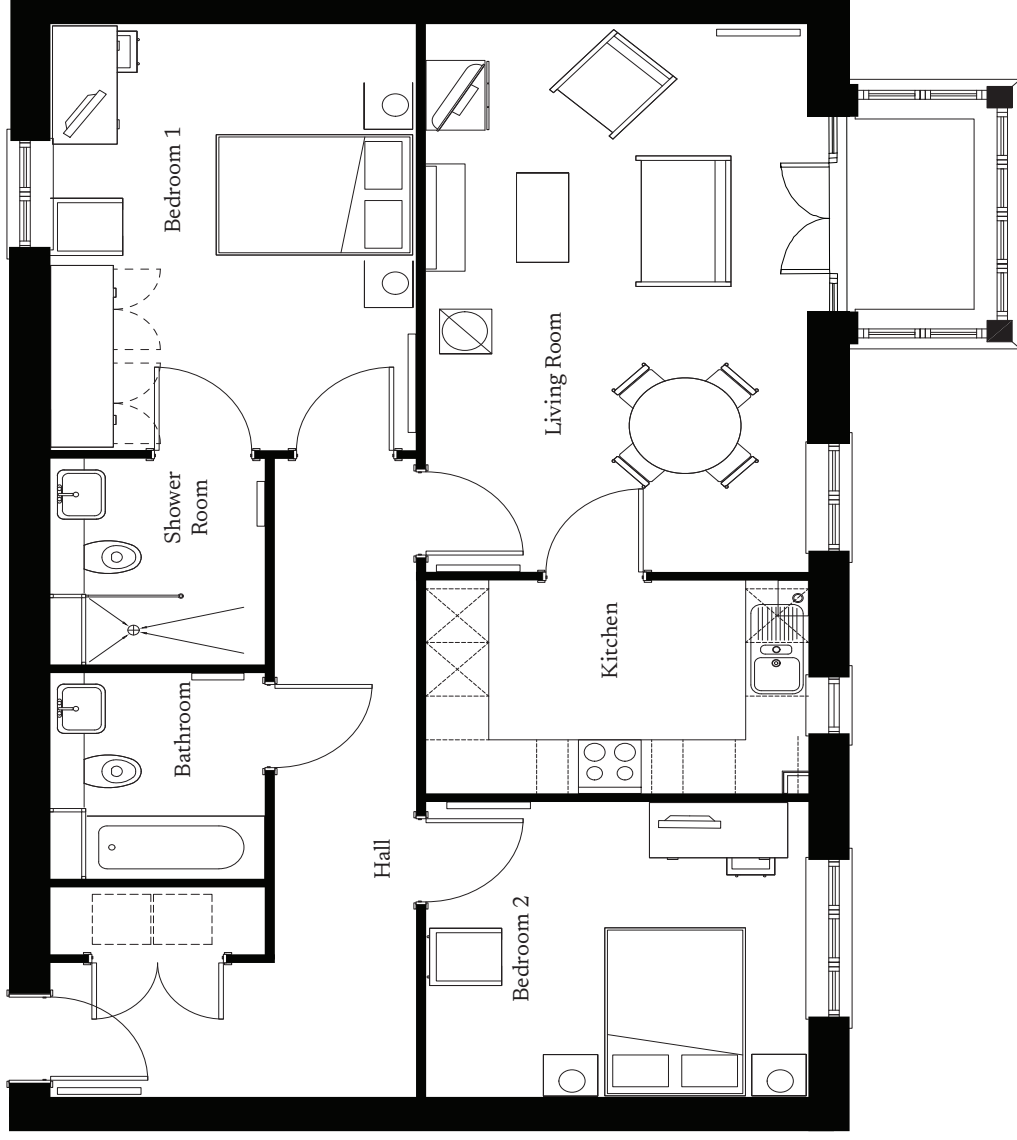
astonontrent@richmond-villages.com

Richmond Villages Aston-on-Trent,
Richmond Drive, Aston-on-Trent, Derbyshire, DE72 2EA

7 Milestones Close

Second Floor | 936ft²

Kitchen	3659mm x 2384mm
	12' x 7'8"
Sitting Room	6125mm x 5270mm
	20'10" x 17'3"
Bedroom 1	4766mm x 3495mm
	15'6" x 11'5"
Shower Room	2300mm x 2050mm
	7'5" x 6'7"
Bedroom 2	3659mm x 3299mm
	12' x 10'8"
Bathroom	2300mm x 2050mm
	7'5" x 6'7"



These particulars are intended to give a fair and substantially correct overall description. Measurements have been taken at 1500mm ceiling height. All dimensions are approximate. Bedroom measurements include the wardrobe if applicable. Room measurements include bay windows if applicable. Furniture layout is to give an indicative impression. Although all efforts have been made to ensure its accuracy at time of print dimensions, fixtures, fittings, finishes and specifications are subject to change without notice. The properties are sold unfurnished.