

# 8 The Avenue, £454,000

(Other charges apply)

RICHMOND  
VILLAGES

Part of Bupa



EPC - C



## Two-bedroom independent living apartment

Richmond Villages Wood Norton are delighted to offer for resale this two-bedroom independent apartment with balcony from Living room with views over open Worcestershire countryside. This apartment is located on the first floor.

### Specification

- Entrance hall with storage cupboard and utility room with Bosch washing machine and tumble dryer.
- Open plan living / dining room with double glazed window and doors leading to balcony with countryside views.
- Modern fitted kitchen with under counter lights, Neff appliances and granite work surfaces.
- Main bedroom with fitted wardrobes and window to open countryside views.
- En-suite shower room with walk in shower and fitted sanitary ware.
- Bedroom Two with fitted wardrobes and window to rear open countryside views.
- Allocated parking space for one car
- Bathroom with bath and fitted sanitary ware.
- Situated within the beautiful Worcestershire countryside



\*Satellite subscription not included.

Important Notice: These particulars are intended to give a fair and substantially correct overall description. Other fees and charges apply, please contact the Village Advisers for further details. Properties are sold on a 125 year lease and this property has 119 years remaining.

01386 862 222

woodnorton@richmond-villages.com

Richmond Villages Wood Norton,  
Evesham Road, Wood Norton, Evesham, Worcestershire WR11 4TY

# 8 The Avenue

Floor 1 | 86.80m<sup>2</sup> - 934.31ft<sup>2</sup>

## Kitchen

2721mm x 3652mm

8'11" x 12'

## Living Room

5723mm x 5668mm

18'9" x 18'7"

## Bedroom 1

4645mm x 3409mm

15'3" x 11'2"

## Shower Room

2300mm x 2180mm

7'7" x 7'2"

## Bedroom 2

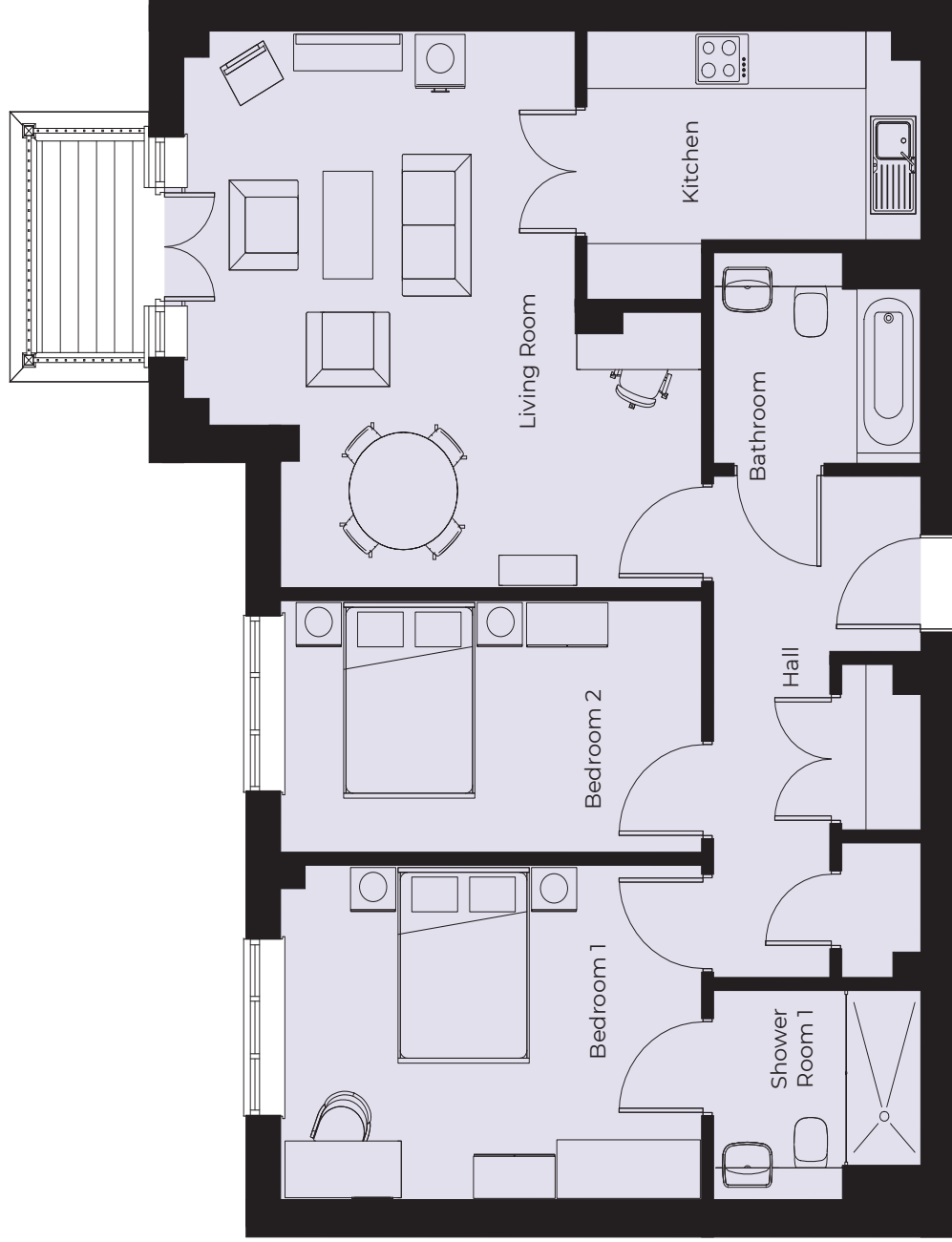
4645mm x 2604mm

15'3" x 8'7"

## Bathroom

2300mm x 2180mm

7'7" x 7'2"



These particulars are intended to give a fair and substantially correct overall description.

Measurements have been taken at 1500mm skirting height.

All dimensions are approximate. Bedroom measurements include the wardrobe if applicable. Room measurements include bay windows if applicable.

Furniture layout is to give an indicative impression. Although all efforts have been made to ensure its accuracy at time of print dimensions, fixtures, fittings, finishes and

specifications are subject to change without notice.

The properties are sold unfurnished.

