

No. 39, £365,000

(Other charges apply)

RICHMOND
VILLAGES

Part of Bupa

FF

2



1



EPC - C



2 bedroom first floor apartment

With direct Westerly views over the Bowling Green and its own balcony to enjoy them from, No 37 is a 2 bedroomed first floor property that is bright and airy throughout.

Specification

- Upon entering the apartment, you will be welcomed into the hallway, which provides access via stairs or handy stair lift to all rooms.
- The bright and airy living / dining room is well proportioned, allowing plenty of space to entertain family or friends, with views across the bowling green.
- The well-equipped fitted kitchen has wall and base units, stainless steel sink and drainer, wood effect work surfaces, built-in eye level Bosch oven, AEG induction hob and integrated Indesit fridge freezer.
- The main bedroom is a light and homely space with views across the bowling green.
- The second bedroom is well sized and offers a flexible space for possible office or craft room.
- A beautifully tiled shower room with WC, wash hand basin set within a fitted vanity unit; heated towel rail and walk in shower.
- Central heating radiators in all rooms. TV and satellite points*.
- Well stocked flower borders and lawns maintained by the Village Gardeners.
- Allocated parking space for one car.

*Satellite subscription not included.

Important Notice: These particulars are intended to give a fair and substantially correct overall description.

Other fees and charges apply, please contact the Village Advisers for further details.

Properties are sold on a 125 year lease and this property has 115 years remaining.

01270 629 080

nantwich@richmond-villages.com

Richmond Villages Nantwich,
St Joseph's Way, Nantwich, Cheshire CW5 6LZ

No. 39

First Floor | 717ft²

Kitchen

2499mm x 2529mm

8'2" x 8'3"

Living Room

4114mm x 4266mm

13'5" x 13'10"

Bedroom 1

3291mm x 3688mm

10'8" x 12'1"

Shower Room

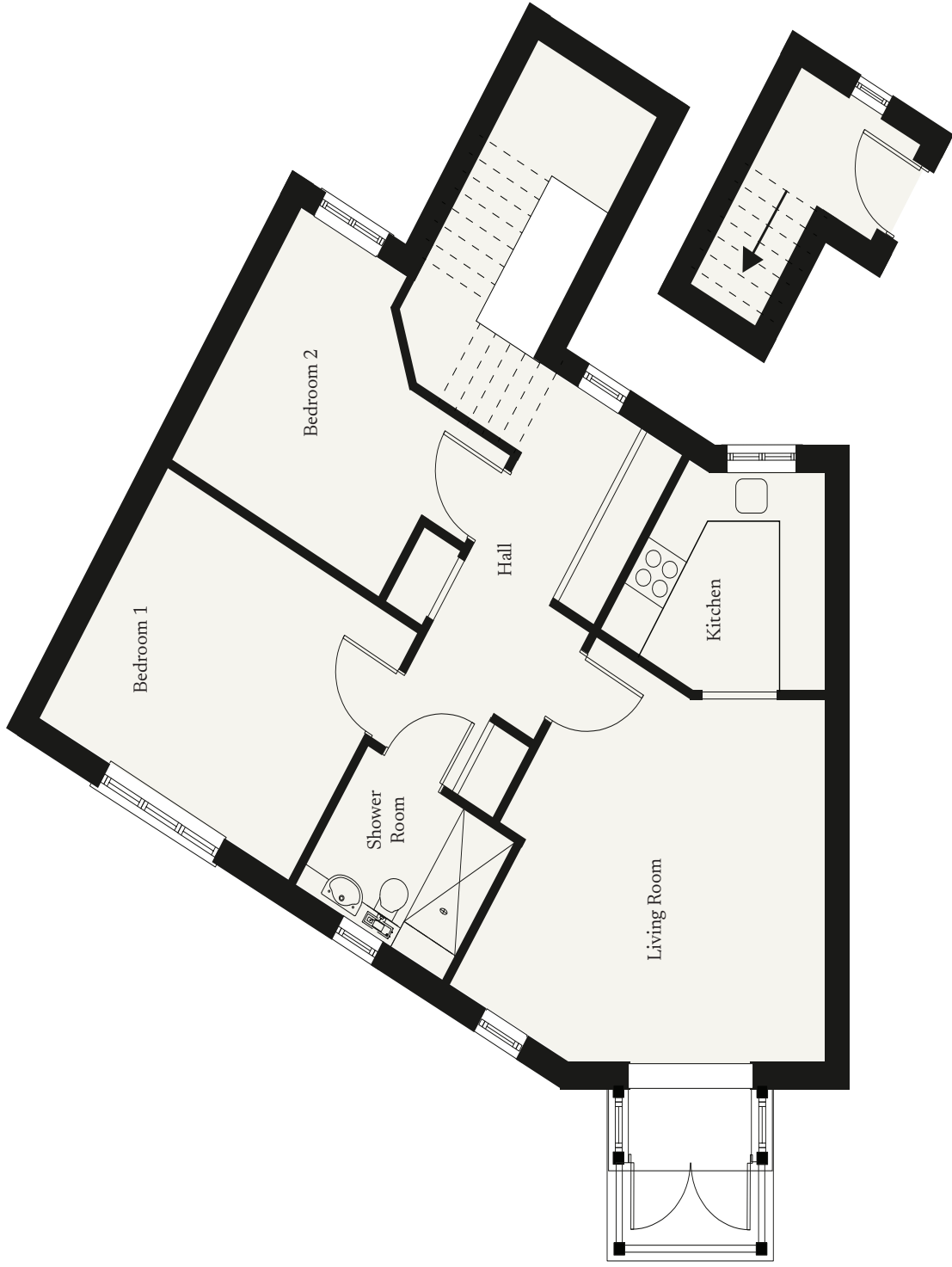
1828mm x 2163mm

5'10" x 6'11"

Bedroom 2

3352mm x 3078mm

10'10" x 10'1"



These particulars are intended to give a fair and substantially correct overall description.

Measurements have been taken at 1500mm skirting height.

All dimensions are approximate. Bedroom measurements include the wardrobe if applicable. Room measurements include bay windows if applicable.

Furniture layout is to give an indicative impression. Although all efforts have been made to ensure its accuracy at time of print dimensions, fixtures, fittings, finishes and specifications are subject to change without notice.

The properties are sold unfurnished.

