

20 Boveney, £107,000

(Other charges apply)

RICHMOND
VILLAGES

Part of Bupa



1



1



EPC - C

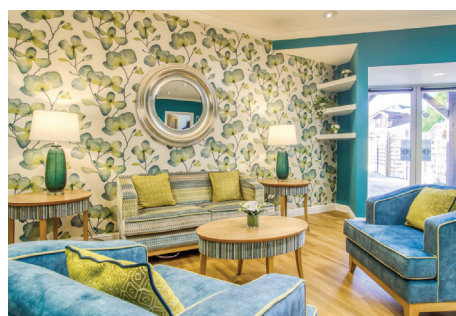


1 bedroom first floor apartment

This charming first-floor apartment offers a peaceful outlook over the lush gardens. This apartment comprises of a bright and spacious living/dining area, a practical galley kitchenette and a large double bedroom complete with en-suite shower facilities.

Specification

- A spacious, dual aspect living room, with a feature fireplace and double doors with a Juliet balcony.
- Kitchenette with a range of cupboards and fridge/freezer compartment.
- A large double bedroom, with built-in storage and doors to the en-suite shower room.
- En-suite shower room with walk-in shower and vanity unit.
- TV and satellite points*.
- Well stocked flower borders and lawns maintained by the Village Gardeners.
- Allocated parking space for one car.



*Satellite subscription not included.

Important Notice: These particulars are intended to give a fair and substantially correct overall description. Other fees and charges apply, please contact the Village Advisers for further details. Properties are sold on a 125 year lease and this property has 118 years remaining.

02476 645 544

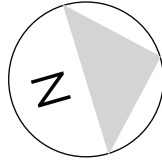
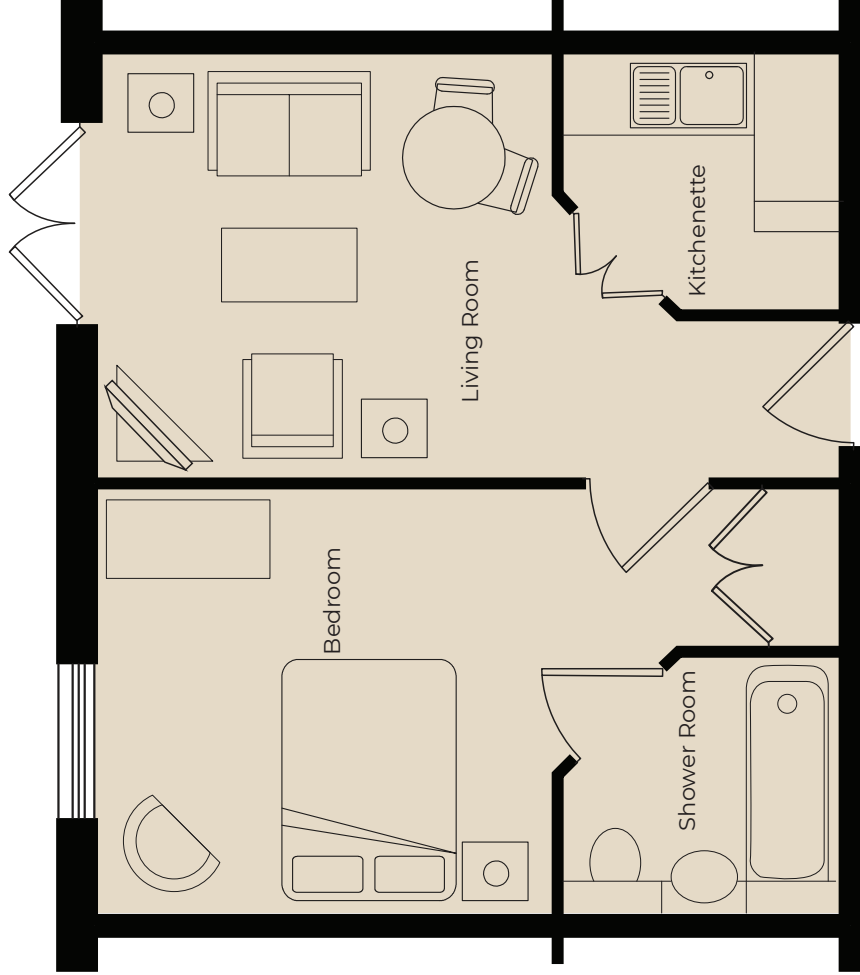
bedevillage@richmond-villages.com

Richmond Villages Bede,
Hospital Lane, Bedworth, Warwickshire CV12 0PB

Apartment 20

- Kitchen**
2200mm x 2000mm
7'1" x 6'6"
- Living Room**
3700mm x 3500mm
12" x 11'5"
- Bedroom 1**
3700mm x 3500mm
12" x 11'5"
- Shower Room**
2200mm x 2000mm
7'1" x 6'6"

First Floor



These particulars are intended to give a fair and substantially correct overall description. Measurements have been taken at 1500mm skirting height. All dimensions are approximate. Bedroom measurements include the wardrobe if applicable. Room measurements include bay windows if applicable. Furniture layout is to give an indicative impression. Although all efforts have been made to ensure its accuracy at time of print dimensions, fixtures, fittings, finishes and specifications are subject to change without notice. The properties are sold unfurnished.