

# 6 Village Centre, £199,950\*

(Other charges apply)

RICHMOND  
VILLAGES

Part of Bupa



1



1



EPC - B



## 1 bedroom ground floor apartment

Richmond Villages Letcombe Regis are proud to present this one bedroom Assisted Living Apartment, situated on the ground floor of our main village centre. One of the main attractions of the property is the position it boasts, with a south aspect overlooking the communal bowling green. The apartment is also in close proximity of the main reception, which leads directly to the extensive communal facilities within the heart of the village.

### Specification

- A bright south-facing living room with double-glazed window offering views of bowling green, complimented by a feature fireplace.
- Modern fitted kitchenette with fitted wall and base units, under-cupboard lighting, and integrated fridge with freezer compartment.
- A spacious bedroom with double-glazed window and beautiful views.
- Shower room with walk-in shower, Corian shelf and white fitted suite.
- Entrance hall with a storage cupboard offering space for belongings.
- TV and satellite points\*.
- Beautifully maintained communal gardens with nearby bowling green, nature reserve, and private allotments.

\*Satellite subscription not included.

Important Notice: These particulars are intended to give a fair and substantially correct overall description. All dimensions are approximate. The properties are sold unfurnished. Properties are sold on a 125 year lease and this property has 110 years remaining.



01235 773970

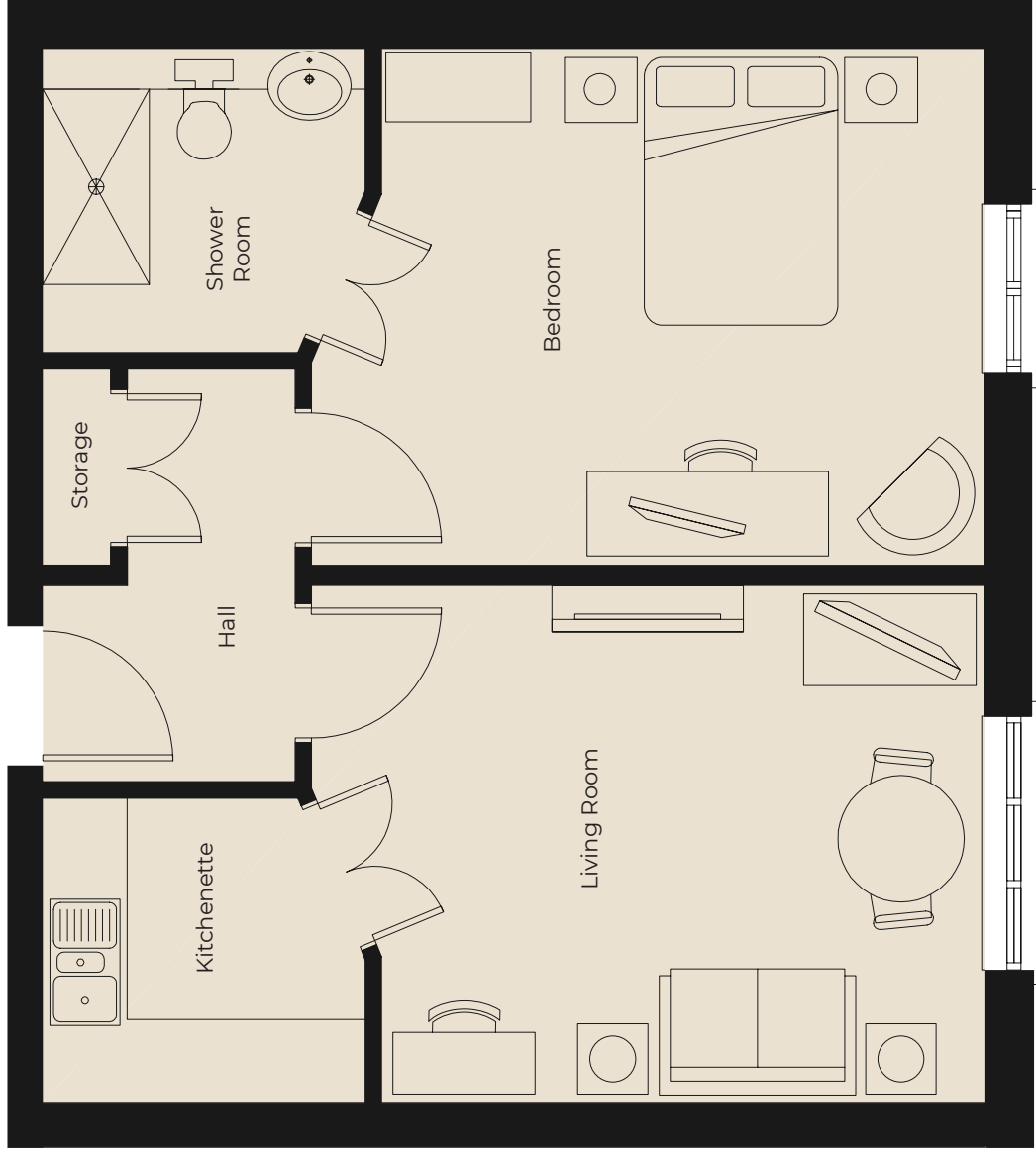
letcomberegis@richmond-villages.com

Richmond Villages Letcombe Regis,  
South Street, Letcombe Regis, Oxfordshire OX12 9RG

# 6 Village Centre

<b>Kitchenette</b>
2300mm x 2180mm
7'7" x 7'2"
<b>Living Room</b>
4800mm x 3698mm
15'9" x 12'2"
<b>Bedroom</b>
4800mm x 3697mm
15'9" x 12'2"
<b>En Suite Shower Room</b>
2300mm x 2180mm
7'7" x 7'2"

Ground Floor



These particulars are intended to give a fair and substantially correct overall description. Measurements have been taken at 1500mm skelling height. All dimensions are approximate. Bedroom measurements include the wardrobe if applicable. Room measurements include bay windows if applicable. Furniture layout is to give an indicative impression. Although all efforts have been made to ensure its accuracy at time of print dimensions, fixtures, fittings, finishes and specifications are subject to change without notice. The properties are sold unfurnished.

