

Apartment 32, £360,000

(Other charges apply)

RICHMOND
VILLAGES

Part of Bupa

SF

1



1



EPC - B



1 bedroom second floor apartment

A beautifully appointed one-bedroom apartment located on the second floor. The apartment features large patio doors opening onto a private balcony, offering stunning views of the communal gardens and surrounding woodlands. Residents enjoy full access to the village's exceptional facilities, including a welcoming reception, restaurant, bar and coffee lounge, wellness spa and multiple outdoor terraces.

Specification

- A bright and inviting open-plan living/dining space, perfect for relaxing and entertaining. The room benefits from double-glazed doors leading to the balcony, a feature fireplace with elegant surround.
- The practical fitted kitchenette includes base units, stainless steel sink and drainer, work surfaces, microwave and fridge freezer.
- A generously sized main bedroom, designed for comfort, with ample space for furnishings.
- Stylish shower room featuring a walk-in shower, WC and wash basin set within a fully fitted vanity unit with under-sink storage.
- TV and satellite points*.
- Well stocked flower borders and lawns maintained by the Village Gardeners.
- Allocated parking space for one car.



*Satellite subscription not included.

Important Notice: These particulars are intended to give a fair and substantially correct overall description. Other fees and charges apply, please contact the Village Advisers for further details. Properties are sold on a 125-year lease, this property has 120 years remaining.

01242 474 333

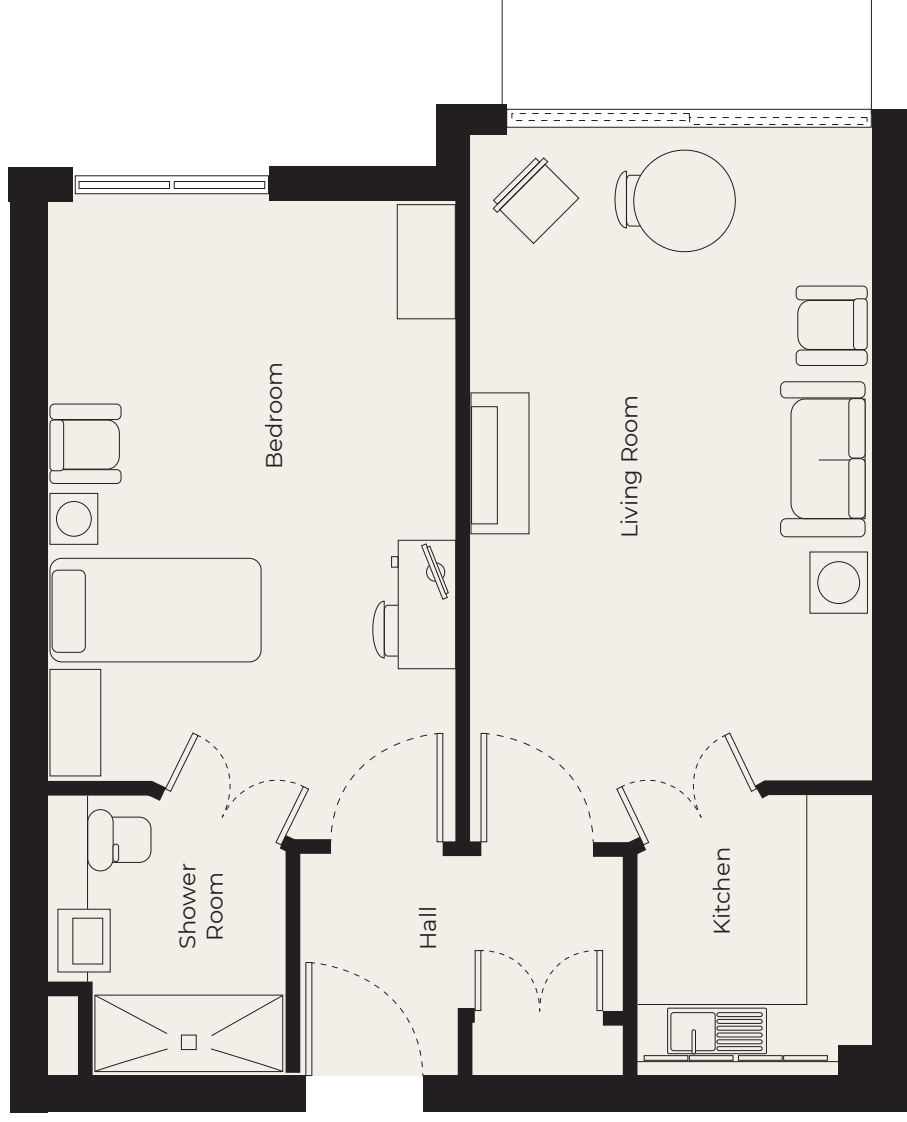
cheltenham@richmond-villages.com

Richmond Villages Cheltenham,
Hatherley Lane, Cheltenham, Gloucestershire GL51 6PN

Apartment 32

Second floor | 58.87m² – 634ft²

- Kitchenette**
2500mm x 2120mm
8'2" x 6'11"
- Living Room**
5710mm x 3640mm
18'9" x 11'11"
- Bedroom**
6300mm x 3600mm
20'8" x 11'9"
- Shower Room**
2500mm x 2120mm
8'2" x 6'11"
- Balcony**
3750mm x 1800mm
12'3" x 5'9"



These particulars are intended to give a fair and substantially correct overall description.

Measurements have been taken at 1500mm skilling height.

All dimensions are approximate. Bedroom measurements include the wardrobe if applicable. Room measurements include bay windows if applicable.

Furniture layout is to give an indicative impression. Although all efforts have been made to ensure its accuracy at time of print dimensions, fixtures, fittings, finishes and specifications are subject to change without notice.

The properties are sold unfurnished.

