

31 Village Centre, £235,000

(Other charges apply)

RICHMOND
VILLAGES

Part of Bupa



1



1



EPC - B



1 bedroom first floor apartment

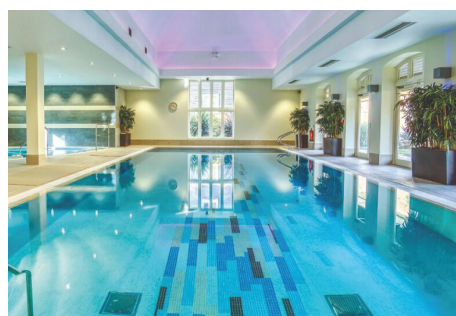
Set within the tranquil surroundings of Richmond Villages Letcombe Regis, this spacious one-bedroom Assisted Living Apartment offers stunning south-west views over the Letcombe Valley Nature Reserve and lake. Thoughtfully designed with comfort and convenience in mind, the property features a bright sitting room, modern kitchenette, large bedroom with en suite wet room, and access to beautifully maintained communal gardens

Specification

- A bright south-west facing living room with double-glazed windows that provide views of the beautiful nature reserve and lake.
- Modern fitted kitchenette with a range of fully fitted wall and base units with under cupboard lighting, integrated fridge with freezer compartment.
- Master bedroom with south-west facing aspect.
- Shower room with walk-in shower and fully fitted suite.
- Entrance hall with storage cupboards.
- TV and satellite points*.
- Beautifully Maintained Grounds with access to bowling green, village centre, Lodge café, shop, and private allotments
- Peaceful Location overlooking Letcombe Valley Nature Reserve
- Allocated parking space for one car.

*Satellite subscription not included.

Important Notice: These particulars are intended to give a fair and substantially correct overall description. Other fees and charges apply, please contact the Village Advisers for further details. Properties are sold on a 125 year lease and this property has 110 years remaining.



01235 773970

letcomberegis@richmond-villages.com

Richmond Villages Letcombe Regis,
South Street, Letcombe Regis, Oxfordshire OX12 9RG

31 Village Centre

First Floor

Kitchen

2300mm x 2180mm

7'7" x 7'2"

Living Room

6113mm x 3698mm

20'1" x 12'2"

Bedroom

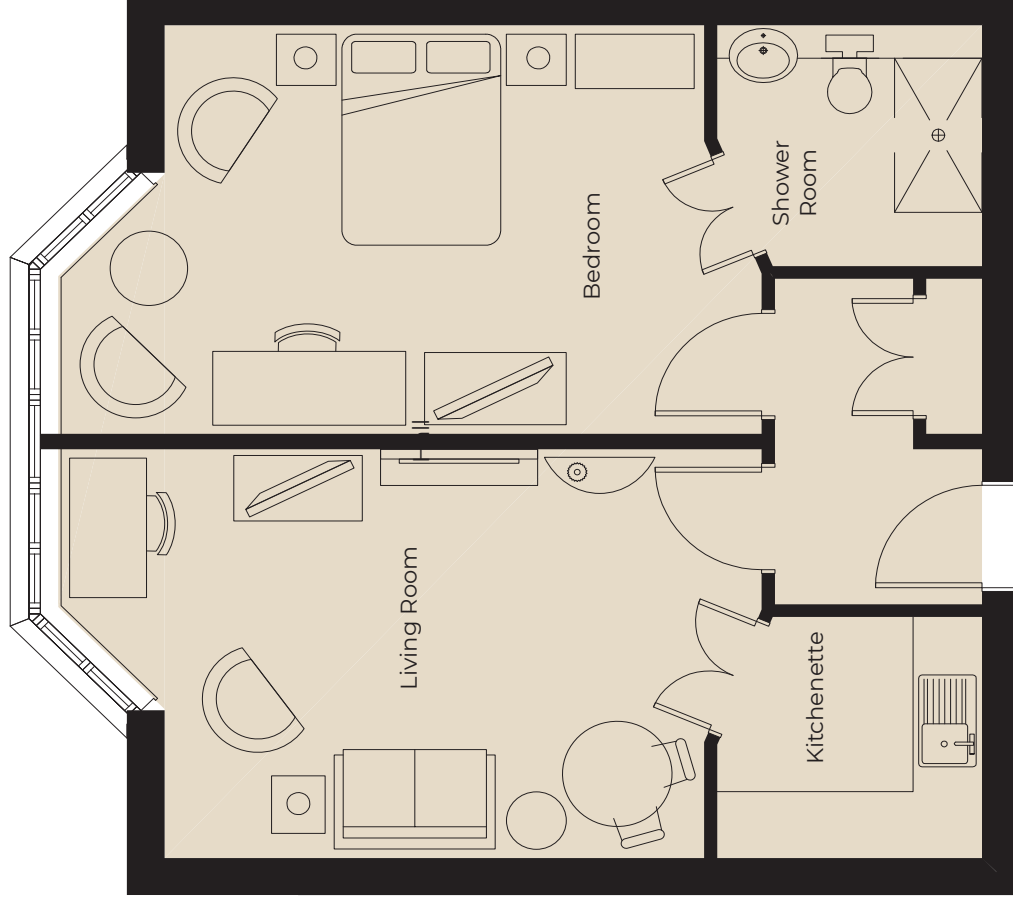
6113mm x 3698mm

20'1" x 12'2"

Shower Room

2300mm x 2180mm

7'7" x 7'2"



These particulars are intended to give a fair and substantially correct overall description.

Measurements have been taken at 1500mm skelling height.

All dimensions are approximate. Bedroom measurements include the wardrobe if applicable. Room measurements include bay windows if applicable.

Furniture layout is to give an indicative impression. Although all efforts have been made to ensure its accuracy at time of print dimensions, fixtures, fittings, finishes and specifications are subject to change without notice.

The properties are sold unfurnished.

