

No. 36 Village Centre, £1,233 per month* RICHMOND VILLAGES

(Other charges apply)

Part of Bupa

SF

1



1



EPC - C



1 bedroom, second floor, assisted living apartment

A delightful 1 bedroom second floor apartment enjoying a south facing aspect. The accommodation comprises entrance hall, double sized bedroom with ensuite walk in shower, living room and fitted kitchenette. The property is let on an unfurnished basis with an initial tenancy term of 6 months.

Specification

- Spacious and bright living room.
- Modern fitted kitchenette with base and eye level units and fitted fridge.
- Large main bedroom, with en-suite shower room.
- En-suite shower room with walk-in shower and fully fitted white suite.
- TV and satellite points*.
- Well stocked flower borders and lawns maintained by the Village Gardeners.
- Allocated parking space for one car.



*Satellite subscription not included.

Important Notice: These particulars are intended to give a fair and substantially correct overall description. Other fees and charges apply, please contact the Village Advisers for further details.

01332 794300

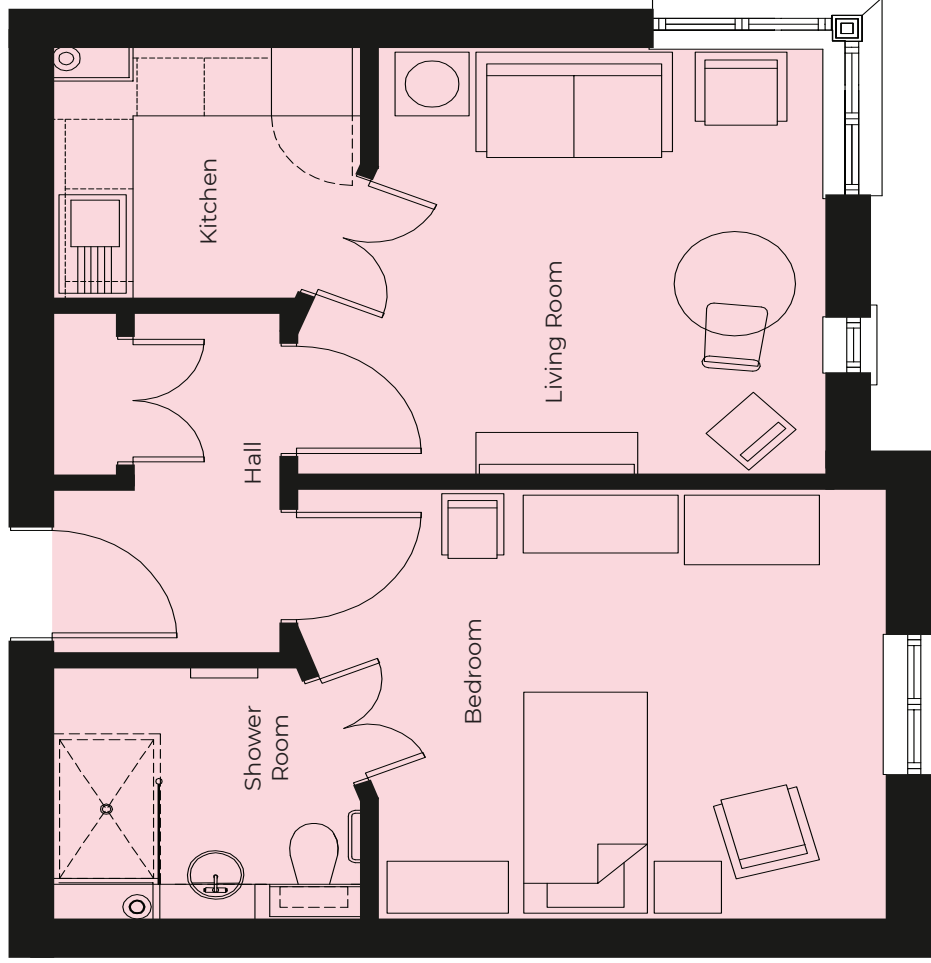
astonontrent@richmond-villages.com

Richmond Villages Aston-on-Trent,
Richmond Drive, Aston-on-Trent, Derbyshire DE72 2EA

36 Village Centre

Second Floor | 44.99m² – 484.26ft²

- Kitchen**
2300mm x 2180mm
7'7" x 7'2"
- Living Room**
3935mm x 3710mm
12'11" x 12'2"
- Bedroom**
4385mm x 3710mm
14'5" x 12'2"
- Shower Room**
2300mm x 2180mm
7'7" x 7'2"



These particulars are intended to give a fair and substantially correct overall description.

Measurements have been taken at 1500mm skirting height.

All dimensions are approximate. Bedroom measurements include the wardrobe if applicable. Room measurements include bay windows if applicable.

Furniture layout is to give an indicative impression. Although all efforts have been made to ensure its accuracy at time of print dimensions, fixtures, fittings, finishes and

specifications are subject to change without notice.

The properties are sold unfurnished.

