

41 Tuckers Court, £550,000

(Other charges apply)

RICHMOND
VILLAGES

Part of Bupa



2



2



EPC - B



2 bedroom second floor apartment

We are delighted to offer this spacious 2 bedroom, 2 bathroom property which benefits from open plan living and large storage options.

Specification

- You enter the apartment into a spacious hallway, which provides access to all rooms and a utility and storage cupboard.
- The well-equipped fitted kitchen has wall and base units, with under cupboard lighting, stainless steel sink and drainer, and integrated fridge and freezer, ceramic hob, double oven and dishwasher.
- The open plan living room continues with a breakfast bar and dining area. An electric fire with Bath stone-effect surround ties the areas together and gives a great focal point.
- The main bedroom is again spacious with floor to ceiling fitted wardrobes and features a modern en-suite shower room.
- The modern shower room has a WC and wash hand basin set within a fully fitted vanity unit. Heated towel rail and downlights to ceiling.
- The second bedroom is also generously sized, with further storage space.
- The modern bathroom has a bath, with a shower, wash hand basin set within a fully fitted vanity unit. Heated towel rail and downlights to ceiling.
- TV and satellite points*.
- Well stocked flower borders and lawns maintained by the Village Gardeners.
- Allocated parking space for one car.

*Satellite subscription not included.

Important Notice: These particulars are intended to give a fair and substantially correct overall description. Other fees and charges apply, please contact the Village Advisers for further details. Properties are sold on a 125 year lease and this property has 115 years remaining.



01993 894 000

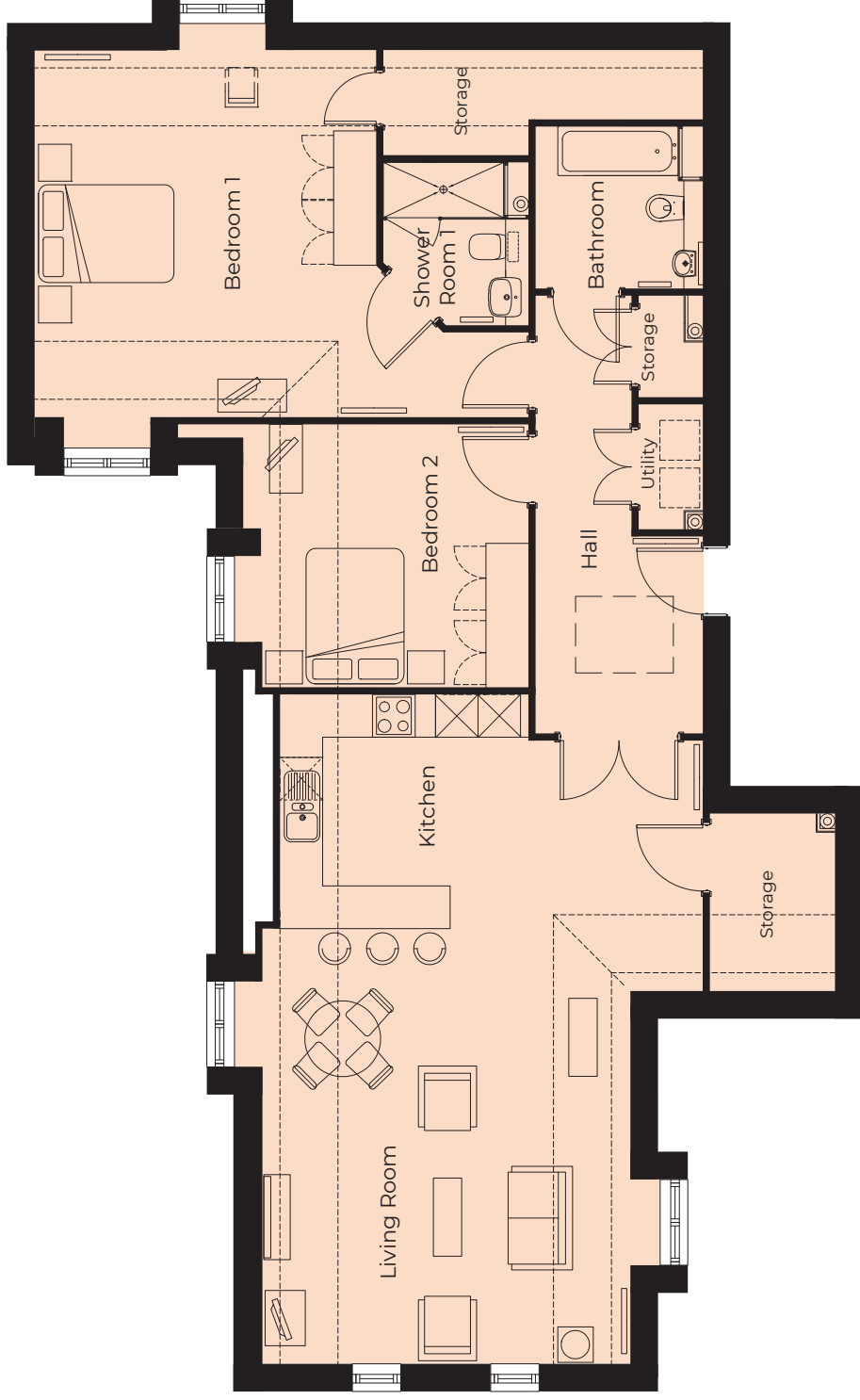
witney@richmond-villages.com

Richmond Villages Witney,
Coral Springs Way, Witney, Oxfordshire OX28 5DG

41 Tuckers Court

Second Floor | 125.34m² – 1349.1ft²*

- Kitchen**
3500mm x 3300mm
11'6" x 10'10"
- Living Room**
6160mm x 4675mm
20'2" x 15'4"
- Bedroom 1**
4812mm x 4675mm
15'9" x 15'4"
- Shower Room**
2300mm x 2050mm
7'7" x 6'9"
- Bedroom 2**
3711mm x 3506mm
12'2" x 11'6"
- Bathroom**
2356mm x 2300mm
7'9" x 7'7"



These particulars are intended to give a fair and substantially correct overall description. Measurements have been taken at 1500mm skirting height. All dimensions are approximate. Bedroom measurements include the wardrobe if applicable. Room measurements include bay windows if applicable. Furniture layout is to give an indicative impression. Although all efforts have been made to ensure its accuracy at time of print dimensions, fixtures, fittings, finishes and specifications are subject to change without notice. The properties are sold unfurnished.

