

# Apartment 1, £199,950

(Other charges apply)

RICHMOND  
VILLAGES

Part of Bupa



1



1



EPC - C



## 1 bedroom first floor apartment

Assisted living apartment one is a beautiful 1-bedroom property, with stunning views from both the lounge and bedroom across the bowling green patio to the green itself. Located in the main building, within easy access to all its facilities, apartment one has been tastefully decorated throughout.

### Specification

- The charming living room is well proportioned, providing a lovely space in which to entertain family or friends, with views across bowling green. Offering a double-glazed window and feature fireplace with an attractive surround.
- The kitchenette has wall and base units, sink and drainer, ample work surfaces and fridge.
- A light and airy bedroom, with a built-in wardrobe and views across the bowling green.
- An en-suite shower room, with a shower, shower seat, wc, washbasin and vanity unit.
- Central heating radiators in all rooms.
- Well stocked flower borders and lawns maintained by the Village Gardeners.
- The property is offered with an allocated parking space where applicable.



\*Satellite subscription not included.

Important Notice: These particulars are intended to give a fair and substantially correct overall description. Other fees and charges apply, please contact the Village Advisers for further details. Properties are sold on a 125 year lease and this property has 108 years remaining.

01270 629 080

nantwich@richmond-villages.com

Richmond Villages Nantwich,  
St Joseph's Way, Nantwich, Cheshire CW5 6LZ

# Apartment 1

First Floor | 341ft<sup>2</sup>

## Kitchen

1879mm x 1854mm

6'2" x 6'1"

## Living Room

4495mm x 3098mm

16'8" x 10'4"

## Bedroom

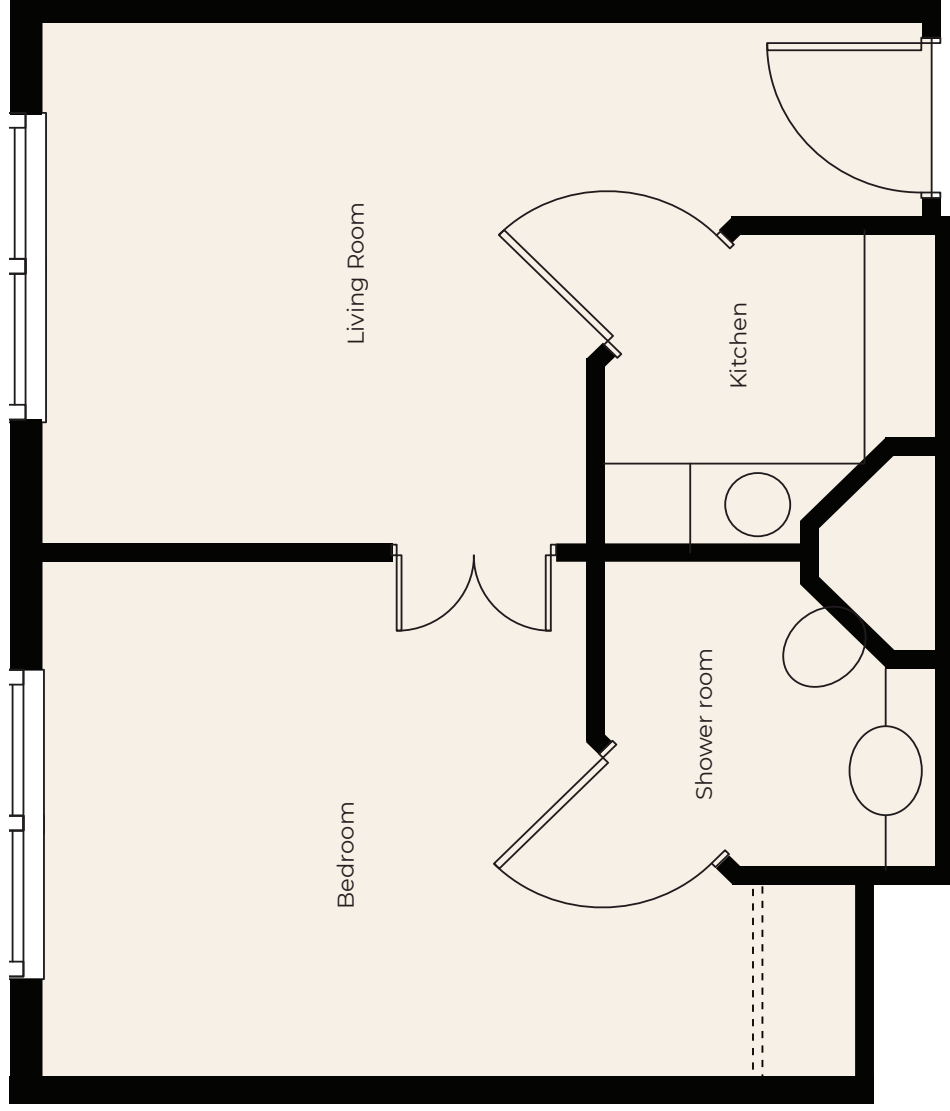
5080mm x 3149mm

14'9" x 10'2"

## Shower Room

1879mm x 1854mm

6'2" x 6'1"



These particulars are intended to give a fair and substantially correct overall description.

Measurements have been taken at 1500mm skirting height.

All dimensions are approximate. Bedroom measurements include the wardrobe if applicable. Room measurements include bay windows if applicable.

Furniture layout is to give an indicative impression. Although all efforts have been made to ensure its accuracy at time of print dimensions, fixtures, fittings, finishes and

specifications are subject to change without notice.

The properties are sold unfurnished.

