

3/5 Village Centre, £270,000

(Other charges apply)

RICHMOND
VILLAGES

Part of Bupa



1 bedroom apartment

Recently refurbished throughout, this beautiful one-bedroom assisted living apartment benefits from a Juliette balcony overlooking the green meadow. The accommodation features an entrance hall, living room, bedroom and en-suite shower room.

Specification

- Upon entering the apartment, you are welcomed into a hallway, which provides access to all rooms and a storage cupboard.
- The kitchenette features wall and base units with under cupboard lighting, stainless steel sink and drainer, and integrated fridge.
- The newly decorated living room has a beautiful Juliette balcony which provides stunning views of the Meadow. Further features include an electric fire with Bath stone-effect surround.
- The bedroom has been redecorated throughout to provide a clean, bright and light environment with views over the Meadow.
- Shower room features a WC, wash hand basin, mirror with down-light and a large built-in storage cupboard with glass front doors.
- TV and satellite points*.
- Well stocked flower borders and lawns maintained by the Village Gardeners.
- Allocated parking space for one car.

*Satellite subscription not included.

Important Notice: These particulars are intended to give a fair and substantially correct overall description. Other fees and charges apply, please contact the Village Advisers for further details. Properties are sold on a 125 year lease and this property has 106 years remaining.



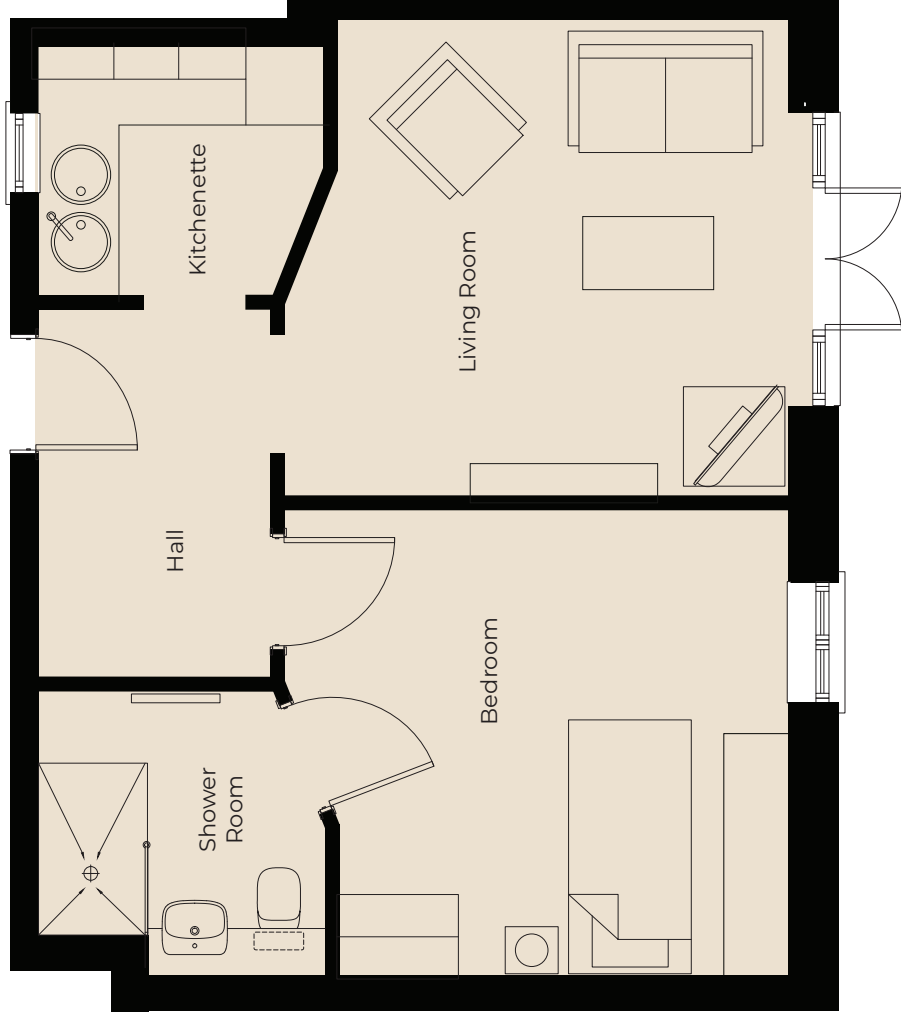
01452 810 203

painswick@richmond-villages.com

Richmond Villages Painswick,
Stroud Road, Painswick, Gloucestershire GL6 6UL

3/5 Village Centre

Kitchenette
2142mm x 1936mm 7' x 6'4"
Living Room
3781mm x 3653mm 12'4" x 11'11"
Bedroom
3784mm x 3546mm 12'4" x 11'7"
Shower Room
2142mm x 2164mm 7' x 7'1"



These particulars are intended to give a fair and substantially correct overall description.

Measurements have been taken at 1500mm skirting height.

All dimensions are approximate. Bedroom measurements include the wardrobe if applicable. Room measurements include bay windows if applicable.

Furniture layout is to give an indicative impression. Although all efforts have been made to ensure its accuracy at time of print dimensions, fixtures, fittings, finishes and specifications are subject to change without notice.

The properties are sold unfurnished.

