

# No. 18, £225,000

(Other charges apply)

RICHMOND  
VILLAGES

Part of Bupa



1



1



EPC - C



## 1 bedroom ground floor apartment

One bedroom, ground floor apartment with a South facing conservatory and located in the courtyard, which offers close proximity to the village centre with outdoor patio area, hair salon and therapy room, restaurant and reception.

### Specification

- Upon entering the apartment, you will be welcomed into an open hallway, which provides access to all rooms and storage for coats and shoes.
- The living room benefits from a bright and airy South facing conservatory with views across lawns and flowers borders.
- The kitchen has wall and base units, stainless steel sink and drainer, ample work surfaces, oven and hob, fridge freezer and washing machine.
- The main bedroom is a light and airy south facing bedroom with plenty of room for storage with built in wardrobes.
- A large shower room with full body dryer, WC and wash hand basin set within a fully modern fitted vanity unit.
- Allocated off road parking space for one car.
- Central heating radiators in all rooms. TV and satellite points\*.
- Well stocked flower borders and lawns maintained by the Village Gardeners.



\*Satellite subscription not included.

Important Notice: These particulars are intended to give a fair and substantially correct overall description. Other fees and charges apply, please contact the Village Advisers for further details. Properties are sold on a 125 year lease and this property has 106 years remaining.

01270 629 080

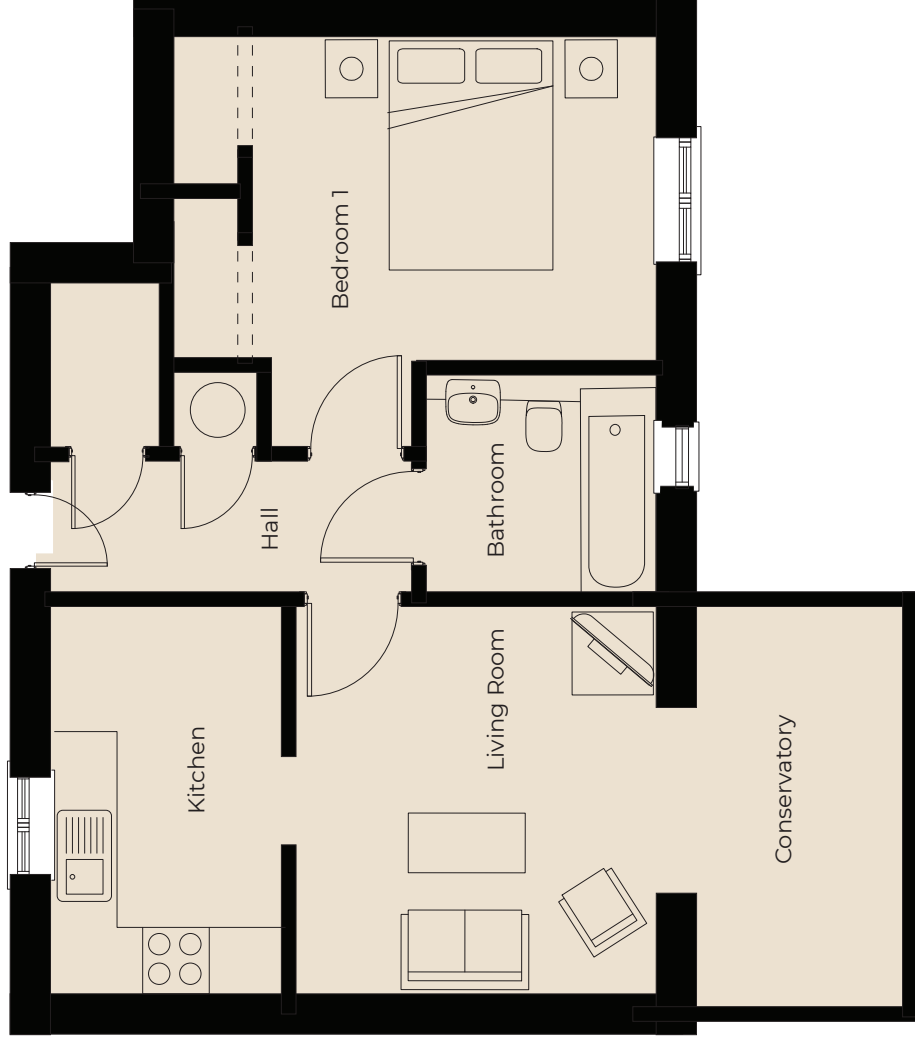
nantwich@richmond-villages.com

Richmond Villages Nantwich,  
St Joseph's Way, Nantwich, Cheshire CW5 6LZ

# No. 18

Ground Floor | 549.73ft<sup>2</sup>

- Kitchen  
3505mm x 2108mm  
11'6" x 6'11"
- Living Room  
3505mm x 3276mm  
11'6" x 10'9"
- Bedroom  
2946mm x 3505mm  
9'8" x 11'6"
- Bathroom  
1981mm x 2108mm  
6'6" x 6'11"
- Conservatory  
2500mm x 3500mm  
8'2" x 11'6"



These particulars are intended to give a fair and substantially correct overall description. Measurements have been taken at 1500mm skirting height. All dimensions are approximate. Bedroom measurements include the wardrobe if applicable. Room measurements include bay windows if applicable. Furniture layout is to give an indicative impression. Although all efforts have been made to ensure its accuracy at time of print dimensions, fixtures, fittings, finishes and specifications are subject to change without notice. The properties are sold unfurnished.

