

8 Priest Meadows, £525,000

(Other charges apply)

RICHMOND
VILLAGES

Part of Bupa



2



2



EPC - B



2 bedroom ground floor apartment

One of the largest ground floor apartments available at Richmond Villages, Aston-on-Trent. This property has been newly decorated and carpeted and benefits from stunning south facing views across open fields. The property is available with no upward chain and must be viewed to be appreciated.

Specification

- The spacious living room features French doors leading to a private patio which enjoys stunning south facing open field views.
- The contemporary kitchen adjoins the living space and has been designed to offer a range of eye and base level units with granite worktops.
- The main bedroom is a light and airy space with plenty of room for storage in the built in wardrobes and features a modern walk-in shower room.
- Second bedroom with en-suite bathroom.
- Guest shower room with walk-in shower and fully fitted white suite.
- Spacious hallway which provides access to all rooms and plenty of storage for your belongings.
- Central heating radiators in all rooms. TV and satellite points*.
- Well stocked flower borders and lawns maintained by the Village Gardeners.
- Allocated parking space for one car.



*Satellite subscription not included.

Important Notice: These particulars are intended to give a fair and substantially correct overall description. Other fees and charges apply, please contact the Village Advisers for further details. Properties are sold on a 125 year lease and this property has 117 years remaining.

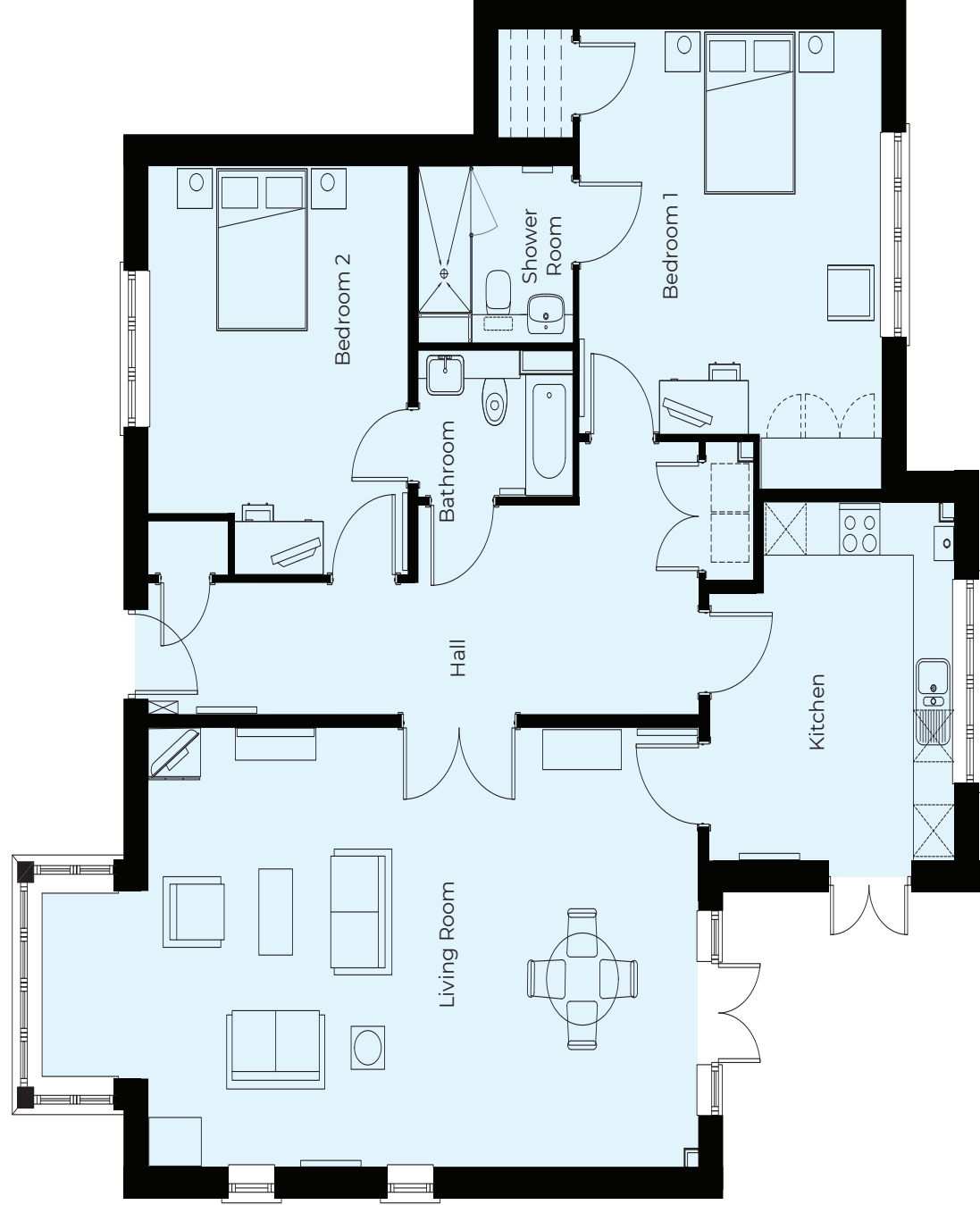
01332 794300

astonontrent@richmond-villages.com

Richmond Villages Aston-on-Trent,
Richmond Drive, Aston-on-Trent, Derbyshire DE72 2EA

8 Priest Meadows

Ground Floor | 133.8m² – 1440ft²



- Kitchen**
4139mm x 3638mm
13'6" x 11'9"
- Living Room**
9807mm x 5099mm
32'6" x 16'7"
- Bedroom 1**
5346mm x 4499mm
17'5" x 14'8"
- Shower Room**
2300mm x 2050mm
7'5" x 6'7"
- Bedroom 2**
4744mm x 3864mm
15'7" x 12'7"
- Bathroom**
2300mm x 1700mm
7'5" x 5'6"

These particulars are intended to give a fair and substantially correct overall description. Measurements have been taken at 1500mm skirting height. All dimensions are approximate. Bedroom measurements include the wardrobe if applicable. Room measurements include bay windows if applicable. Furniture layout is to give an indicative impression. Although all efforts have been made to ensure its accuracy at time of print dimensions, fixtures, fittings, finishes and specifications are subject to change without notice. The properties are sold unfurnished.

