

# Apartment 12, £209,950

(Other charges apply)

RICHMOND  
VILLAGES

Part of Bupa



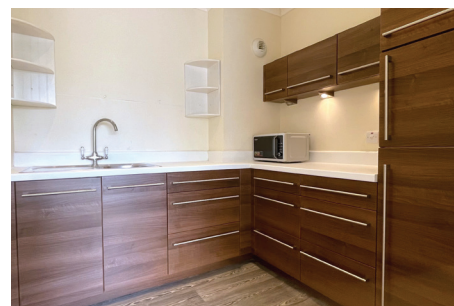
1



1



EPC - B



## 1 bedroom first floor apartment

A spacious first floor assisted living apartment with bay window overlooking the gardens. Apartment comprises entrance hall, living / dining room, kitchen, one double bedroom benefiting from its own en-suite bathroom.

### Specification

- The welcoming living / dining room is well proportioned with double glazed box bay window with views across the village gardens.
- The well-equipped fitted kitchenette has wall and base units with under cupboard lighting.
- Spacious double bedroom with double glazed window.
- En-suite bathroom with an assisted access bath with white suite comprising low level WC, and wash hand basinset within a fully fitted vanity unit, fitted wall mirror, heated towel rail and bathroom cabinet.
- Entrance hall with storage cupboards and airing cupboard.
- TV and satellite points\*.
- Well stocked flower borders and lawns maintained by the Village Gardeners.
- Allocated parking space for one car.

\*Satellite subscription not included.

Important Notice: These particulars are intended to give a fair and substantially correct overall description. Other fees and charges apply, please contact the Village Advisers for further details. Properties are sold on a 125 year lease and this property has 107 years remaining.

01604 432 600

northampton@richmond-villages.com

Richmond Villages Northampton,  
Bridge Meadow Way, Grange Park, Northampton NN4 5EB

# Apartment 12

## First Floor

### Kitchen

7'6" x 7'1"

### Living Room

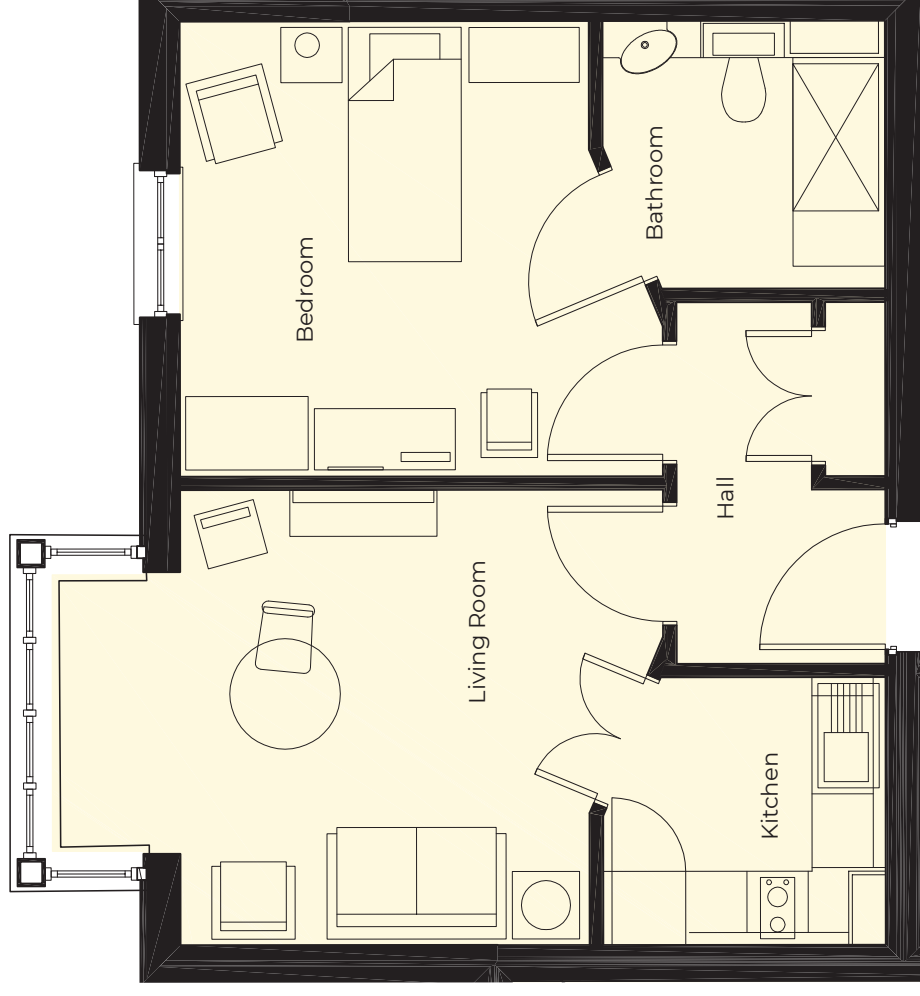
14'9" (max into bay) x 12'2"

### Bedroom

12'11" max x 12'2"

### Bathroom

7'6" x 7'1"



These particulars are intended to give a fair and substantially correct overall description.

Measurements have been taken at 1500mm skirting height.

All dimensions are approximate. Bedroom measurements include the wardrobe if applicable. Room measurements include bay windows if applicable.

Furniture layout is to give an indicative impression. Although all efforts have been made to ensure its accuracy at time of print dimensions, fixtures, fittings, finishes and specifications are subject to change without notice.

The properties are sold unfurnished.