

1 Ashfields Grove, £499,000

(Other charges apply)

RICHMOND
VILLAGES

Part of Bupa



2



2



EPC - B



2 bedroom ground floor apartment

A stunning and particularly spacious, ground floor, two bedroom apartment occupying a prime position and benefiting from a walled south-facing patio, large kitchen diner and living accommodation covering 1411 sq ft.

Specification

- A spacious living room with double glazed bay window to patio and double glazed window overlooking the woodland. Modern remote controlled electric fire and surround. Double doors leading to the spacious dining kitchen.
- Modern fitted kitchen with granite worktops and peninsular, ample kitchen units, under cupboard lighting and built in Neff appliances including electric oven and hob, fridge/freezer and dishwasher.
- The main bedroom is a spacious double bedroom with a double glazed bay window and French doors leading to patio and doors leading to dressing room and to an en-suite shower room.
- En-suite shower room with walk-in shower and fully fitted white suite.
- The second bedroom is bright and airy with a double glazed window.
- Bathroom with shower over bath and fully fitted white suite.
- Central heating radiators in all rooms. TV and satellite points*.
- Well stocked flower borders and lawns maintained by the Village Gardeners.
- Allocated parking space for one car.



*Satellite subscription not included.

Important Notice: These particulars are intended to give a fair and substantially correct overall description. Other fees and charges apply, please contact the Village Advisers for further details. Properties are sold on a 125 year lease and this property has 118 years remaining.

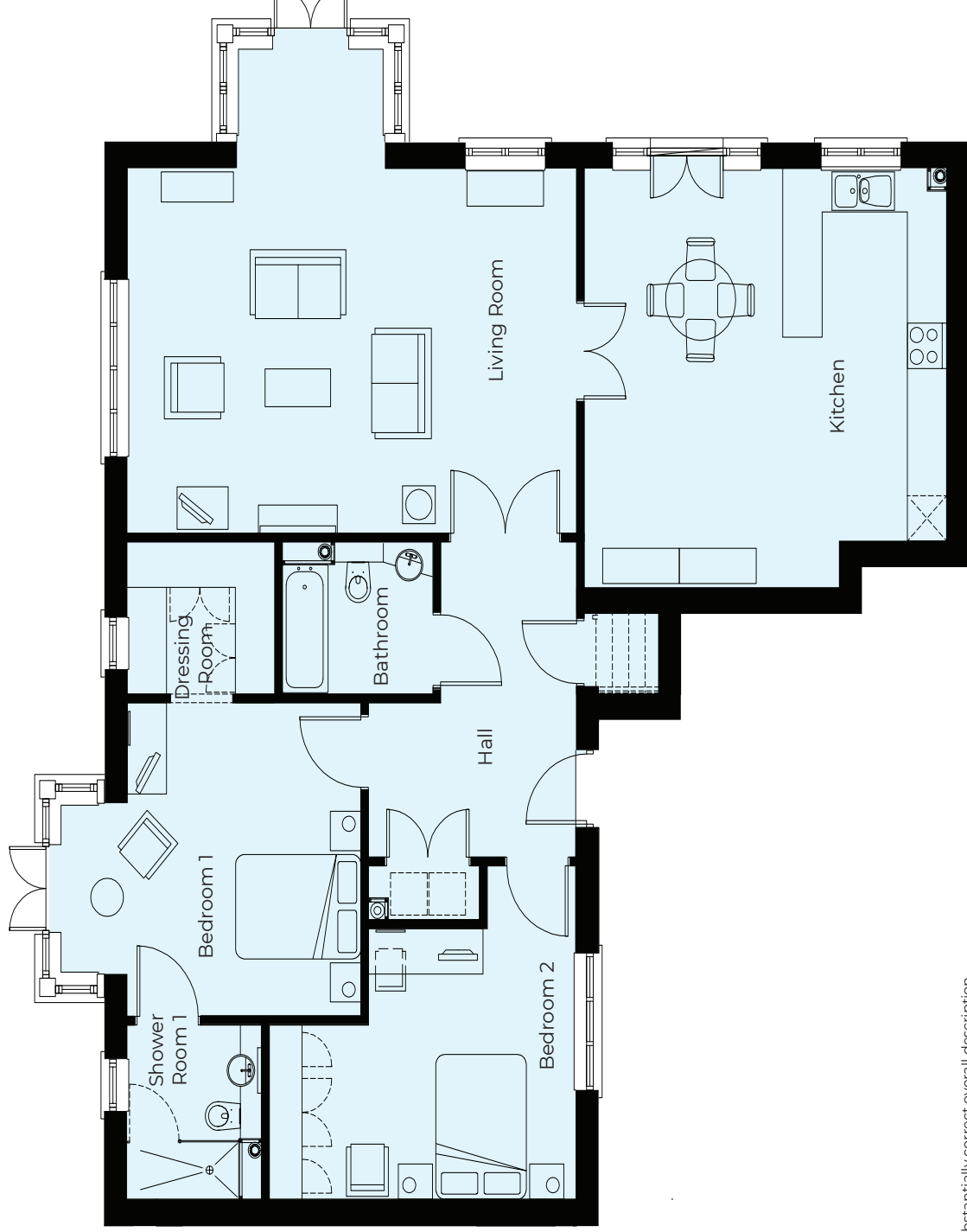
01332 794300

astonontrent@richmond-villages.com

Richmond Villages Aston-on-Trent,
Richmond Drive, Aston-on-Trent, Derbyshire DE72 2EA

1 Ashfields Grove

Ground Floor | 131.1m² – 1411ft²



Kitchen

5547mm x 5497mm

18'2" x 18'0"

Living Room

6854mm x 6360mm

22'6" x 20'10"

Bedroom 1

4575mm x 4107mm

15'0" x 13'6"

Bathroom

2300mm x 2010mm

7'7" x 6'7"

Bedroom 2

4677mm x 3574mm

15'4" x 11'9"

Shower Room

2300mm x 2050mm

7'7" x 6'9"

These particulars are intended to give a fair and substantially correct overall description.

Measurements have been taken at 1500mm skirting height.

All dimensions are approximate. Bedroom measurements include the wardrobe if applicable. Room measurements include bay windows if applicable.

Furniture layout is to give an indicative impression. Although all efforts have been made to ensure its accuracy at time of print dimensions, fixtures, fittings, finishes and

specifications are subject to change without notice.

The properties are sold unfurnished.

