

# 36 Village Centre – £345,000

RICHMOND  
VILLAGES

Part of Bupa

(Other charges apply)



1



1



EPC - C

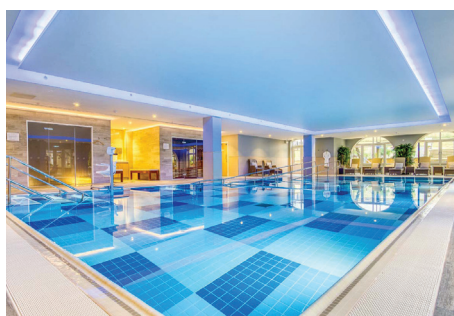
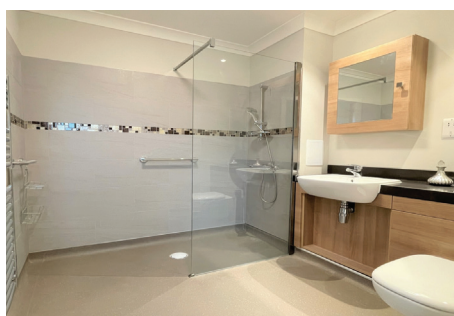


## 1 bedroom assisted living apartment

Richmond Villages are pleased to offer for resale this one-bedroom assisted living apartment. This apartment is in a desirable location within the retirement village with easy access to the restaurant, bar, reception, art studio, library, wellness spa, outdoor seating areas, bowling green, café and shop.

### Specification

- South-west facing living room with balcony and double-glazed window. Remote-controlled electric fire and Bath stone effect surround
- Modern fitted kitchenette with under cupboard lighting and built-in fridge
- Main bedroom with double glazed window
- En-suite shower room with walk-in shower and fitted sanitary ware
- Entrance hall with storage cupboard
- Central heating radiators in all rooms
- TV and satellite points
- Allocated parking space for one car if required
- Outside features laid lawns and well stocked flower borders maintained by the Village Gardeners



\*Satellite subscription not included.

Important Notice: These particulars are intended to give a fair and substantially correct overall description. Other fees and charges apply, please contact the Village Advisers for further details. Properties are sold on a 125 year lease and this property has 116 years remaining.

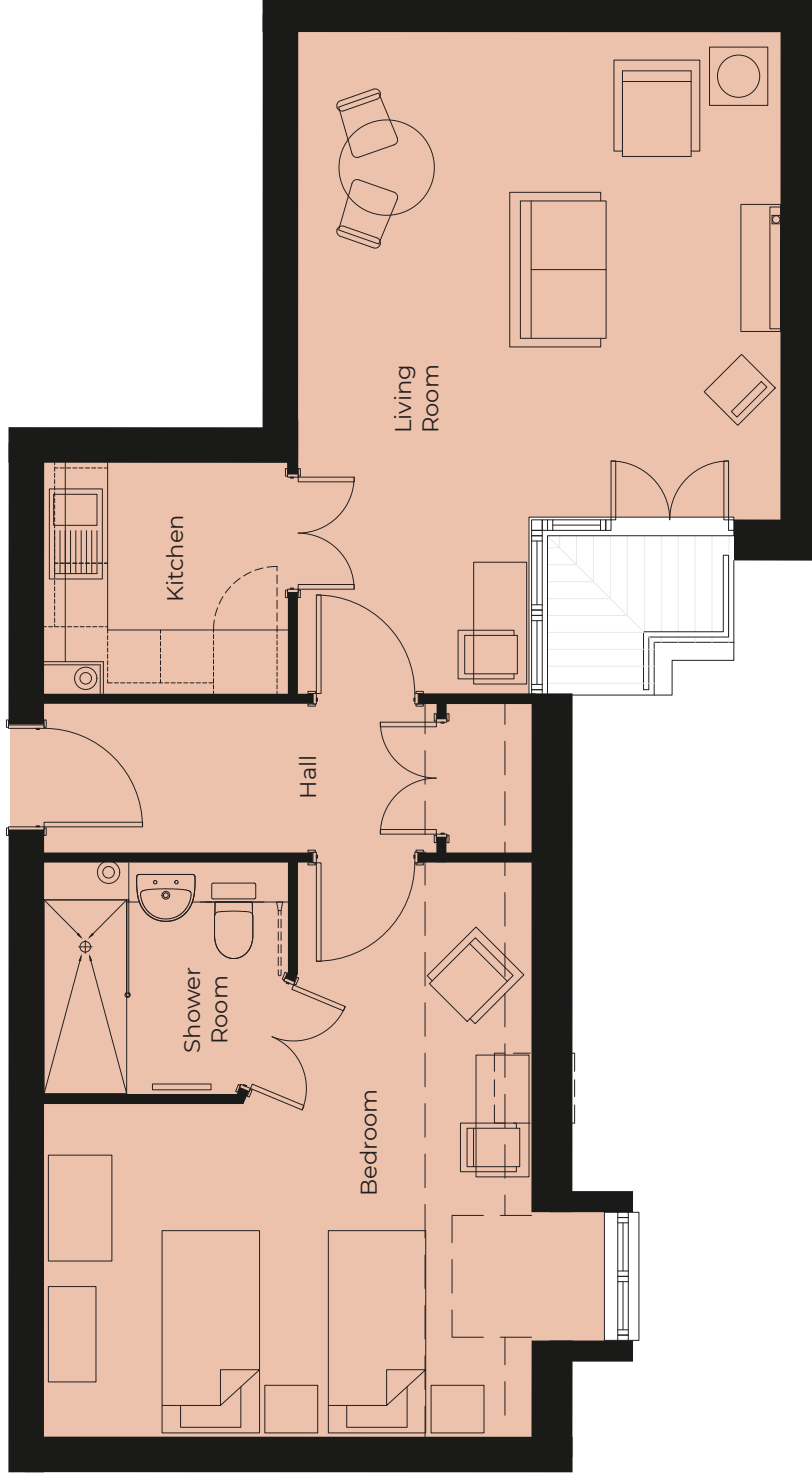
01993 894000

witney@richmond-villages.com

Richmond Villages Witney,  
Coral Springs Way, Witney, Oxfordshire OX28 5DG

# 36 Village Centre

Second Floor | 61.3m<sup>2</sup> – 659ft<sup>2</sup>



- Kitchenette**  
2300mm x 2180mm  
7'6" x 7'2"
- Living Room**  
6245mm x 4555mm (max)  
20'6" x 15'0"
- Bedroom**  
5420mm x 4353mm\* (max)  
17'9" x 14'3"
- Shower Room**  
2345mm x 2210mm  
7'6" x 7'2"

These particulars are intended to give a fair and substantially correct overall description.

Measurements have been taken at 1500mm skirting height.

All dimensions are approximate. Bedroom measurements include the wardrobe if applicable. Room measurements include bay windows if applicable.

Furniture layout is to give an indicative impression. Although all efforts have been made to ensure its accuracy at time of print dimensions, fixtures, fittings, finishes and specifications are subject to change without notice.

The properties are sold unfurnished.

