

29 Village Centre, £299,500

(Other charges apply)

RICHMOND
VILLAGES

Part of Bupa



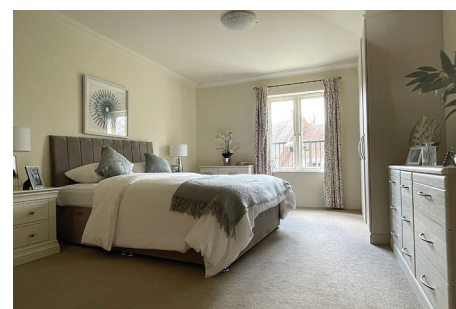
1



1



EPC - C



1 bedroom first floor apartment

This well-proportioned one-bedroom Assisted Living Apartment offers stunning views of the Letcombe Valley Nature Reserve and features a large west-facing balcony. The balcony provides a spacious and tranquil environment for relaxation and enjoyment. If you're lucky, you might even spot the electric blue colours of a kingfisher. If relaxation isn't your preference, don't worry! We have a packed schedule of activities, ranging from fitness classes with Quentin to craft sessions with Pam.

Specification

- A bright living room with French doors leading to a large private balcony spanning the entire width of the property, with views of the beautiful nature reserve. Feature fireplace with Bath stone effect surround.
- Kitchenette with range of wall and base units and integrated fridge with freezer compartment.
- Master bedroom with views of the nature reserve.
- Shower room with walk-in shower and fully fitted suite.
- Entrance hall with storage cupboard.
- TV and satellite points*.
- Outside, the property benefits from a large west facing balcony, set with the beautifully maintained grounds, carefully tended to by our village gardeners. Close to the village you will find the surrounding the facilities, including a nearby nature reserve, as well as private allotments which residents are welcomed to enjoy.

*Satellite subscription not included.

Important Notice: These particulars are intended to give a fair and substantially correct overall description. Other fees and charges apply, please contact the Village Advisers for further details. Properties are sold on a 125 year lease and this property has 110 years remaining.



01235 773970

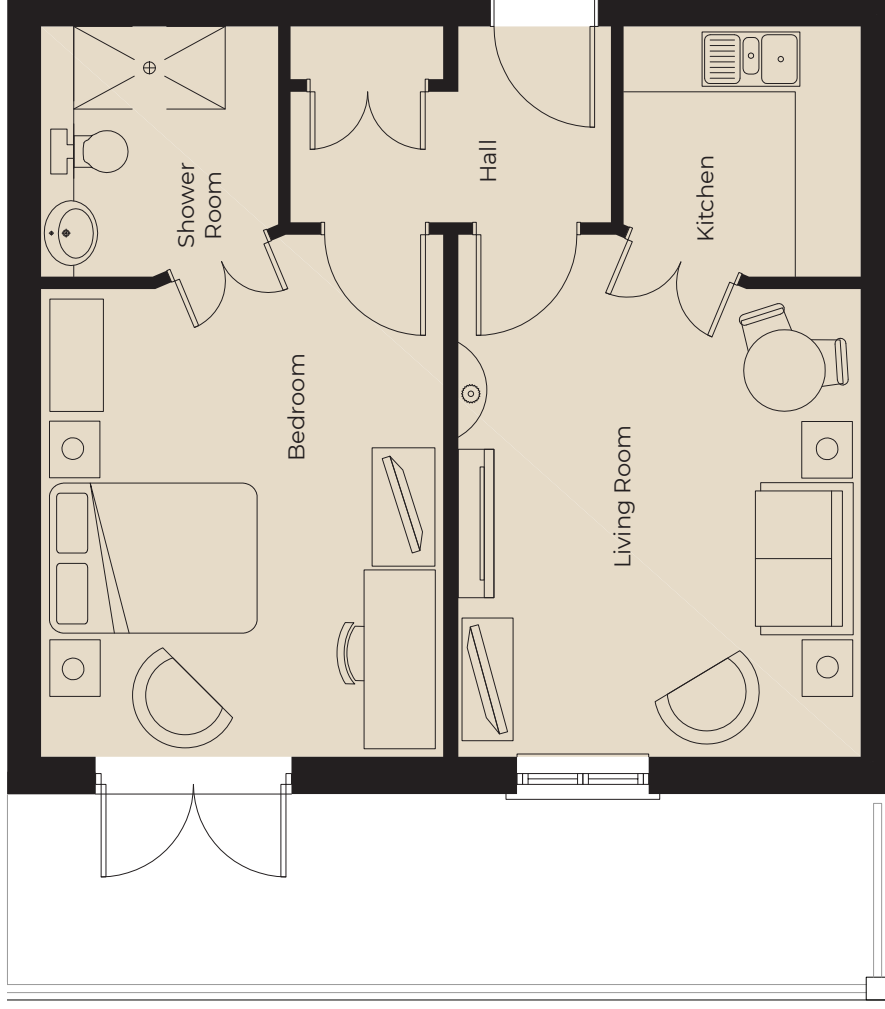
letcomberegis@richmond-villages.com

Richmond Villages Letcombe Regis,
South Street, Letcombe Regis, Oxfordshire OX12 9RG

29 Village Centre

First Floor | 545ft²

- Kitchen**
2300mm x 2180mm
7'7" x 7'2"
- Living Room**
4800mm x 3698mm
15'9" x 12'2"
- Bedroom**
4800mm x 3698mm
15'9" x 12'2"
- Shower Room**
2300mm x 2180mm
7'7" x 7'2"



These particulars are intended to give a fair and substantially correct overall description. Measurements have been taken at 1500mm skelling height. All dimensions are approximate. Bedroom measurements include the wardrobe if applicable. Room measurements include bay windows if applicable. Furniture layout is to give an indicative impression. Although all efforts have been made to ensure its accuracy at time of print dimensions, fixtures, fittings, finishes and specifications are subject to change without notice. The properties are sold unfurnished.

