

# 79 Mill Stream Mews, £700,000

(Other charges apply)

RICHMOND  
VILLAGES

Part of Bupa



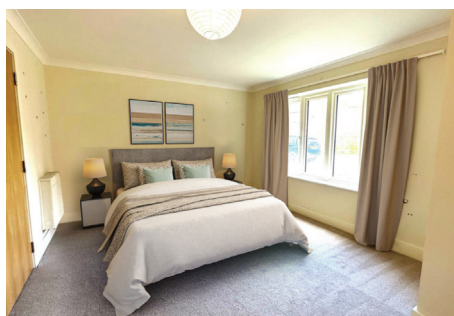
2



2



EPC - B



## 2 bedroom ground floor apartment

Nestled at the end of the mews, this impressive two-bedroom ground floor apartment offers a prime location that you won't want to miss. Featuring a generous south-facing patio and a stylish walk-in wardrobe, this property stands out as one of the finest choices available on the market. Don't let this opportunity pass you by!

### Specification

- Large two-bedroom, ground floor retirement apartment
- Ensuites to both bedrooms
- The contemporary kitchen adjoins the dining space and has been superbly designed to offer a range of eye and base level units.
- The living room is large and flooded with natural light
- South facing patio area
- Outstanding on-site facilities including Wellness Spa
- Centred around community & wellbeing
- Beautifully Manicured Gardens & Bowling Green
- Designated parking is available for one car, subject to a parking license.
- Desirable location within nature reserve
- No onward chain
- Council Tax Band D
- Dual aspect

\*Satellite subscription not included.

Important Notice: These particulars are intended to give a fair and substantially correct overall description. **Other fees and charges apply**, please contact the Village Advisers for further details. Properties are sold on a 125 year lease and this property has 116 years remaining.



01235 773970

letcomberegis@richmond-villages.com

Richmond Villages Letcombe Regis,  
South Street, Letcombe Regis, Oxfordshire OX12 9RG

# 79 Mill Stream Mews

Ground Floor | 132.7m<sup>2</sup> - 1428ft<sup>2</sup>

- Kitchen**  
2485mm x 4767 mm  
8'2" x 15'8"
- Dining Room**  
2932mm x 4767mm  
9'7" x 15'8"
- Living Room**  
6854mm x 6445 mm  
22'6" x 21'2"
- Bedroom 1**  
5044mm x 4142mm  
16'7" x 13'7"
- Shower Room 1**  
2300mm x 2050mm  
7'7" x 6'9"
- Bedroom 2**  
3681 mm x 4174mm  
12'1" x 13'8"
- Shower Room 2**  
2300mm x 2010mm  
7'7" x 6'7"



These particulars are intended to give a fair and substantially correct overall description. Measurements have been taken at 1500mm skirting height. All dimensions are approximate. Bedroom measurements include the wardrobe if applicable. Room measurements include bay windows if applicable. Furniture layout is to give an indicative impression. Although all efforts have been made to ensure its accuracy at time of print dimensions, fixtures, fittings, finishes and specifications are subject to change without notice. The properties are sold unfurnished.

