

# 68 Tuckers Court, £480,000

(Other charges apply)

RICHMOND  
VILLAGES

Part of Bupa



2



1



EPC - B



## 2 bedroom, first floor apartment

68 Tuckers Court is a light and spacious, first floor, two-bedroom property. Featuring a West-facing balcony from the living room that overlooks our landscaped grounds and gardens. The apartment has triple aspects facing East, West and South, and offers plenty of natural light. This apartment is perfectly situated within the desirable Tuckers Court area of the village, making this a sought-after property, and it is very close to the main village centre facilities and the landscaped grounds.

### Specification

- A bright and spacious living room with French doors leading to West-facing balcony. Feature fireplace with Bath stone effect surround.
- Modern fitted kitchen with range of wall and base units and integrated appliances including Neff fridge/freezer, dishwasher, double oven and ceramic hob.
- Master bedroom with floor-to-ceiling fitted wardrobes.
- Second bedroom with storage space..
- En-suite shower room with walk-in shower and fully fitted suite.
- Entrance hall with laundry cupboard.
- TV and satellite points\*.
- Well stocked flower borders and lawns maintained by the Village Gardeners.
- Allocated parking space for one car.

\*Satellite subscription not included.

Important Notice: These particulars are intended to give a fair and substantially correct overall description. **Other fees and charges apply**, please contact the Village Advisers for further details. Properties are sold on a 125 year lease and this property has 115 years remaining.



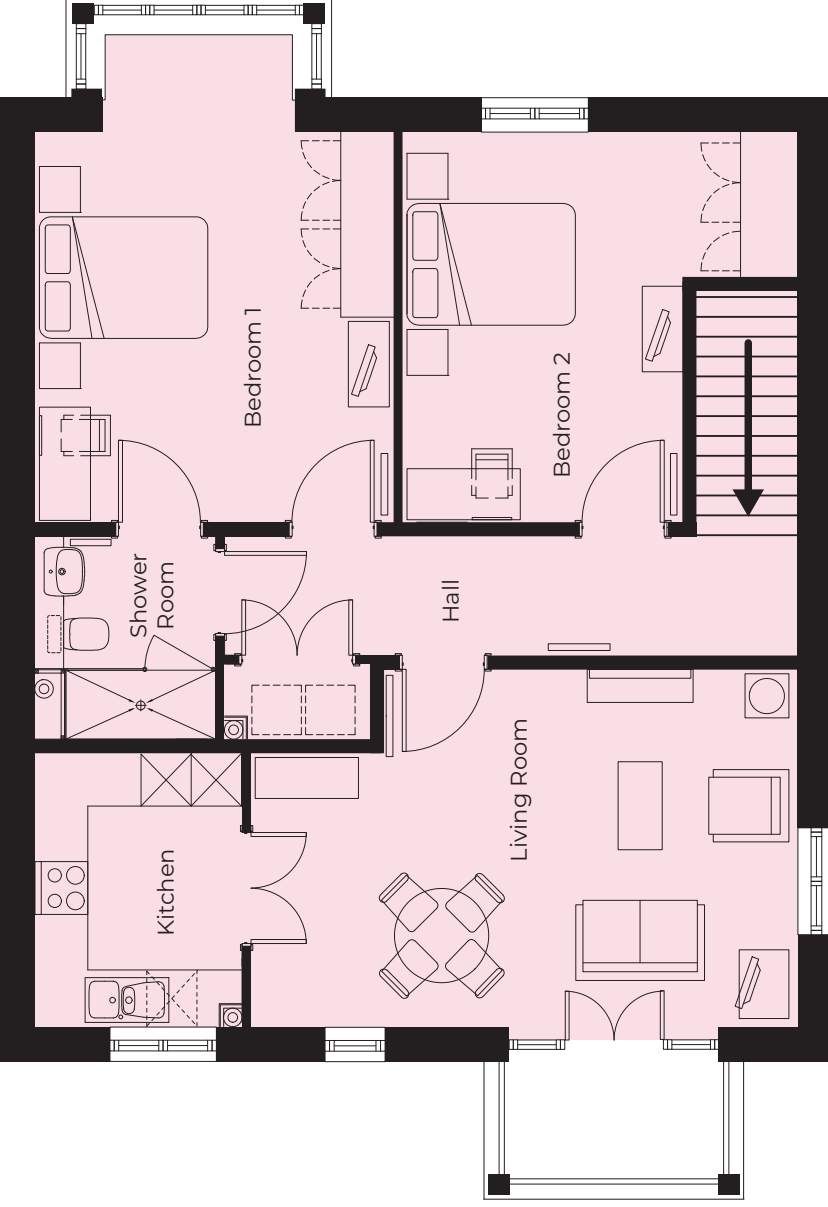
01993 894 000

witney@richmond-villages.com

Richmond Villages Witney,  
Coral Springs Way, Witney, Oxfordshire OX28 5DG

# 68 Tuckers Court

First Floor | 90.72m<sup>2</sup> – 976.5ft<sup>2</sup>



<b>Kitchen</b>	3060mm x 2350mm 10' x 7'9"
<b>Living Room</b>	6155mm x 4010mm 20'2" x 13'2"
<b>Bedroom 1</b>	5586mm x 4070mm (into bay) 18'4" x 13'4"
<b>Shower Room</b>	2300mm x 2050mm 7'7" x 6'9"
<b>Bedroom 2</b>	4427mm x 3175mm 14'6" x 10'5"

These particulars are intended to give a fair and substantially correct overall description.

Measurements have been taken at 1500mm skelling height.

All dimensions are approximate. Bedroom measurements include the wardrobe if applicable. Room measurements include bay windows if applicable.

Furniture layout is to give an indicative impression. Although all efforts have been made to ensure its accuracy at time of print dimensions, fixtures, fittings, finishes and

specifications are subject to change without notice.

The properties are sold unfurnished.

