

23 Rowan Gardens, £430,000

(Other charges apply)

RICHMOND
VILLAGES

Part of Bupa



2



2



EPC - B



2 bedroom ground floor apartment

Part of the most recent phase of construction at Richmond Villages Aston on Trent, we are pleased to offer for sale this delightful, ground floor, two bedroom apartment, which benefits from an easterly-facing aspect, with no upward chain.

Specification

- Large bright lounge / dining room with a double glazed French doors leading to a west-facing patio overlooking the meadow area.
- Fitted kitchen with stone worktops and peninsular a range of wall and base units with under cupboard lighting.
- A spacious double bedroom with double glazed south and west-facing windows and fitted white double wardrobes.
- En-Suite shower room with large shower area and glazed screen.
- Double bedroom with double glazed east-facing window.
- Bathroom with low level bath.
- Central heating radiators in all rooms. TV and satellite points*.
- Well stocked flower borders and lawns maintained by the Village Gardeners.
- Allocated parking space for one car.



*Satellite subscription not included.

Important Notice: These particulars are intended to give a fair and substantially correct overall description. Other fees and charges apply, please contact the Village Advisers for further details. Properties are sold on a 125 year lease and this property has 120 years remaining.

01332 794300

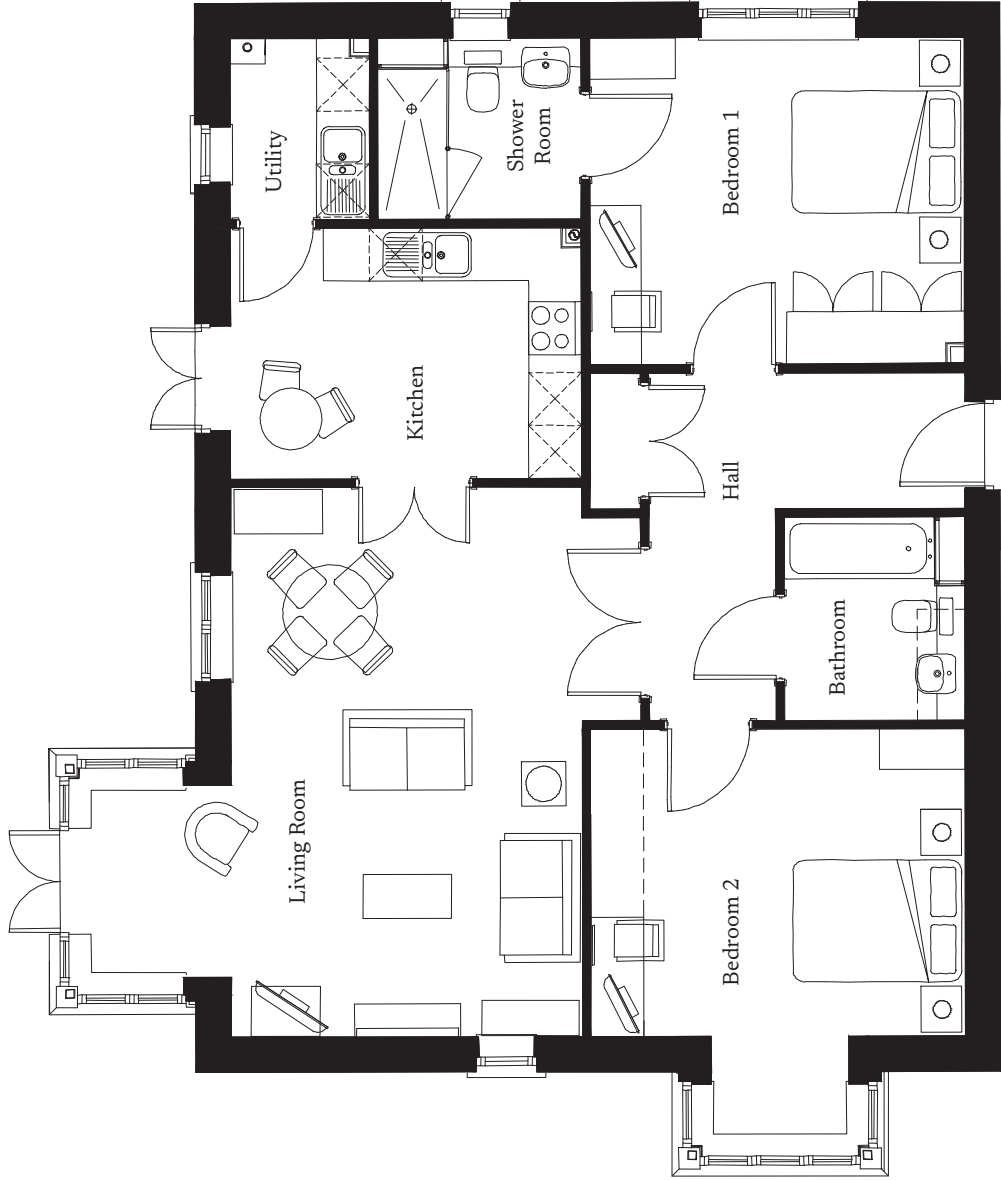
astonontrent@richmond-villages.com

Richmond Villages Aston-on-Trent,
Richmond Drive, Aston-on-Trent, Derbyshire DE72 2EA

23 Rowan Gardens

Ground Floor | 99m² – 1065ft²

- Kitchen**
3977mm x 2839mm
13'1" x 9'4"
- Living Room**
6224mm x 4639mm
20'5" x 15'5"
- Bedroom 1**
4242mm x 3700mm
13'11" x 12'2"
- Shower Room 1**
2300mm x 2050mm
7'7" x 6'9"
- Bedroom 2**
4242mm x 3482mm
13'11" x 11'5"
- Bathroom**
2383mm x 2045mm
7'10" x 5'9"



These particulars are intended to give a fair and substantially correct overall description. Measurements have been taken at 1500mm skirting height. All dimensions are approximate. Bedroom measurements include the wardrobe if applicable. Room measurements include bay windows if applicable. Furniture layout is to give an indicative impression. Although all efforts have been made to ensure its accuracy at time of print dimensions, fixtures, fittings, finishes and specifications are subject to change without notice. The properties are sold unfurnished.

