

32 Tuckers Court, £625,000

(Other charges apply)

RICHMOND
VILLAGES

Part of Bupa



2



2



EPC - B



2 bedroom, first-floor apartment

Apartment 32 Tuckers Court is a large, spacious, first-floor, two-bedroom property, featuring three separate balconies from the living room and both bedrooms. The apartment has triple aspects facing North, West and South, and offers plenty of natural light. This apartment, alongside the apartment below, is a detached building, making this a highly desirable property, and is very close to the main village centre and facilities as well as the landscaped grounds.

Specification

- A bright living/dining room with North, West and South facing views. French doors leading to a balcony. Electric fire with Bath stone-effect surround.
- Modern fitted kitchen with range of wall and base units and integrated Neff appliances including fridge/freezer, and oven and hob.
- Master bedroom with fitted wardrobes and French doors leading to West facing balcony.
- Second bedroom with fitted wardrobes and French doors leading to a second West facing Balcony.
- En-suite shower room with walk-in shower and fully fitted suite.
- Bathroom with bath with shower over and fully fitted suite.
- Entrance hall with storage cupboard and laundry cupboard.
- TV and satellite points*.
- Well stocked flower borders and lawns maintained by the Village Gardeners.
- Allocated parking space for one car.

*Satellite subscription not included.

Important Notice: These particulars are intended to give a fair and substantially correct overall description. **Other fees and charges apply**, please contact the Village Advisers for further details. Properties are sold on a 125 year lease and this property has 115 years remaining.



01993 894 000

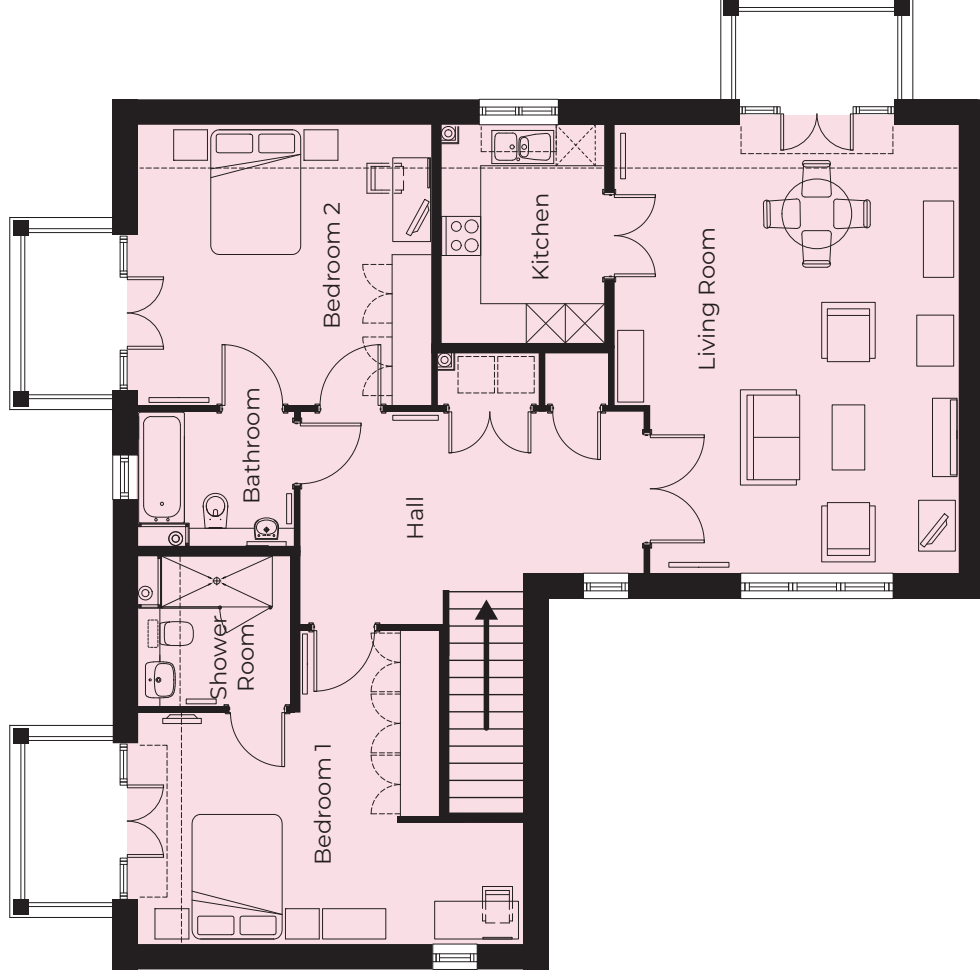
witney@richmond-villages.com

Richmond Villages Witney,
Coral Springs Way, Witney, Oxfordshire OX28 5DG

32 Tuckers Court

First Floor | 118.83m² – 1279ft²

- Kitchen**
3315mm x 2490mm
10'11" x 8'2"
- Living Room**
6835mm x 5253mm
22'5" x 17'3"
- Bedroom 1**
5854mm x 3553mm
19'2" x 11'8"
- Shower Room**
2300mm x 2300mm
7'7" x 7'7"
- Bedroom 2**
4465mm x 4275mm
14'8" x 14'
- Bathroom**
2360mm x 2045mm
7'9" x 6'9"



These particulars are intended to give a fair and substantially correct overall description. Measurements have been taken at 1500mm skirting height. All dimensions are approximate. Bedroom measurements include the wardrobe if applicable. Room measurements include bay windows if applicable. Furniture layout is to give an indicative impression. Although all efforts have been made to ensure its accuracy at time of print dimensions, fixtures, fittings, finishes and specifications are subject to change without notice. The properties are sold unfurnished.

