

# 58 Village Centre – £215,000

RICHMOND  
VILLAGES

Part of Bupa

(Other charges apply)



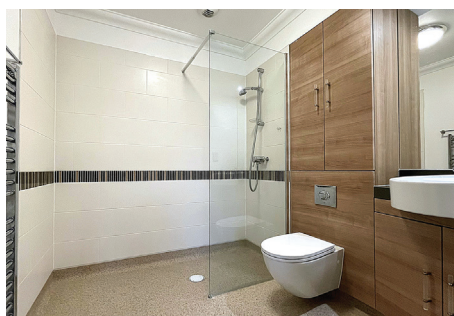
1



1



EPC - C



## 1 bedroom assisted living apartment

We are delighted to offer for sale this bright and spacious one-bedroom, second-floor apartment featuring delightful views overlooking the lake, and lift access through the building. The property is perfectly situated within easy access to our outstanding on-site facilities including the restaurant, bar, reception, art studio, library, Wellness Spa, beautifully manicured gardens, bowling green, café and shop.

### Specification

- Spacious living room with west-facing window with views over the lake and nature reserve. Remote controlled electric fire with Bath stone effect surround.
- Modern fitted kitchenette with under cupboard lighting and built-in fridge.
- Master bedroom with views over the lake.
- En-suite shower room with walk-in shower and fully fitted sanitary ware.
- Entrance hall with storage cupboard.
- Central heating radiators in all rooms.
- TV and satellite points\*.
- Laid lawns and well stocked flower borders maintained by the Village Gardeners.
- Allocated parking space for one car.

\*Satellite subscription not included.

Important Notice: These particulars are intended to give a fair and substantially correct overall description. **Other fees and charges apply**, please contact the Village Advisers for further details. Properties are sold on a 125 year lease and this property has 110 years remaining.



01235 773970

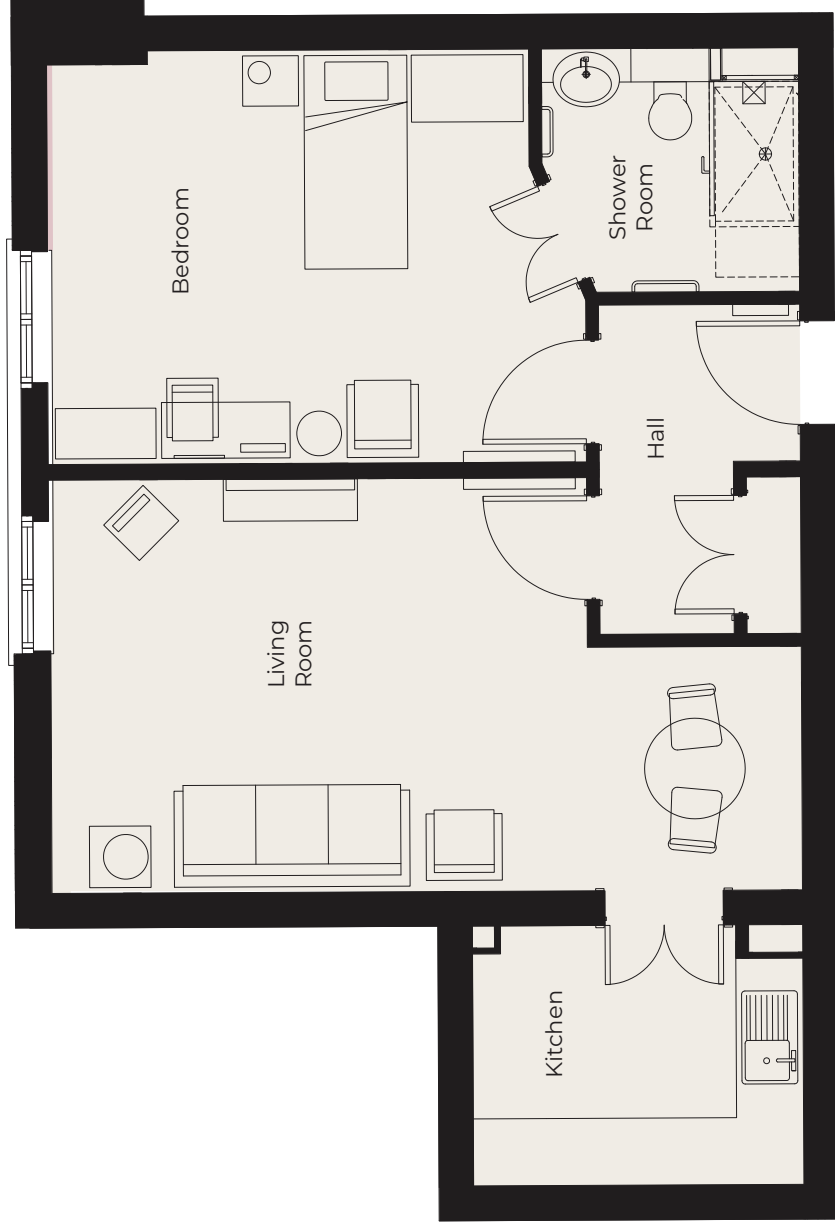
letcomberegis@richmond-villages.com

Richmond Villages Letcombe Regis,  
South Street, Letcombe Regis, Oxfordshire OX12 9RG

# 58 Village Centre

Second Floor | 59.6m<sup>2</sup> (618ft<sup>2</sup>)

- Kitchen**  
2955mm x 2330mm  
9'8" x 7'7"
- Living Room**  
6720mm x 3700mm  
22'1" x 12'2"
- Bedroom**  
4300mm x 3700mm  
14'1" x 12'2"
- Shower Room**  
2300mm x 2180mm  
7'7" x 7'2"



These particulars are intended to give a fair and substantially correct overall description.

Measurements have been taken at 1500mm skirting height.

All dimensions are approximate. Bedroom measurements include the wardrobe if applicable. Room measurements include bay windows if applicable.

Furniture layout is to give an indicative impression. Although all efforts have been made to ensure its accuracy at time of print dimensions, fixtures, fittings, finishes and specifications are subject to change without notice.

The properties are sold unfurnished.

