

Apartment 27, £245,000

(Other charges apply)

RICHMOND
VILLAGES

Part of Bupa

GF

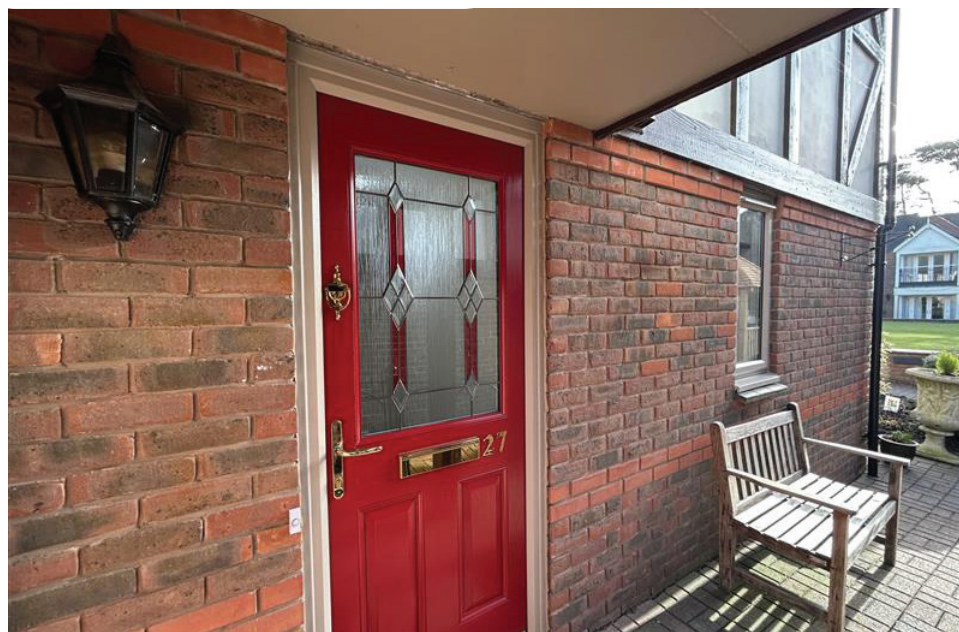
1



1



EPC - D



1 bedroom ground floor apartment

Nestled on the South side of the Bowling Green, No. 27 is a beautiful one bedroom apartment. This property has Southerly views and a lovely patio area, it has recently been repainted and recarpeted throughout.

Specification

- The bright and charming living room is well proportioned, providing a lovely space to entertain family or friends, and enjoys stunning views across the Bowling Green. Offering a double-glazed bay window and French Doors opening out to a patio area.
- The well-equipped fitted kitchen has wall and base units, stainless steel sink and drainer, ample work surfaces, built-in eye level oven and microwave, hob, and integrated fridge freezer.
- The bedroom is a light and airy space and has plenty of room for storage with floor to ceiling built in wardrobes.
- Shower room has a WC and wash hand basin set within a vanity unit plus Belfast sink. Heated towel rail.
- Central heating radiators in all rooms. TV and satellite points*.
- Well stocked flower borders and lawns maintained by the Village Gardeners.
- Allocated parking space for one car.



*Satellite subscription not included.

Important Notice: These particulars are intended to give a fair and substantially correct overall description. Other fees and charges apply, please contact the Village Advisers for further details. Properties are sold on a 125 year lease and this property has 107 years remaining.

01270 629 080

nantwich@richmond-villages.com

Richmond Villages Nantwich,
St Joseph's Way, Nantwich, Cheshire CW5 6LZ

Apartment 27

Ground Floor | 507ft²

Living Room

11'6" x 10'10"

Kitchen

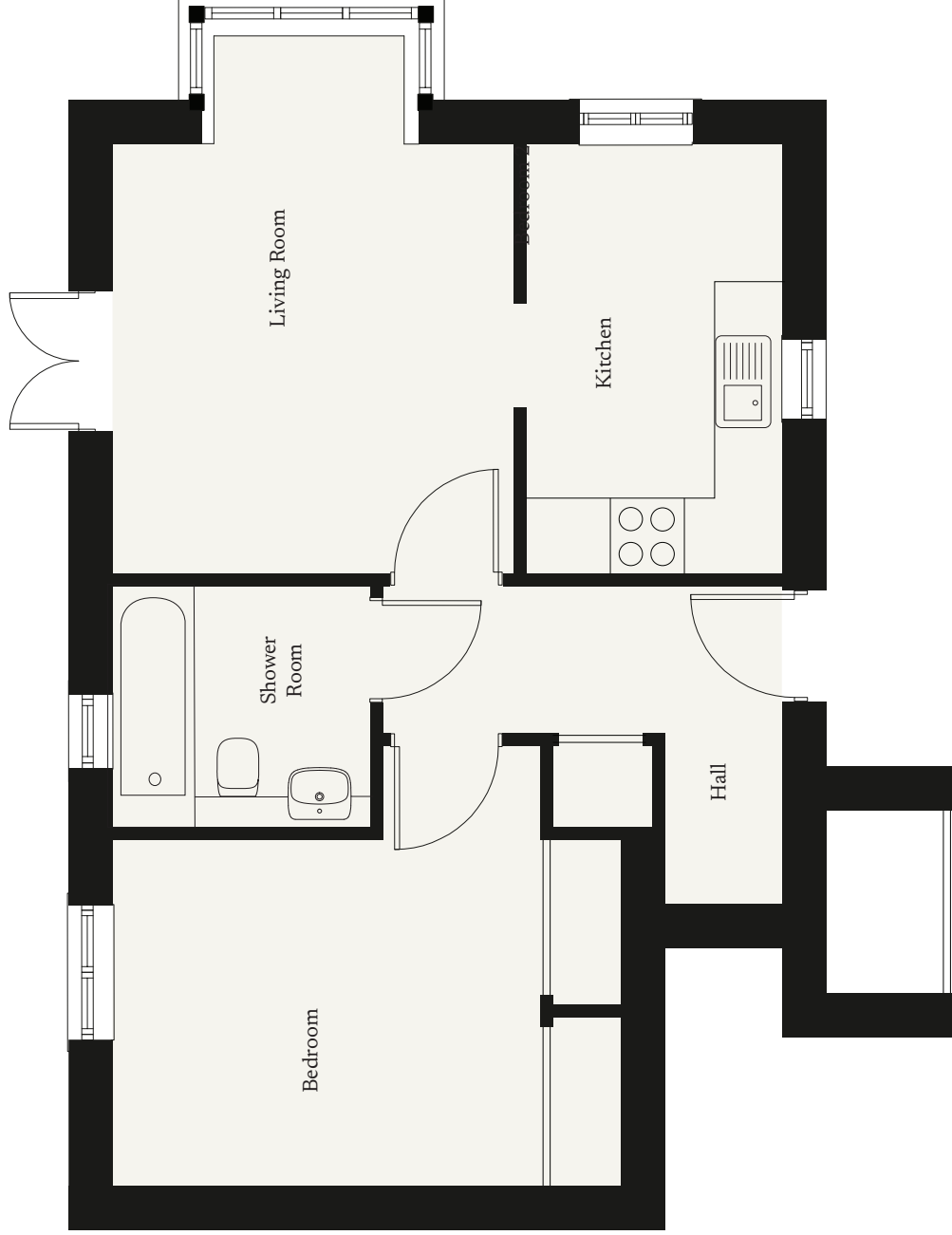
11'6" x 7'0"

Bedroom

11'8" x 9'8"

Bathroom

7'1" x 6'5"



These particulars are intended to give a fair and substantially correct overall description.

Measurements have been taken at 1500mm ceiling height.

All dimensions are approximate. Bedroom measurements include the wardrobe if applicable. Room measurements include bay windows if applicable.

Furniture layout is to give an indicative impression. Although all efforts have been made to ensure its accuracy at time of print dimensions, fixtures, fittings, finishes and specifications are subject to change without notice.

The properties are sold unfurnished.

