

1 Abingdon – £129,950*

(Other charges apply)

RICHMOND
VILLAGES

Part of Bupa



1



1



EPC - C



1 bedroom ground floor apartment

We are delighted to offer 1 Abingdon, this beautifully positioned 1 bedroom assisted living apartment featuring delightful views over a private patio and the decking area beyond. The property is perfectly situated within easy access of our outstanding on-site facilities including the restaurant, bar, reception and hairdressers, beautifully manicured gardens, bowling green and shop. Stunning property, ready to move into.

Specification

- Spacious living/dining room with a feature fireplace and double doors with patio area
- Kitchenette with a range of cupboards and fridge-freezer
- Double bedroom with built-in wardrobe
- Shower room with walk-in shower and fitted white suite.
- TV and satellite points*
- Well stocked flower borders and lawns maintained by the Village Gardeners
- Allocated parking space for one car



*Satellite subscription not included.

Important Notice: These particulars are intended to give a fair and substantially correct overall description. **Other fees and charges apply**, please contact the Village Advisers for further details. Properties are sold on a 125 year lease and this property has 105 years remaining.

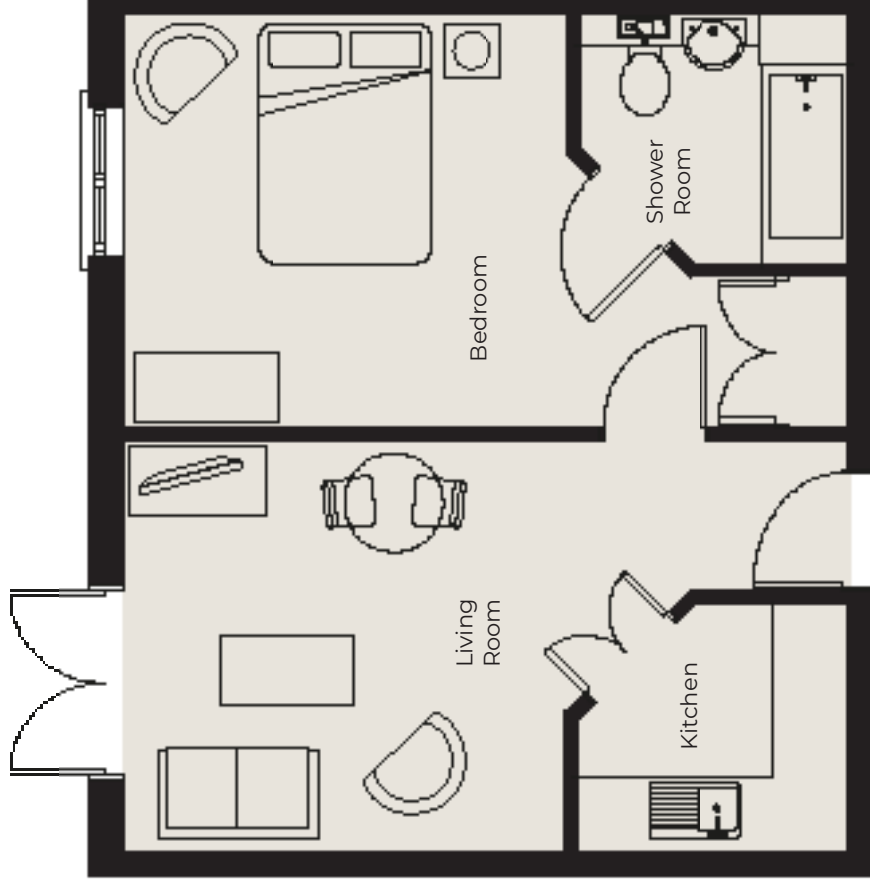
02476 645544

bedevillage@richmond-villages.com

Richmond Villages Bede,
Hospital Lane, Bedworth, Warwickshire CV12 0PB

1 Abingdon

Ground Floor



Kitchen	2167mm x 2011mm 7'11" x 6'6"
Living Room	3657mm x 3505mm 12' x 11'5"
Bedroom	3657mm x 3505mm 12' x 11'5"
Shower Room	2167mm x 2011mm 7'11" x 6'6"

These particulars are intended to give a fair and substantially correct overall description.

Measurements have been taken at 1500mm skirting height.

All dimensions are approximate. Bedroom measurements include the wardrobe if applicable. Room measurements include bay windows if applicable.

Furniture layout is to give an indicative impression. Although all efforts have been made to ensure its accuracy at time of print dimensions, fixtures, fittings, finishes and specifications are subject to change without notice.

The properties are sold unfurnished.

