

# 64 Village Centre, £338 pw\*

(Other charges apply)

**RICHMOND  
VILLAGES**

*Part of Bupa*

2F

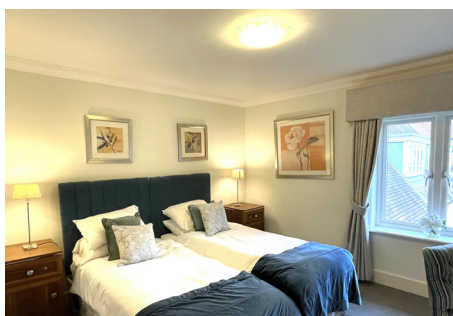
1



1



EPC - C



## 1 bedroom second floor apartment

We are delighted to offer this one-bedroom apartment, located on the top floor of this luxurious living development. There is no need to use the stairs; we have elevators around the building. With views over the courtyard, this apartment offers peace, comfort, and tranquillity. If this is not what you are looking for, we offer the best of both worlds. Just a short elevator trip and you will find yourself in a vibrant retirement village, where you are free to explore the many facilities on offer.

### Specification

- Cosy sitting room with a pleasant view over the village courtyard and remote-controlled electric fire
- Modern fitted kitchenette with under cupboard lighting and built-in fridge with freezer compartment.
- Main bedroom with further views over the courtyard
- En-suite shower room with walk in shower, fitted sanitary ware and heated towel rail.
- Entrance hall with storage cupboard.
- TV and satellite points\*
- Well stocked flower borders and lawn maintained by the Village Gardeners
- Allocated parking space for one car



\*Satellite subscription not included.

Important Notice: These particulars are intended to give a fair and substantially correct overall description. Other fees and charges apply, please contact the Village Advisers for further details. Tenancy is for a minimum of 6 months and then will default to a monthly contract.

**01235 773 970**

letcomberegis@richmond-villages.com

**Richmond Villages Letcombe Regis,**  
South Street, Wantage OX12 9RG

# 64 Village Centre

Second Floor | 466ft<sup>2</sup>

## Kitchenette

2300mm x 2180mm

7'7" x 7'2"

## Living Room

4300mm x 3700mm

14'1" x 12'2"

## Bedroom

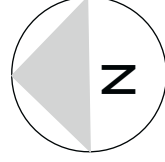
4300mm x 3700mm

14'1" x 12'2"

## Shower Room

2300mm x 2180mm

7'7" x 7'2"



These particulars are intended to give a fair and substantially correct overall description.

Measurements have been taken at 1500mm skirting height.

All dimensions are approximate. Bedroom measurements include the wardrobe if applicable. Room measurements include bay windows if applicable.

Furniture layout is to give an indicative impression. Although all efforts have been made to ensure its accuracy at time of print dimensions, fixtures, fittings, finishes and

specifications are subject to change without notice.

The properties are sold unfurnished.