

44 Village Centre, £467,500*

(Other charges apply)

RICHMOND
VILLAGES

Part of Bupa

2F

2 

2 

EPC - C



2 bedroom second floor apartment

We are delighted to offer this well-presented two-bedroom apartment. The property is perfectly situated within our main building, providing easy access of our outstanding on-site facilities including the restaurant, café bar, reception, library, wellness spa, beautifully manicured gardens and bowling green.

Specification

- A bright West-facing living room with double-glazed windows offering views looking over our main entrance and beyond. Feature fireplace.
- The well-equipped fitted kitchen has wall and base units with under cupboard lighting, stainless steel sink and drainer, and integrated under counter fridge. With downlights floor to ceiling.
- Main bedroom with with floor to ceiling fitted wardrobes.
- En-suite shower room with walk-in shower and fully fitted suite.
- Second bedroom with further storage space and fitted blind.
- Second en-suite Shower room with walk-in shower and fully fitted suite.
- Entrance hall with storage cupboards.
- TV and satellite points*.
- Well stocked flower borders and lawns maintained by the Village Gardeners.
- Allocated parking space for one car.



*Satellite subscription not included.

Important Notice: These particulars are intended to give a fair and substantially correct overall description. **Other fees and charges apply**, please contact the Village Advisers for further details. Properties are sold on a 125 year lease and this property has 115 years remaining.

01993 894 000

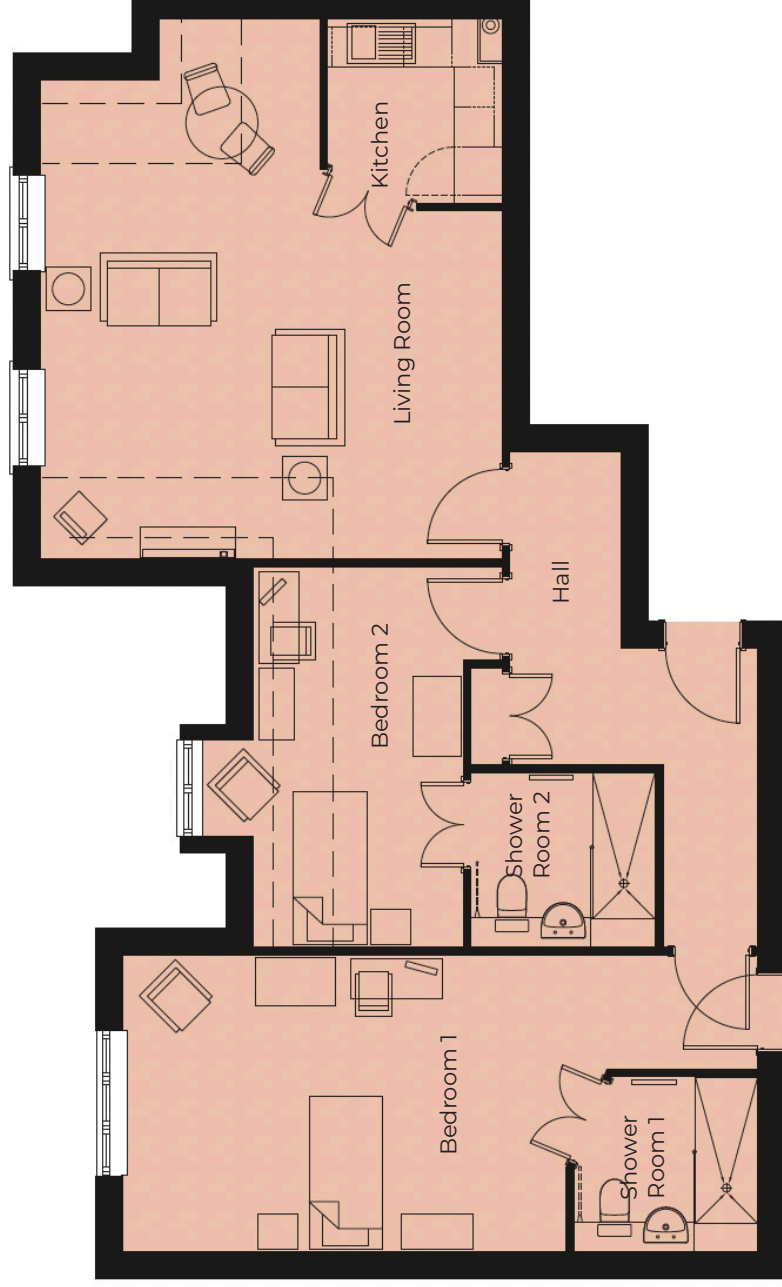
witney@richmond-villages.com

Richmond Villages Witney,
Coral Springs Way, Witney, Oxfordshire OX28 5DG

44 Village Centre

Second Floor

Kitchen	2300mm x 2180mm 7'7" x 6'7"
Living Room	5425mm x 5750mm 17'10" x 18'10"
Bedroom 1	5525mm x 3710mm 18'2" x 12'2"
Shower Room 1	2300mm x 2180mm 7'6" x 7'2"
Bedroom 2	4770mm x 2377mm 15'8" x 7'10"
Shower Room 2	2300mm x 2180mm 7'6" x 7'2"



These particulars are intended to give a fair and substantially correct overall description.

Measurements have been taken at 1500mm skirting height.

All dimensions are approximate. Bedroom measurements include the wardrobe if applicable. Room measurements include bay windows if applicable.

Furniture layout is to give an indicative impression. Although all efforts have been made to ensure its accuracy at time of print dimensions, fixtures, fittings, finishes and specifications are subject to change without notice.

The properties are sold unfurnished.

