

3 Bradmore Gardens, £375,000*

(Other charges apply)

RICHMOND
VILLAGES

Part of Bupa



2



2



EPC - B



2 bedroom first floor apartment

Richmond Villages Aston-On-Trent are pleased to offer for resale this large two-bedroom apartment with views unto the open meadow area. The apartment is situated close to the main village centre and village facilities.

Specification

- Spacious and bright living room with double glazed windows overlooking the surrounding gardens and park land. Modern remote controlled electric fire with feature surround.
- Modern fitted kitchen with granite worktops, under cupboard lighting and built-in Neff appliances including electric oven and hob, fridge/freezer and dishwasher.
- Spacious main bedroom with fitted wardrobes.
- En-suite shower room with walk-in shower and fully fitted white suite.
- Second bedroom with double glazed window.
- Bathroom with shower over bath and fully fitted white suite.
- Entrance hall with large storage cupboard.
- Central heating radiators in all rooms. TV and satellite points*.
- Well stocked flower borders and lawns maintained by the Village Gardeners.
- Allocated parking space for one car.

*Satellite subscription not included.

Important Notice: These particulars are intended to give a fair and substantially correct overall description. **Other fees and charges apply**, please contact the Village Advisers for further details. Properties are sold on a 125 year lease and this property has 120 years remaining.

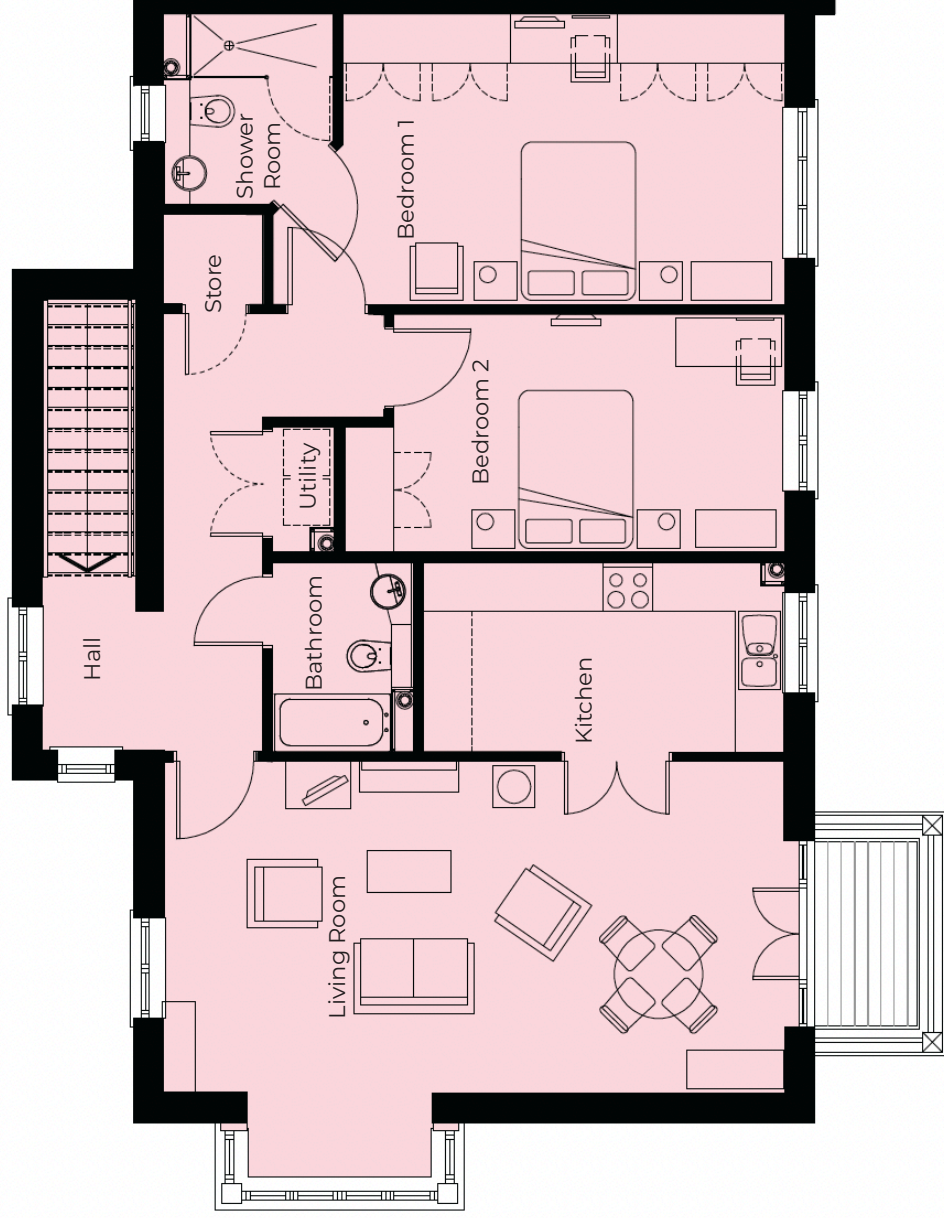
01332 794300

astonontrent@richmond-villages.com

Richmond Villages Aston-on-Trent,
Richmond Drive, Aston-on-Trent, Derbyshire DE72 2EA

3 Bradmore Gardnes

First Floor | 102.3m² – 1101ft²



Kitchen	4380mm x 2280mm
14'4" x 7'6"	
Living Room	7515mm x 4986mm
24'8" x 16'4"	
Bedroom 1	6195mm x 3472mm
20'4" x 11'5"	
Shower Room 1	2300mm x 2050mm
7'7" x 6'9"	
Bedroom 2	5330mm x 2873mm
17'5" x 9'5"	
Bathroom	2288mm x 1700mm
7'6" x 5'7"	

These particulars are intended to give a fair and substantially correct overall description.

Measurements have been taken at 1500mm skelling height.

All dimensions are approximate. Bedroom measurements include the wardrobe if applicable. Room measurements include bay windows if applicable.

Furniture layout is to give an indicative impression. Although all efforts have been made to ensure its accuracy at time of print dimensions, fixtures, fittings, finishes and specifications are subject to change without notice.

The properties are sold unfurnished.

