

# 18 Milestones Close, £330,000

(Other charges apply)

RICHMOND  
VILLAGES

Part of Bupa



EPC - B



## 2 bedroom ground floor apartment

Well-presented and generously proportioned ground floor apartment available for sale with no upward chain. The apartment benefits from a private entrance hall, lounge/diner, fitted kitchen, main bedroom with en-suite, a second bedroom and an enclosed patio. The apartment is in close proximity to the restaurant, bar, reception, library, Wellness Spa, seating areas and Clubhouse Café.

### Specification

- Spacious living room with French doors leading to east-facing private patio. Modern remote controlled electric fire and surround.
- Modern fitted kitchen with high quality units and work surfaces, under cupboard lighting and built in Neff appliances including fan oven, electric hob, microwave, fridge freezer and dishwasher.
- Main bedroom with fitted wardrobes.
- Jack and Jill shower room with walk-in shower, high quality fitted suite and heated towel rail.
- Second bedroom with west-facing aspect
- Entrance hall with a large storage cupboard and separate washing machine and tumble dryer.
- Central heating radiators in all rooms. TV and satellite points\*.
- Well stocked flower borders and lawns maintained by the Village Gardeners.
- Allocated parking space for one car.

\*Satellite subscription not included.

Important Notice: These particulars are intended to give a fair and substantially correct overall description. Other fees and charges apply, please contact the Village Advisers for further details. Properties are sold on a 125 year lease and this property has 117 years remaining.

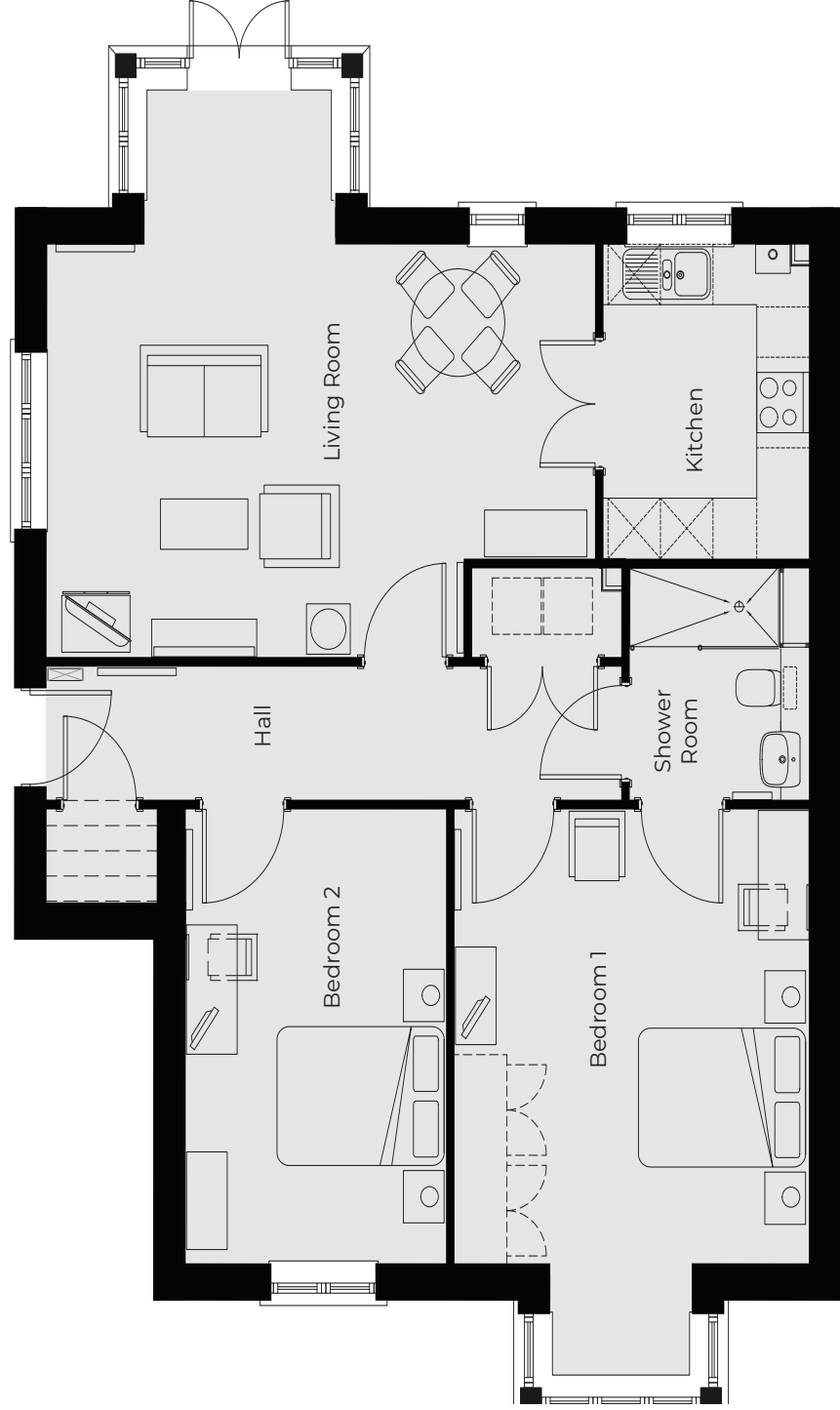
01332 794 300

astonontrent@richmond-villages.com

Richmond Villages Aston-on-Trent,  
Richmond Drive, Aston-on-Trent, Derbyshire DE72 2EA

# 18 Milestones Close

Ground Floor | 87.5m<sup>2</sup> – 942ft<sup>2</sup>



- Kitchen**  
3123mm x 2352mm  
10'2" x 7'7"
- Living Room**  
6263mm x 5709mm  
20'5" x 18'7"
- Bedroom 1**  
5640mm x 4055mm  
18'5" x 13'3"
- Shower Room**  
2300mm x 2050mm  
7'5" x 6'7"
- Bedroom 2**  
4512mm x 2972mm  
14'8" x 9'7"

These particulars are intended to give a fair and substantially correct overall description. Measurements have been taken at 1500mm skirting height. All dimensions are approximate. Bedroom measurements include the wardrobe if applicable. Room measurements include bay windows if applicable. Furniture layout is to give an indicative impression. Although all efforts have been made to ensure its accuracy at time of print dimensions, fixtures, fittings, finishes and specifications are subject to change without notice. The properties are sold unfurnished.

