

# 30 Village Centre, £250,000\*

(Other charges apply)

RICHMOND  
VILLAGES

Part of Bupa



1



1



EPC - C



## 1 bedroom first floor apartment

An attractive first-floor one-bedroom apartment covering over 564 sqft. The accommodation comprises an entrance hall with storage cupboard, living room with French doors leading to a large balcony, fully fitted modern kitchen and master bedroom with en-suite shower room. Under-floor heating throughout with carpets, flooring and curtains included. The apartment is situated in the main village centre building close to all village facilities.

### Specification

- Spacious living room with French doors leading to a large balcony.
- Modern remote controlled electric fire and surround.
- Modern fitted kitchenette with range of wall and base units, integrated Neff fridge and undercupboard lighting.
- Spacious bedroom with large window.
- En-suite shower room with walk-in shower and fully fitted white suite.
- Entrance hall with large storage cupboard.
- TV and satellite points\*.
- Well stocked flower borders and lawns maintained by the Village Gardeners.
- Allocated parking space for one car.



\*Satellite subscription not included.

Important Notice: These particulars are intended to give a fair and substantially correct overall description. **Other fees and charges apply**, please contact the Village Advisers for further details. Properties are sold on a 125 year lease and this property has 123 years remaining.

01332 794300

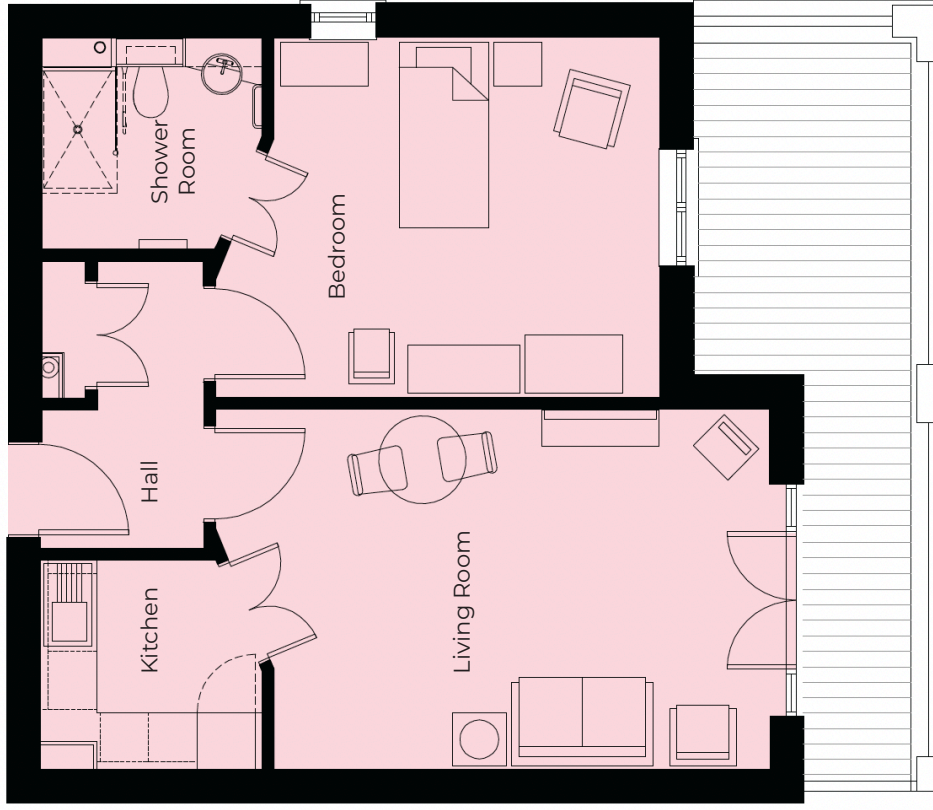
astonontrent@richmond-villages.com

Richmond Villages Aston-on-Trent,  
Richmond Drive, Aston-on-Trent, Derbyshire DE72 2EA

# 30 Village Centre

First Floor | 52.40m<sup>2</sup> (564ft<sup>2</sup>)

<b>Kitchen</b>
2300mm x 2180mm
7'7" x 7'2"
<b>Living Room</b>
5110mm x 3710mm
16'9" x 12'2"
<b>Bedroom</b>
3985mm x 3710mm
13'1" x 12'2"
<b>Shower Room</b>
2300mm x 2180mm
7'7" x 7'2"



These particulars are intended to give a fair and substantially correct overall description. Measurements have been taken at 1500mm skirting height. All dimensions are approximate. Bedroom measurements include the wardrobe if applicable. Room measurements include bay windows if applicable. Furniture layout is to give an indicative impression. Although all efforts have been made to ensure its accuracy at time of print dimensions, fixtures, fittings, finishes and specifications are subject to change without notice. The properties are sold unfurnished.

