

15 Abingdon, £409,995*

(Other charges apply)

RICHMOND
VILLAGES

Part of Bupa

1F

2



2



EPC - C



2 bedroom first floor apartment

Richmond Villages Northampton is delighted to offer this spacious first floor south facing apartment with views over the surrounding countryside. The apartment comprises entrance hall, living / dining room, kitchen, two double bedrooms with the main bedroom benefiting from its own en-suite and a further family bathroom.

Specification

- Generously sized living area with double-glazed French doors leading to a balcony with views overlooking open countryside along with a feature fireplace with attractive surround. TV and satellite point*.
- The modern high gloss fitted kitchen is well equipped with a range of wall and base units, with modern Quartz worktops and tiled area, stainless steel sink and drainer and integrated appliances.
- Spacious main bedroom with en-suite shower room
- Light and airy second bedroom with TV and satellite extension points. The bedroom also has fitted light oak wardrobes.
- Modern ensuite and family bathroom
- Lovely on-site facilities
- Centred around community & wellbeing
- Beautifully manicured gardens
- Allocated parking space for one car
- Council band E

*Satellite subscription not included.

Important Notice: These particulars are intended to give a fair and substantially correct overall description. **Other fees and charges apply**, please contact the Village Advisers for further details. Properties are sold on a 125 year lease and this property has 107 years remaining.



01604 273 970

norhampton@richmond-villages.com

Richmond Villages Northampton,
Bridge Meadow Way, Grange Park, Northampton, NN4 5EB

15 Abingdon

First Floor

Kitchen

11'1" x 7'7"

Living Room

21'4" x 12'5"

Bedroom 1

21'4" x 11'9"

Bathroom

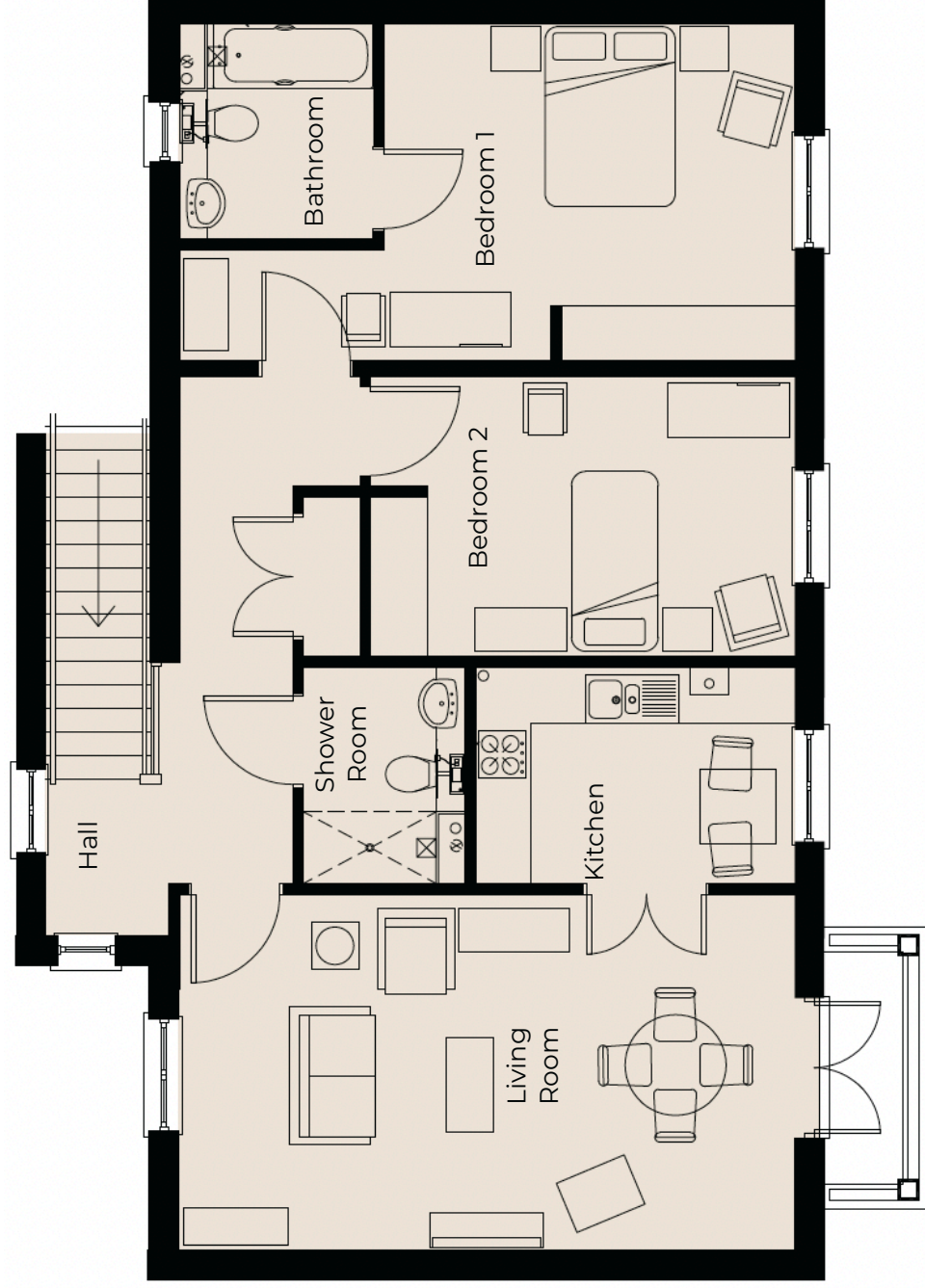
7'7" x 6'9"

Bedroom 2

14'9" x 9'9"

Shower Room

7'7" x 5'7"



These particulars are intended to give a fair and substantially correct overall description.

Measurements have been taken at 1500mm skirting height.

All dimensions are approximate. Bedroom measurements include the wardrobe if applicable. Room measurements include bay windows if applicable.

Furniture layout is to give an indicative impression. Although all efforts have been made to ensure its accuracy at time of print dimensions, fixtures, fittings, finishes and specifications are subject to change without notice.

The properties are sold unfurnished.