

No. 53, £495,000

(Other charges apply)

RICHMOND
VILLAGES

Part of Bupa



2



2



EPC - C



2 bedroom property

A most impressive and unique property located over two floors, No. 53 is situated on the edge of our private Woodlands. With a wrap-round patio and benefitting from dual South/West aspects, it is the largest property available

Specification

- The well-equipped and generously sized fitted kitchen/diner has wall to ceiling and base units. It also features French doors out to a South facing paved patio area and additional window with Westerly views across a secluded patio.
- The stylish living room is large and well proportioned. The most impressive feature of the room is a full wall bespoke wooden library with a mixture of shelves/cupboards.
- The main bedroom is on the first floor and is large, light, and airy courtesy of the stunning French windows opening out onto a South facing balcony
- The second bedroom is located downstairs and is also generously sized with floor to ceiling fitted wardrobes.
- A stunning part of the house that has been used as a sitting/tv area. With storage cupboards and roof light this is a lovely feature that is also a very flexible space.
- Shower room with walk in shower.
- A convenient en-suite, with bath, shower over, wc and sink.
- Central heating radiators in all rooms. TV and satellite points*.
- Well stocked flower borders and lawns maintained by the Village Gardeners.
- Allocated parking space for one car.

*Satellite subscription not included.

Important Notice: These particulars are intended to give a fair and substantially correct overall description. Other fees and charges apply, please contact the Village Advisers for further details. Properties are sold on a 125 year lease and this property has 125 years remaining.



01270 629 080

nantwich@richmond-villages.com

Richmond Villages Nantwich,
St Joseph's Way, Nantwich, Cheshire CW5 6LZ

No.53

Kitchen

3505mm x 3200mm

11'5" x 10'5"

Living Room

5791mm x 3505mm

19' x 11'5"

Bedroom 1

3505mm x 3291mm

11'5" x 10'8"

Bathroom

2895mm x 1798mm

9'5" x 5'9"

Bedroom 2

4114mm x 3505mm

13'5" x 11'5"

Shower Room

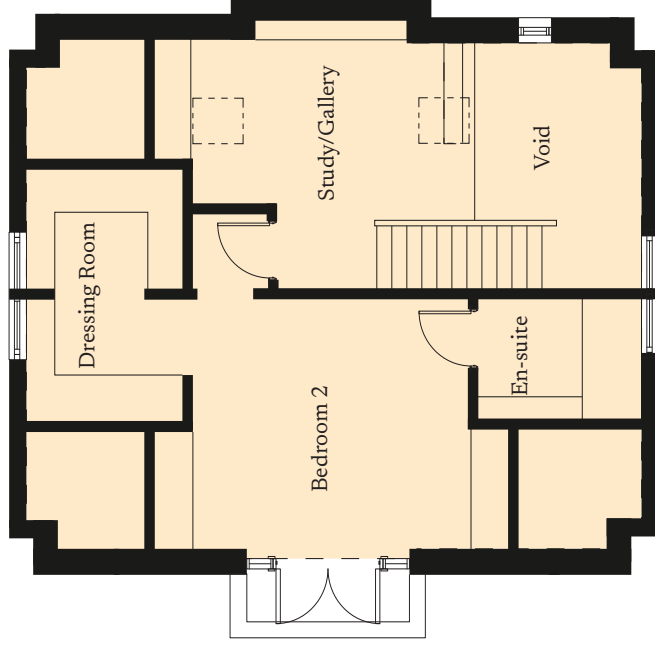
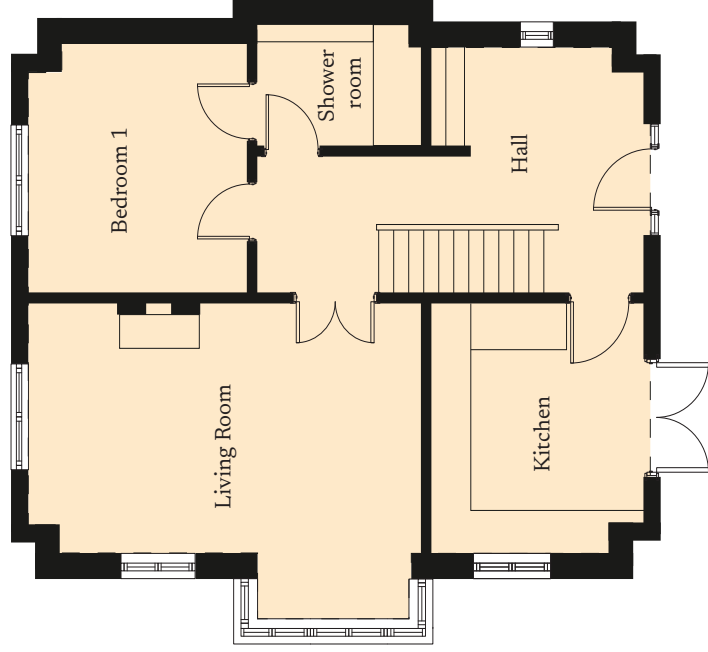
2286mm x 1706mm

7'5" x 5'6"

Study/Gallery

4114mm x 2407mm

13'5" x 7'9"



These particulars are intended to give a fair and substantially correct overall description.

Measurements have been taken at 1500mm skirting height.

All dimensions are approximate. Bedroom measurements include the wardrobe if applicable. Room measurements include bay windows if applicable.

Furniture layout is to give an indicative impression. Although all efforts have been made to ensure its accuracy at time of print dimensions, fixtures, fittings, finishes and specifications are subject to change without notice.

The properties are sold unfurnished.

