

19 Village Centre, £425,000

(Other charges apply)

RICHMOND
VILLAGES

Part of Bupa



2



2



EPC - C



2 bedroom ground floor apartment

Richmond Letcombe Regis are proud to present this two bedroom assisted living apartment, situated on the ground floor of our main village centre. The property has been updated and extremely well maintained by the current owner. The apartment is also in proximity of the main reception, which leads directly to the extensive communal facilities within the heart of the village.

Specification

- Spacious living room featuring a double-glazed south window overlooking the Village courtyard and a large integrated unit offering space for a TV and storage space.
- Modern fitted kitchenette with a range of fully fitted wall and base units with under cupboard lighting, stainless steel sink and drainer, integrated combination microwave with grill, integrated fridge with freezer compartment.
- Main bedroom with en-suite shower room.
- En-suite shower room with walk-in shower and fully fitted sanitary ware.
- Second bedroom with en-suite bathroom room.
- Entrance hall with storage cupboard and radiator.
- TV and satellite points*.
- Laid lawns and well stocked flower borders maintained by the Village Gardeners.
- Allocated parking space for one car

*Satellite subscription not included.

Important Notice: These particulars are intended to give a fair and substantially correct overall description. Other fees and charges apply, please contact the Village Advisers for further details. Properties are sold on a 125 year lease and this property has 110 years remaining.



01235 773970

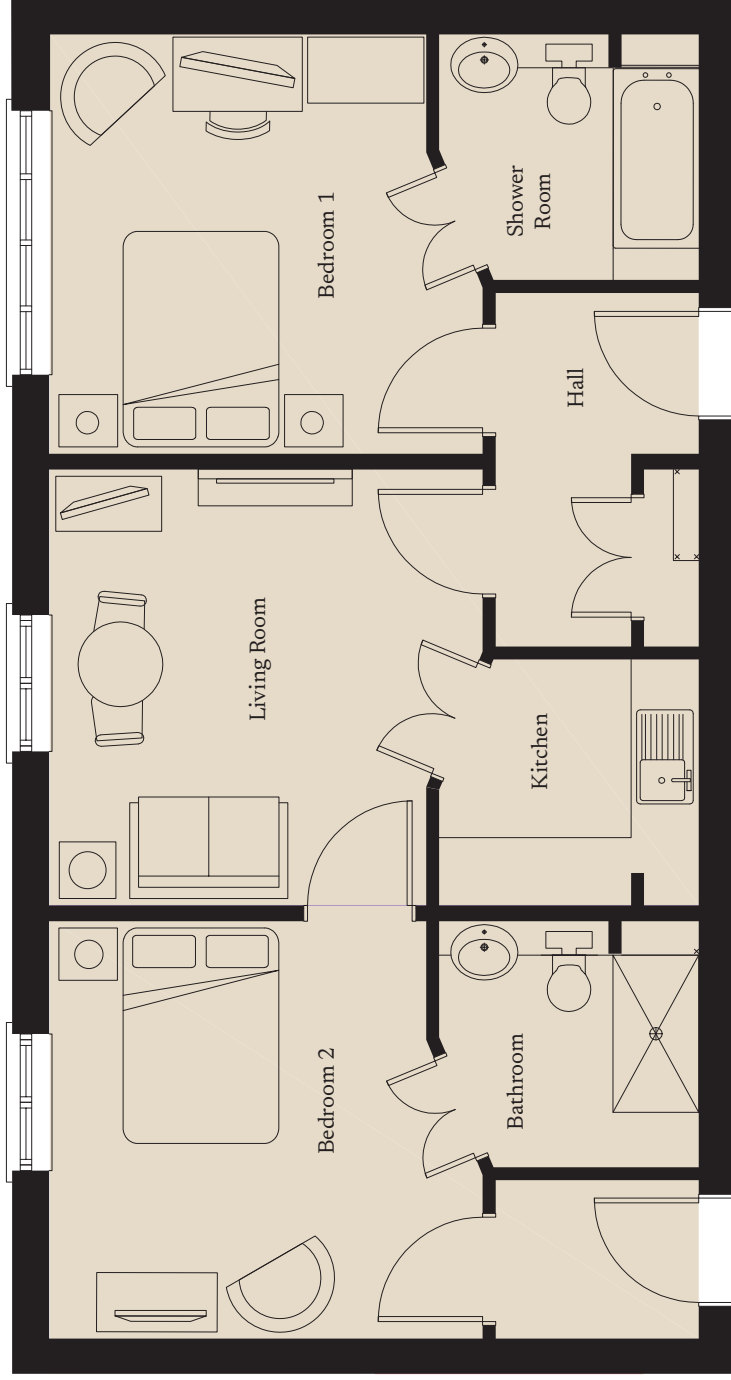
letcomberegis@richmond-villages.com

Richmond Villages Letcombe Regis,
South Street, Letcombe Regis, Oxfordshire OX12 9RG

19 Village Centre

Ground Floor

Kitchen
2300mm x 2180mm 7'7" x 7'2"
Living Room
6025mm x 3710mm 19'8" x 12'7"
Bedroom 1
4800mm x 3716mm 15'9" x 12'2"
Shower Room 1
2300mm x 2180mm 7'7" x 7'2"
Bedroom 2
4800mm x 3716mm 15'9" x 12'2"
Shower Room 2
2300mm x 2180mm 7'7" x 7'2"



These particulars are intended to give a fair and substantially correct overall description.

Measurements have been taken at 1500mm skirting height.

All dimensions are approximate. Bedroom measurements include the wardrobe if applicable. Room measurements include bay windows if applicable.

Furniture layout is to give an indicative impression. Although all efforts have been made to ensure its accuracy at time of print dimensions, fixtures, fittings, finishes and specifications are subject to change without notice.

The properties are sold unfurnished.

