

# 5 Milestones Close, £450,000

(Other charges apply)

RICHMOND  
VILLAGES

Part of Bupa



2



2



EPC - B



## 2 bedroom first floor apartment

A spacious 1st floor 2 bedroom apartment. At 1191 sqft, (110.6 sqm) the accommodation comprises of entrance hall, large sitting / dining room. Modern kitchen, main bedroom with en suite shower room, a second double bedroom and a guest bathroom. The apartment is situated close to the main village center and village facilities.

### Specification

- The apartment features a bright and airy living space with large windows showcasing stunning views over the surrounding fields, providing a scenic backdrop.
- The living and dining area leads to a fitted kitchen equipped with high-end appliances.
- Both bedrooms are generously sized, with the master bedroom including built-in wardrobes and an en-suite bathroom.
- Central heating radiators in all rooms. TV and satellite points\*.
- Well stocked flower borders and lawns maintained by the Village Gardeners.
- Allocated parking space for one car.



\*Satellite subscription not included.

Important Notice: These particulars are intended to give a fair and substantially correct overall description. Other fees and charges apply, please contact the Village Advisers for further details. Properties are sold on a 125 year lease and this property has 118 years remaining.

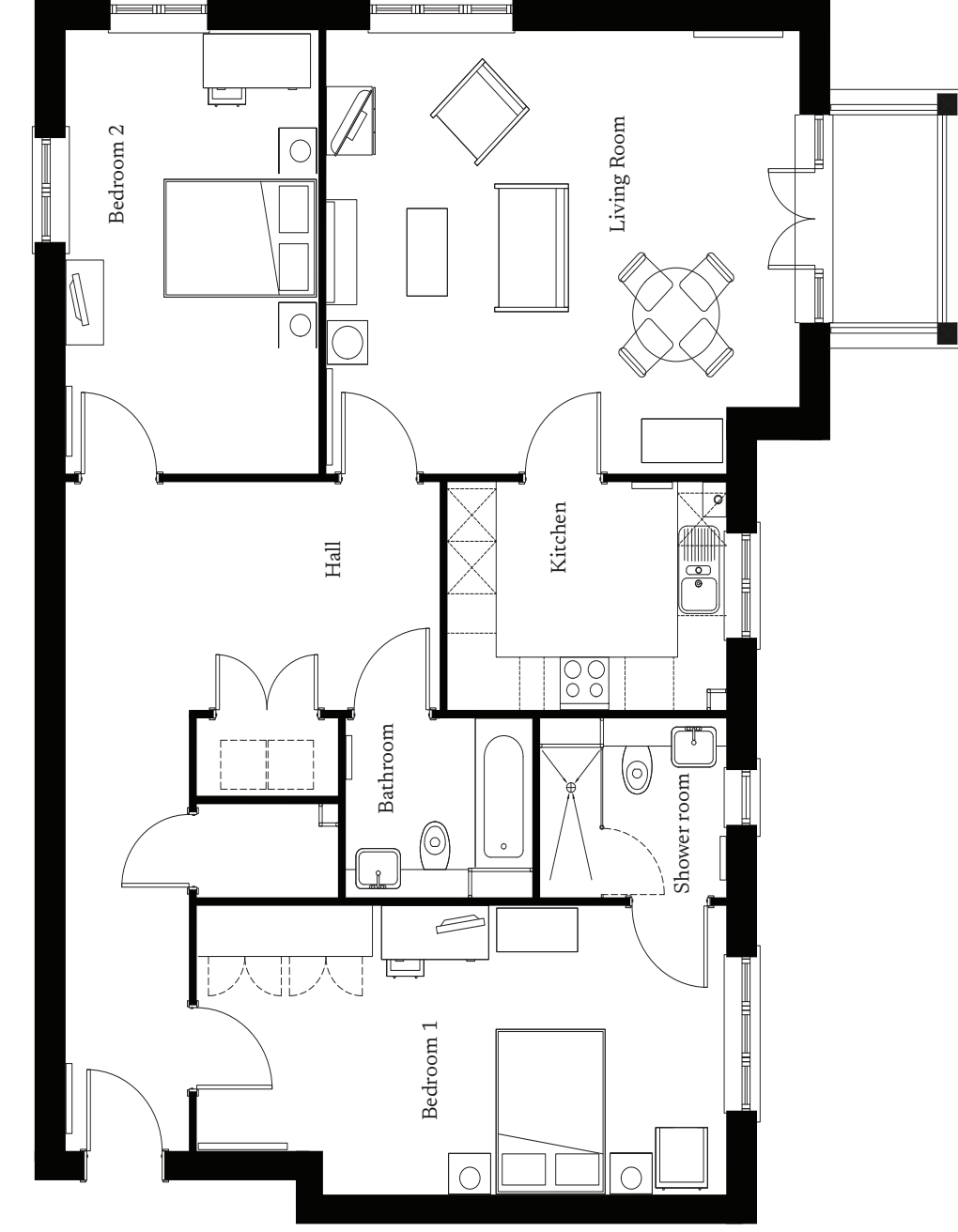
01332 794300

astonontrent@richmond-villages.com

Richmond Villages Aston-on-Trent,  
Richmond Drive, Aston-on-Trent, Derbyshire DE72 2EA

# 5 Milestones Close

First Floor | 110.6m<sup>2</sup> – 1191ft<sup>2</sup>



## Kitchen

3440mm x 2600mm

11'3" x 8'5"

## Sitting Room

5836mm x 5062mm

19'1" x 16'6"

## Bedroom 1

6526mm x 3300mm

21'4" x 10'8"

## Wet Room

2300mm x 2050mm

7'5" x 6'7"

## Bedroom 2

5062mm x 3118mm

16'6" x 10'2"

## Bathroom

2300mm x 2050mm

7'5" x 6'7"

These particulars are intended to give a fair and substantially correct overall description.

Measurements have been taken at 1500mm ceiling height.

All dimensions are approximate. Bedroom measurements include the wardrobe if applicable. Room measurements include bay windows if applicable.

Furniture layout is to give an indicative impression. Although all efforts have been made to ensure its accuracy at time of print dimensions, fixtures, fittings, finishes and specifications are subject to change without notice.

The properties are sold unfurnished.

