

# 55 Tuckers Court, £565,000

(Other charges apply)

RICHMOND  
VILLAGES

Part of Bupa

GF

2



2



EPC - B



## 2 bedroom ground floor apartment

A well-presented, bright and spacious 2-bedroom ground floor apartment. The apartment is situated close to the main village center and village facilities.

### Specification

- A tasteful living/dining room with French doors leading to a West-facing sunny patio area. Feature fireplace.
- The well-equipped fitted kitchen has wall and base units with under cupboard lighting, stainless steel sink and drainer, granite work surfaces, built-in eye level Neff double oven and ceramic hob and integrated Neff fridge freezer.
- The large principal bedroom is a light and airy space with plenty of room for storage with floor to ceiling fitted wardrobes and features a modern en-suite shower room.
- The second bedroom is also generously sized with TV and satellite extension points.
- Shower room with walk-in shower and fully fitted suite.
- Entrance hall with storage cupboards.
- TV and satellite points\*.
- Well stocked flower borders and lawns maintained by the Village Gardeners.
- Allocated parking space for one car.

\*Satellite subscription not included.

Important Notice: These particulars are intended to give a fair and substantially correct overall description. Other fees and charges apply, please contact the Village Advisers for further details. Properties are sold on a 125 year lease and this property has 115 years remaining.

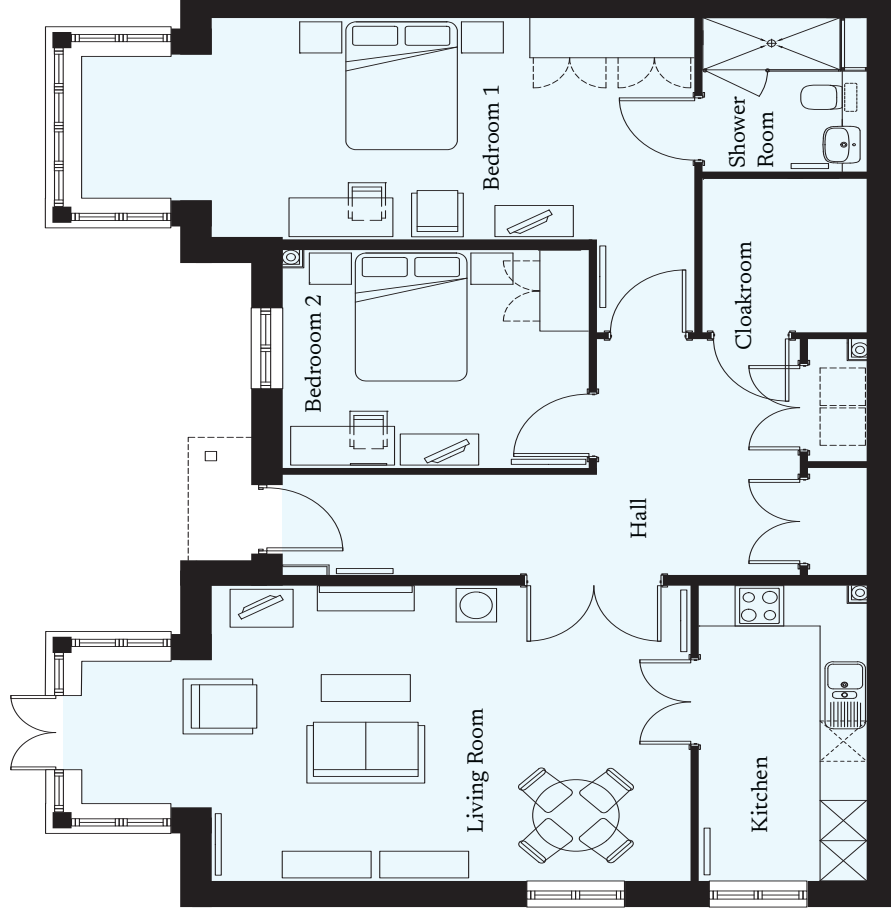
01993 894 000

witney@richmond-villages.com

Richmond Villages Witney,  
Coral Springs Way, Witney, Oxfordshire OX28 5DG

# 55 Tuckers Court

Ground Floor | 1158.4ft<sup>2</sup>



**Kitchen**

4428mm x 2100mm  
14'6" x 6'11"

**Living Room**

7590mm x 4428mm (into bay)  
24'11" x 14'6"

**Bedroom 1**

7611mm x 3315mm (into bay)  
25' x 10'11"

**Bedroom 2**

3790mm x 3253mm  
12'5" x 10'8"

**Shower Room**

2300mm x 2050mm  
7'7" x 6'9"

**Bathroom**

2300mm x 2050mm  
7'7" x 6'9"

These particulars are intended to give a fair and substantially correct overall description. Measurements have been taken at 1500mm ceiling height.

All dimensions are approximate. Bedroom measurements include the wardrobe if applicable. Room measurements include bay windows if applicable. Furniture layout is to give an indicative impression. Although all efforts have been made to ensure its accuracy at time of print dimensions, fixtures, fittings, finishes and specifications are subject to change without notice.

The properties are sold unfurnished.

