

30 The Avenue, £550,000*

(Other charges apply)

RICHMOND
VILLAGES

Part of Bupa

4F

2



2



EPC - B



2 bedroom fourth floor apartment

Richmond Villages Wood Norton are delighted to offer for resale this two-bedroom independent apartment with views over open Worcestershire countryside. The apartment offers easy access to communal facilities including reception, our Bredon restaurant, bar and coffee area, library, wellness spa with swimming pool, and numerous outdoor seating areas. Also benefitting from its own allocated parking space.

Specification

- The living room has views over open Worcestershire countryside. Remote-controlled electric fire.
- Modern fitted kitchen with range of wall and base units and integrated appliances including fridge/freezer, washer/dryer, dishwasher and oven and hob.
- The main bedroom is light and homely open space with fitted wardrobes. The bedroom features a bay window with views to the open countryside.
- The second bedroom is also generously sized a bay window with open views
- En-suite shower room with walk in shower and fitted sanitary ware
- TV and satellite points*.
- Well stocked flower borders and lawns maintained by the Village Gardeners.
- Allocated parking space for one car.

*Satellite subscription not included.

Important Notice: These particulars are intended to give a fair and substantially correct overall description. **Other fees and charges apply**, please contact the Village Advisers for further details. Properties are sold on a 125 year lease and this property has 120 years remaining.



01386 862 222

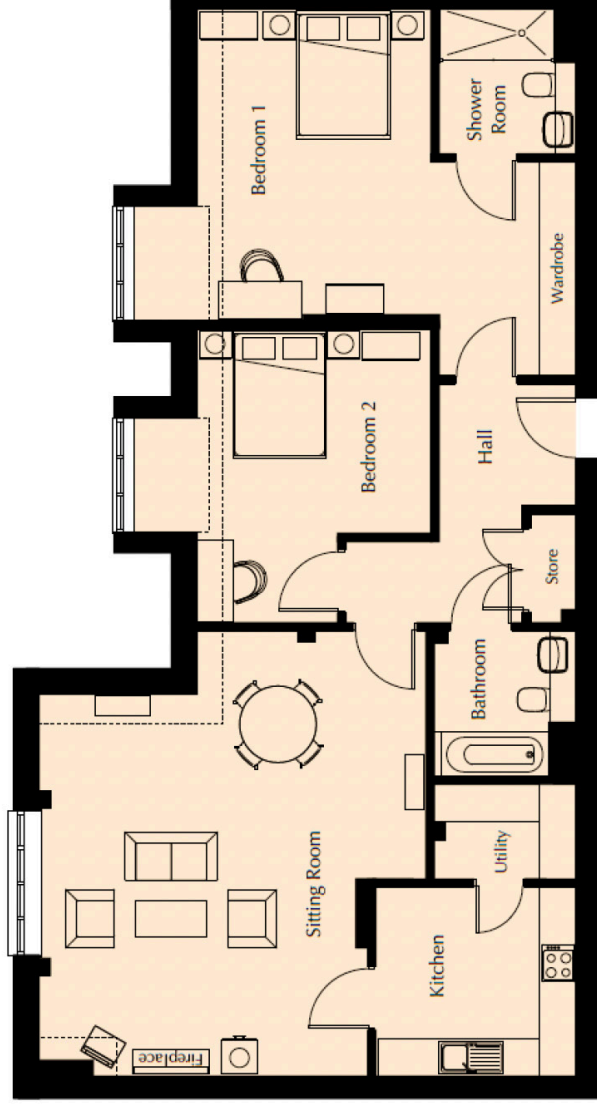
woodnorton@richmond-villages.com

Richmond Villages Wood Norton,
Evesham Road, Wood Norton, Evesham, Worcestershire WR11 4TY

30 The Avenue

Fourth Floor

Kitchen	3319mm x 2935mm 10'11" x 9'8"
Living Room	6948mm x 4988mm 22'10" x 16'4"
Bedroom 1	6886mm x 4920mm 22'7" x 16'2"
Shower Room	2300mm x 2180mm 7'7" x 7'2"
Bedroom 2	4595mm x 4559mm 15'1" x 14'11"
Bathroom	2300mm x 2180mm 7'7" x 7'2"
Utility	2259mm x 1509mm 7'5" x 4'11"



These particulars are intended to give a fair and substantially correct overall description.

Measurements have been taken at 1500mm skimming height.

All dimensions are approximate. Bedroom measurements include the wardrobe if applicable. Room measurements include bay windows if applicable.

Furniture layout is to give an indicative impression. Although all efforts have been made to ensure its accuracy at time of print dimensions, fixtures, fittings, finishes and specifications are subject to change without notice.

The properties are sold unfurnished.

