

# No. 6, Offers over £220,000

(Other charges apply)

RICHMOND  
VILLAGES

Part of Bupa

FF

2



1



EPC - D



## 2 bedroom first floor apartment

A lovely, bright 1st floor 2 bedroom apartment. At 641 sqft, the accommodation comprises of entrance hall, large sitting room, modern kitchenette, main bedroom, a second bedroom and shower room. The apartment is situated close to the main village center and village facilities.

### Specification

- The bright and welcoming living room is well proportioned, offering a double-glazed bay window and feature fireplace with attractive surround.
- The well-equipped fitted kitchen has wall and base units, stainless steel sink and drainer, ample work surfaces, oven, hob and integrated fridge freezer. There is also space for a small breakfast table.
- Large main bedroom with fitted wardrobes.
- Shower room with walk-in shower and fully fitted white suite.
- Second bedroom/office space.
- A convenient small hallway, with stairlift to the upper hallway and access to all rooms.
- Central heating radiators in all rooms. TV and satellite points\*.
- Well stocked flower borders and lawns maintained by the Village Gardeners.
- Allocated parking space for one car.

\*Satellite subscription not included.

Important Notice: These particulars are intended to give a fair and substantially correct overall description. Other fees and charges apply, please contact the Village Advisers for further details. Properties are sold on a 125 year lease and this property has 112 years remaining.

01270 629 080

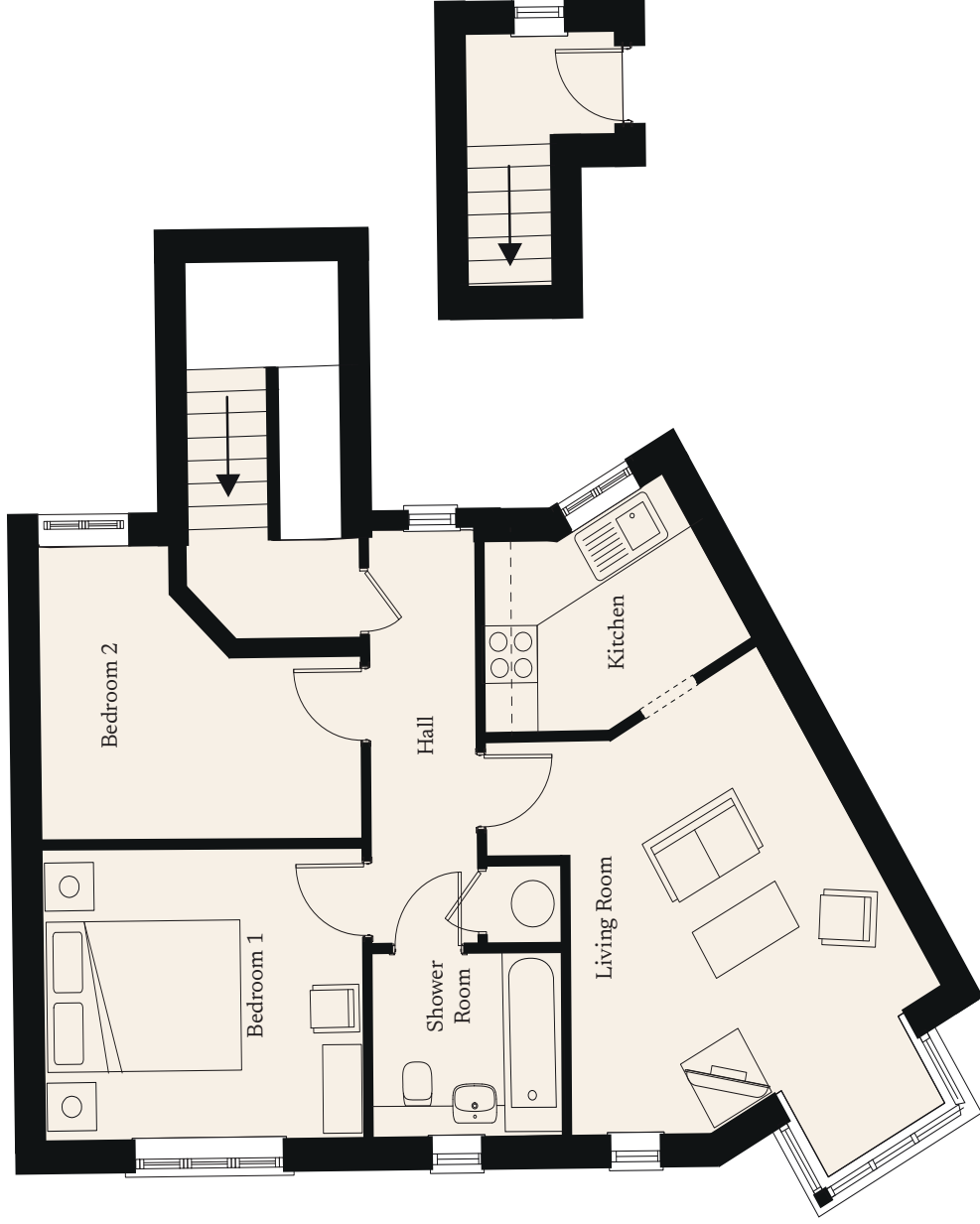
nantwich@richmond-villages.com

Richmond Villages Nantwich,  
St Joseph's Way, Nantwich, Cheshire CW5 6LZ

# No. 6

First Floor | 641ft<sup>2</sup>

- Kitchen**  
2987mm x 2042mm  
9'8" x 6'7"
- Living Room**  
4176mm x 3718mm  
13'7" x 12'2"
- Bedroom 1**  
3383mm x 3048mm  
11'11" x 10'
- Shower Room**  
2159mm x 1955mm  
7'1" x 6'5"
- Bedroom 2**  
3383mm x 3048mm  
11'11" x 7'5"



These particulars are intended to give a fair and substantially correct overall description. Measurements have been taken at 1500mm skirting height. All dimensions are approximate. Bedroom measurements include the wardrobe if applicable. Room measurements include bay windows if applicable. Furniture layout is to give an indicative impression. Although all efforts have been made to ensure its accuracy at time of print dimensions, fixtures, fittings and specifications are subject to change without notice. The properties are sold unfurnished.

