

# Apartment 37, £315,000

(Other charges apply)

RICHMOND  
VILLAGES

Part of Bupa

SF

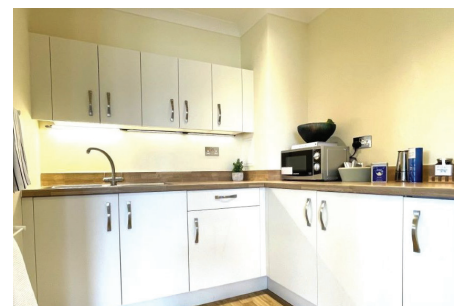
1



1



EPC - C

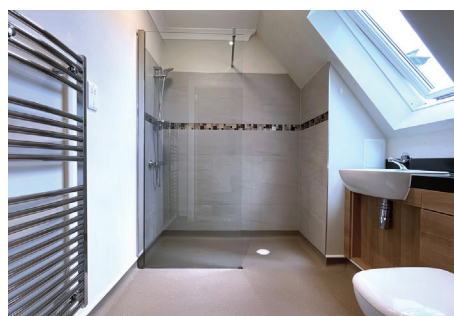


## 1 bedroom second floor apartment

A lovely one-bedroom, second floor property, benefitting from its own balcony. The apartment is situated close to the main village center and village facilities.

### Specification

- The bright living room is well proportioned, allowing plenty of space to relax and entertain family or friends, with French doors leading to a private balcony.
- The fitted kitchenette has wall and base units with under cupboard lighting, stainless steel sink and drainer and integrated fridge.
- The bedroom is a light and airy space with plenty of room for storage. With direct access to the modern en-suite shower room.
- The contemporary shower room has a WC and wash hand basin set within a fully fitted vanity unit
- Entrance hall with storage cupboard.
- TV and satellite points\*.
- Well stocked flower borders and lawns maintained by the Village Gardeners.
- Allocated parking space for one car.



\*Satellite subscription not included.

Important Notice: These particulars are intended to give a fair and substantially correct overall description. Other fees and charges apply, please contact the Village Advisers for further details. Properties are sold on a 125 year lease and this property has 115 years remaining.

01993 894 000

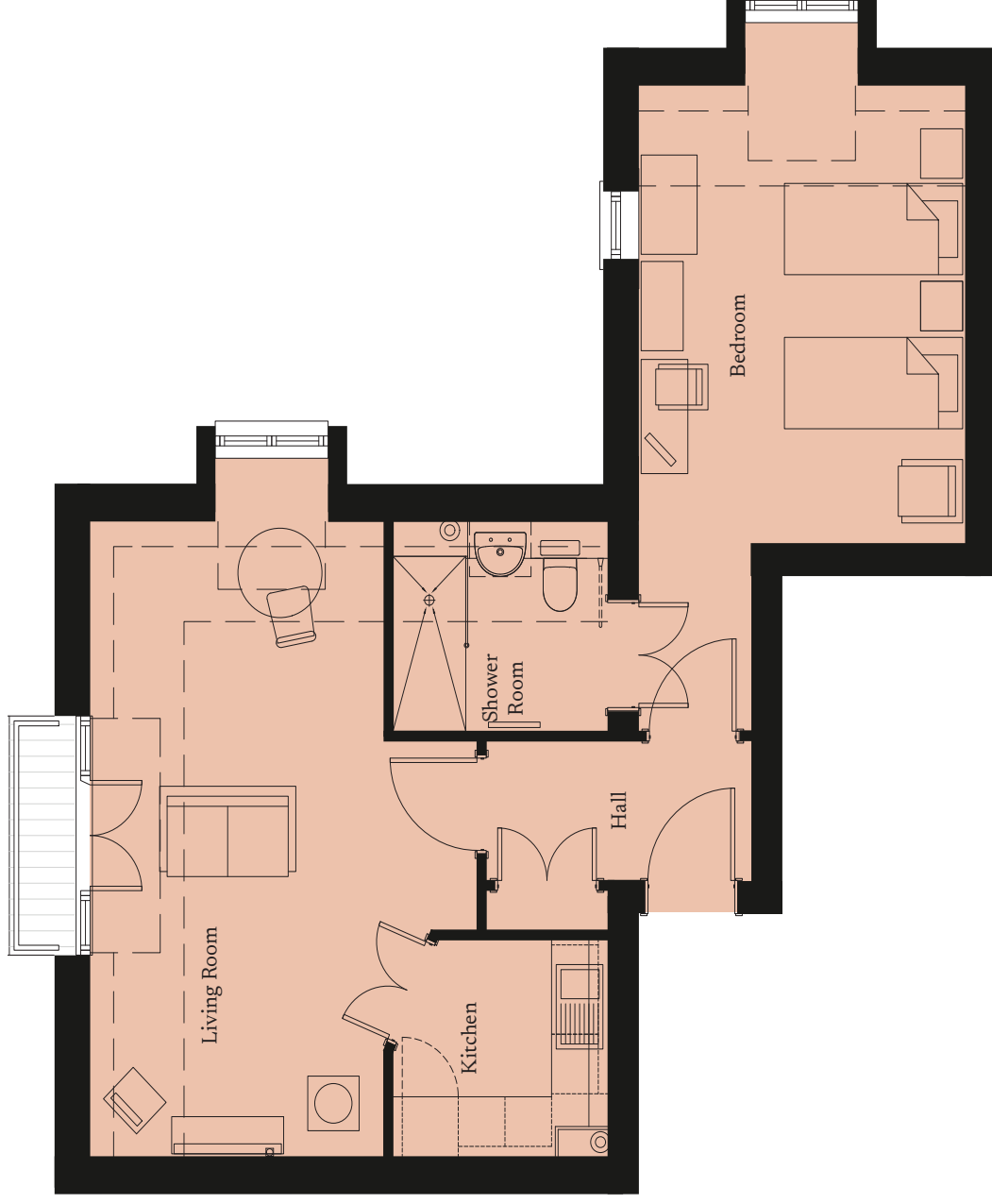
witney@richmond-villages.com

Richmond Villages Witney,  
Coral Springs Way, Witney, Oxfordshire OX28 5DG

# Apartment 37

Second Floor | 597ft<sup>2</sup>

- Kitchen**  
2300mm x 2180mm  
7'6" x 7'2"
- Living Room**  
6145mm\* x 4145mm  
20'1" x 13'7"
- Bedroom**  
4353mm\* x 3495mm  
14'3" x 11'6"
- Shower Room**  
2300mm x 2180mm  
7'6" x 7'2"



These particulars are intended to give a fair and substantially correct overall description. Measurements have been taken at 1500mm skirting height. All dimensions are approximate. Bedroom measurements include the wardrobe if applicable. Room measurements include bay windows if applicable. Furniture layout is to give an indicative impression. Although all efforts have been made to ensure its accuracy at time of print dimensions, fixtures, fittings, finishes and specifications are subject to change without notice. The properties are sold unfurnished.

