

18 Village Centre, £1,833 pcm*

(Other charges apply)

RICHMOND
VILLAGES

Part of Bupa



1



1



EPC - C



1 bedroom first floor apartment

We are delighted to offer for rent this spacious, first floor one-bedroom apartment. The property is perfectly situated within easy access of our outstanding on-site facilities including the restaurant, café bar, modern community clubhouse, wellness spa with gym, pool and Temple Spa treatments, landscaped gardens and woodland walks, croquet lawn and garden terrace.

Specification

- Spacious and bright living room with modern remote controlled electric fire with feature surround.
- The well-equipped, fitted kitchenette adjoins the living space and has been superbly designed to offer a range of eye and base level units with generous worktops. There is an undercounter fridge stainless steel sink, and soft under cupboard lighting.
- Spacious master bedroom with en-suite shower room
- En-suite shower room with walk-in shower and fully fitted white suite.
- Entrance hall with large storage cupboard
- Central heating radiators in all rooms. TV and satellite points*.
- Well stocked flower borders and lawns maintained by the Village Gardeners.
- Allocated parking space for one car.



*Satellite subscription not included.

Important Notice: These particulars are intended to give a fair and substantially correct overall description. **Other fees and charges apply**, please contact the Village Advisers for further details. Tenancy is for a minimum of 6 months and then will default to a monthly contract.

01332 794300

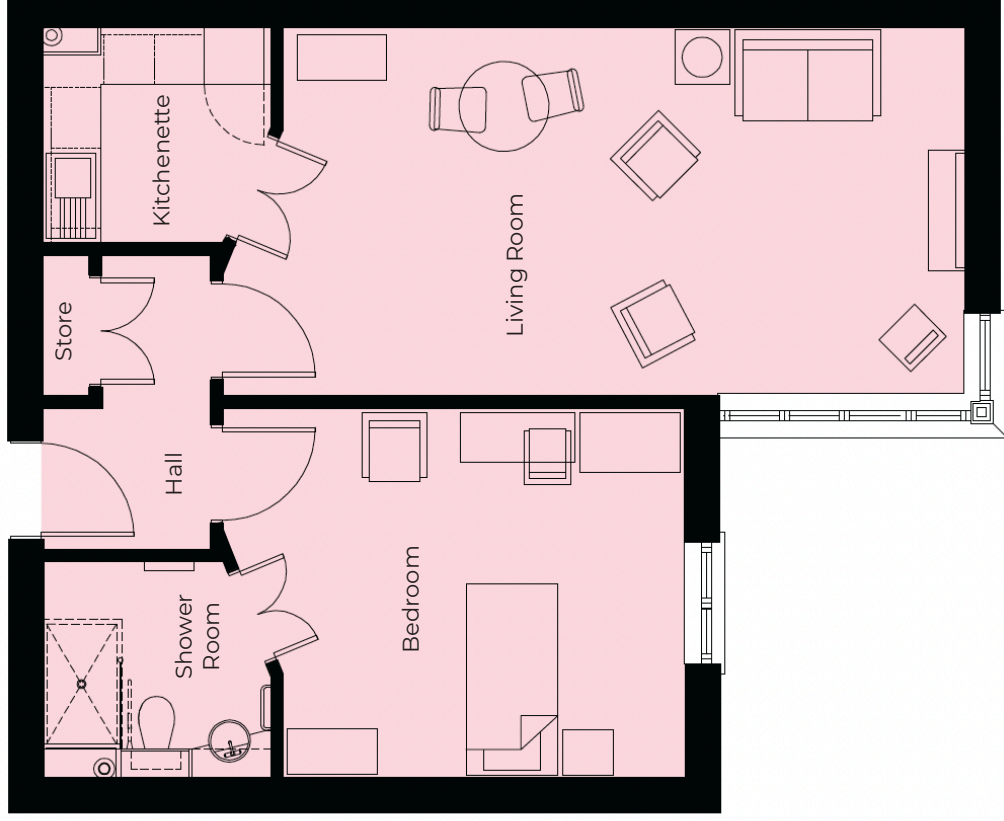
astonontrent@richmond-villages.com

Richmond Villages Aston-on-Trent,
Richmond Drive, Aston-on-Trent, Derbyshire DE72 2EA

18 Village Centre

First Floor | 58.94m² – 634ft²

Kitchen	2300mm x 2180mm 7'7" x 7'2"
Sitting Room	6830mm x 3710mm 22'5" x 12'2"
Bedroom	4035mm x 3710mm 13'3" x 12'2"
Shower Room	2300mm x 2180mm 7'7" x 7'2"



These particulars are intended to give a fair and substantially correct overall description. Measurements have been taken at 1500mm skirting height. All dimensions are approximate. Bedroom measurements include the wardrobe if applicable. Room measurements include bay windows if applicable. Furniture layout is to give an indicative impression. Although all efforts have been made to ensure its accuracy at time of print dimensions, fixtures, fittings, finishes and specifications are subject to change without notice. The properties are sold unfurnished.

