

# 40 Village Centre, £260,000\*

(Other charges apply)

RICHMOND  
VILLAGES

Part of Bupa

2F

2



1



EPC - B



## 2 bedroom second floor apartment

Richmond Villages Northampton is delighted to offer this well presented, 2 bedroom re-sale west facing apartment. Situated on the second floor of the main village centre with lovely views. The apartment comprises entrance hall, living room, kitchenette and two bedrooms and a ensuite shower room.

### Specification

- Spacious and modern lounge with double French doors to balcony area.
- A well-equipped kitchenette with wall and base units, stainless steel sink and drainer, work surfaces, integrated fridge.
- Spacious double bedroom with double glazed windows. Generously sized space with plenty of room for storage.
- The second bedroom is also generously sized with TV and satellite extension points.
- Recently decorated throughout with new carpets.
- Lovely on-site facilities
- Centred around community & wellbeing
- Beautifully manicured gardens
- Allocated parking space for one car
- Council band E



\*Satellite subscription not included.

Important Notice: These particulars are intended to give a fair and substantially correct overall description. **Other fees and charges apply**, please contact the Village Advisers for further details. Properties are sold on a 125 year lease and this property has 112 years remaining.

01604 432 600

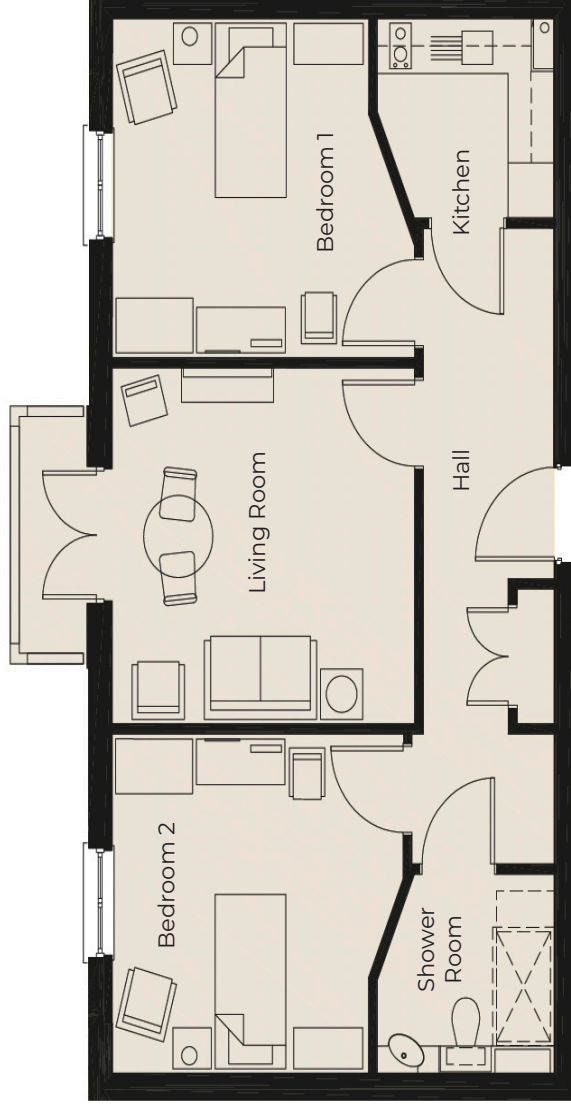
[norhampton@richmond-villages.com](mailto:norhampton@richmond-villages.com)

Richmond Villages Northampton,  
Bridge Meadow Way, Grange Park, Northampton, NN4 5EB

# 40 Village Centre

## Second Floor

<b>Kitchen</b>	2190mm x 2225mm 7'2" x 7'3"
<b>Living Room</b>	5151mm x 3718mm 16'9" x 12'2"
<b>Bedroom 1</b>	3931mm x 3749mm 12'9" x 12'3"
<b>Shower Room</b>	190mm x 2225mm 7'2" x 7'3"
<b>Bedroom 2</b>	3718mm x 3749mm 12'2" x 12'3"



These particulars are intended to give a fair and substantially correct overall description.

Measurements have been taken at 1500mm skimming height.

All dimensions are approximate. Bedroom measurements include the wardrobe if applicable. Room measurements include bay windows if applicable.

Furniture layout is to give an indicative impression. Although all efforts have been made to ensure its accuracy at time of print dimensions, fixtures, fittings, finishes and specifications are subject to change without notice.

The properties are sold unfurnished.

