

31 Village Suite, £199,500*

(Other charges apply)

**RICHMOND
VILLAGES**

Part of Bupa

3F

1



1



EPC -B



1 bedroom third floor apartment

Richmond Villages Wood Norton are delighted to offer for resale this one-bedroom independent apartment with balconies from Living room and master bedroom with views over open Worcestershire countryside. The apartment offers easy access to communal facilities including reception, our Bredon restaurant, bar and coffee area, library, wellness spa with swimming pool, and numerous outdoor seating areas. Also benefitting from its own allocated parking space.

Specification

- Sitting Room with double glazed window overlooking courtyard and remote-controlled electric fire with decorative marble surround
- Modern fitted kitchenette with under cupboard lighting and built-in fridge with freezer compartment
- Master bedroom with double glazed window overlooking courtyard
- En-suite shower room with walk-in shower, fitted sanitary ware and heated towel rail
- Entrance hall with storage cupboard
- Under floor heating
- TV and satellite points*
- Well stocked flower borders and lawns maintained by the Village Gardeners
- Allocated parking space for one car



*Satellite subscription not included.

Important Notice: These particulars are intended to give a fair and substantially correct overall description. **Other fees and charges apply**, please contact the Village Advisers for further details. Properties are sold on a 125 year lease and this property has 120 years remaining.

01386 366 039

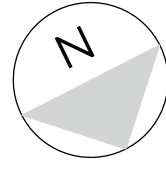
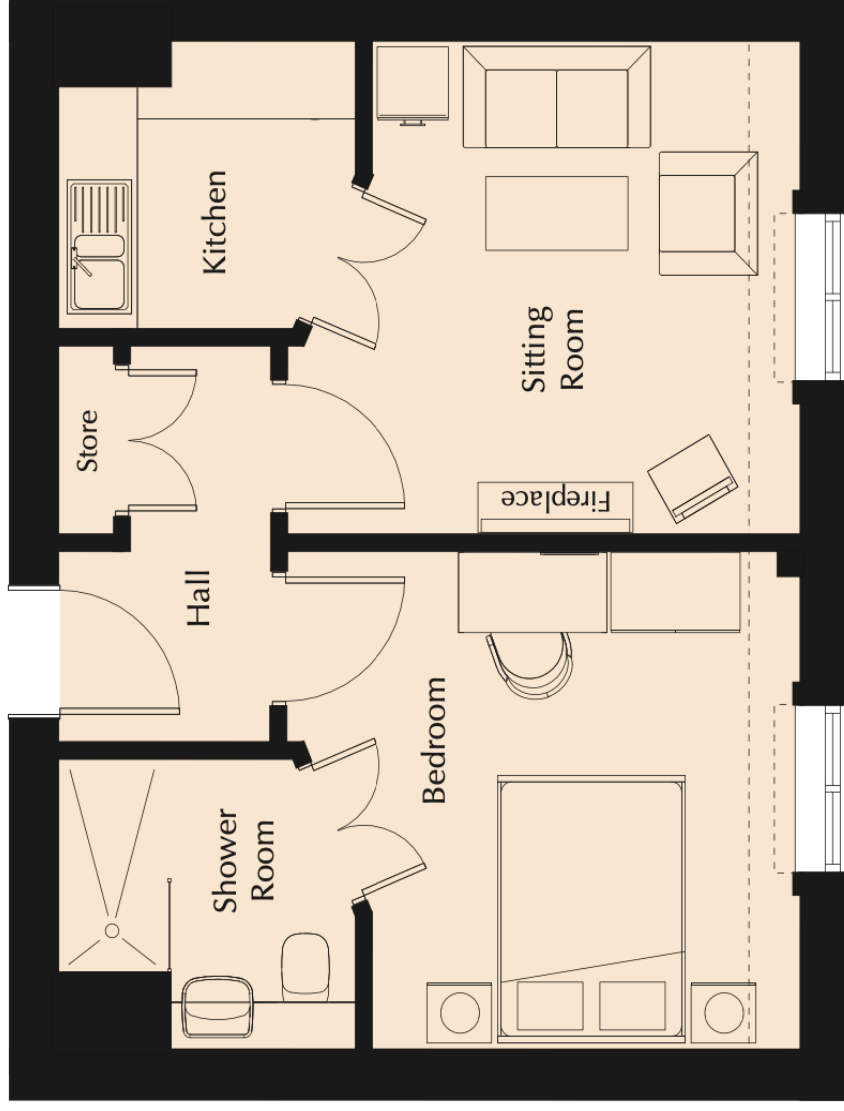
woodnorton@richmond-villages.com

Richmond Villages Wood Norton,
Evesham Road, Evesham, WR11 4TY

31 Village Suite

Floor 3 | 42.01m² - 452.19ft²

- Kitchen**
2300mm x 2130mm
7'7" x 7'
- Sitting Room**
3947mm x 3717mm
12'11" x 12'2"
- Bedroom**
3682mm x 3316mm
12'1" x 10'11"
- Shower Room**
2300mm x 2180mm
7'7" x 7'2"



These particulars are intended to give a fair and substantially correct overall description. Measurements have been taken at 1500mm skimming height. All dimensions are approximate. Bedroom measurements include the wardrobe if applicable. Room measurements include bay windows if applicable. Furniture layout is to give an indicative impression. Although all efforts have been made to ensure its accuracy at time of print dimensions, fixtures, fittings, finishes and specifications are subject to change without notice. The properties are sold unfurnished.