

Apartment 8 – £250,000

RICHMOND
VILLAGES
Part of Bupa

(Other charges apply)



1



1



EPC - C



1 bedroom ground floor apartment

A charming, ground-floor one-bedroom assisted living apartment at 505 sqft. The apartment is situated close to the main village center and village facilities.

Specification

- The tasteful living room is the perfect space to relax. With French doors leading to private, patio area an electric fire with Bath stone-effect surround the room can feel cosy all year round.
- The well-equipped fitted kitchen has wall and base units with under cupboard lighting, stainless steel sink and drainer and integrated fridge.
- The main bedroom is a light and airy space with plenty of room for storage and access to the modern en-suite shower room.
- The contemporary shower room has a WC and wash hand basin set within a fully fitted vanity unit. Heated towel rail and downlights to ceiling.
- Entrance hall with storage cupboard
- Double glazing and central heating radiators in all rooms
- TV and satellite points*
- Outside, residents have access to beautifully maintained grounds, carefully tended to by our village gardeners.
- Allocated parking space for one car



*Satellite subscription not included.

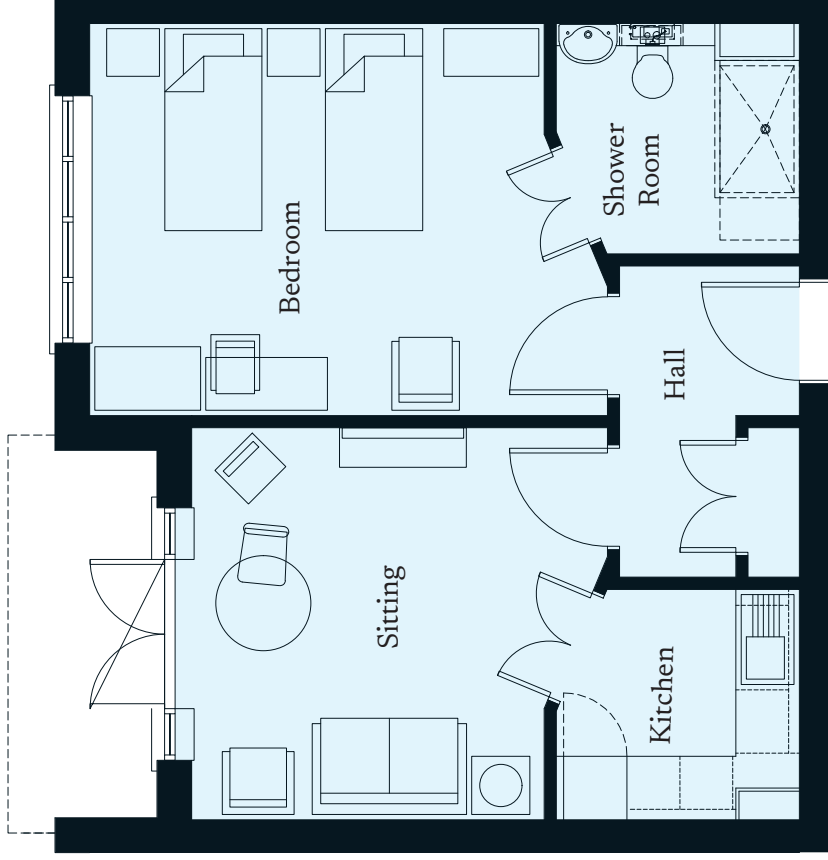
Important Notice: These particulars are intended to give a fair and substantially correct overall description. Other fees and charges apply, please contact the Village Advisers for further details. Properties are sold on a 125 year lease and this property has 116 years remaining.

01993 894000
witney@richmond-villages.com

Richmond Villages Witney
Coral Springs Way, Witney, Oxfordshire OX28 5DG

Apartment 8

Ground Floor | 46.9m² – 505ft²



Kitchen	2300mm x 2180mm 7'7" x 7'2"
Sitting Room	3935mm x 3710mm 12'11" x 12'2"
Bedroom	4900mm x 3710mm 16'1" x 12'2"
Shower Room	2300mm x 2180mm 7'7" x 7'2"

These particulars are intended to give a fair and substantially correct overall description.

Measurements have been taken at 1500mm skelling height.

All dimensions are approximate. Bedroom measurements include the wardrobe if applicable. Room measurements include bay windows if applicable.

Furniture layout is to give an indicative impression. Although all efforts have been made to ensure its accuracy at time of print dimensions, fixtures, fittings, finishes and specifications are subject to change without notice.

The properties are sold unfurnished.

