

# 49 Tuckers Court, £475,000\*

(Other charges apply)

**RICHMOND  
VILLAGES**

*Part of Bupa*

GF

2



1



EPC - B



## 2 bedroom ground floor apartment

Richmond Villages Witney are delighted to offer this well-presented resale two-bedroom apartment. The property is perfectly situated within easy access of our outstanding on-site facilities including the restaurant, café bar, reception, library, wellness spa, beautifully manicured gardens and bowling green.

### Specification

- Independent Living
- The tastefully designed living /dining room is well proportioned. The room is flooded with natural light and overlooks the beautifully manicured grounds and boundary.
- The well-equipped, fitted kitchen adjoins the living space and has been well designed to offer a range of eye and base level units with granite worktops and glass splashback.
- Spacious main bedroom with en-suite shower room
- The second bedroom is also generously sized with TV and satellite extension points.
- Outstanding on-site facilities including Luxury Wellness Spa
- Centred around community & wellbeing
- Beautifully manicured grounds
- Allocated parking space for one car
- Situated within the beautiful town of Witney



\*Satellite subscription not included.

Important Notice: These particulars are intended to give a fair and substantially correct overall description. **Other fees and charges apply**, please contact the Village Advisers for further details. Properties are sold on a 125 year lease and this property has 115 years remaining.

**01993 894 006**

witney@richmond-villages.com

**Richmond Villages Witney,**  
Coral Springs Way, Witney, OX28 5DG

# 49 Tuckers Court

Ground Floor | 89.62m<sup>2</sup> – 964.7ft<sup>2</sup>

## Kitchen

3648mm x 3000mm

12' x 9'10"

## Sitting Room

6001mm x 4680mm (into bay)

19'8" x 14'4"

## Bedroom 1

4440mm x 3390mm

14'7" x 11'1"

## Shower Room

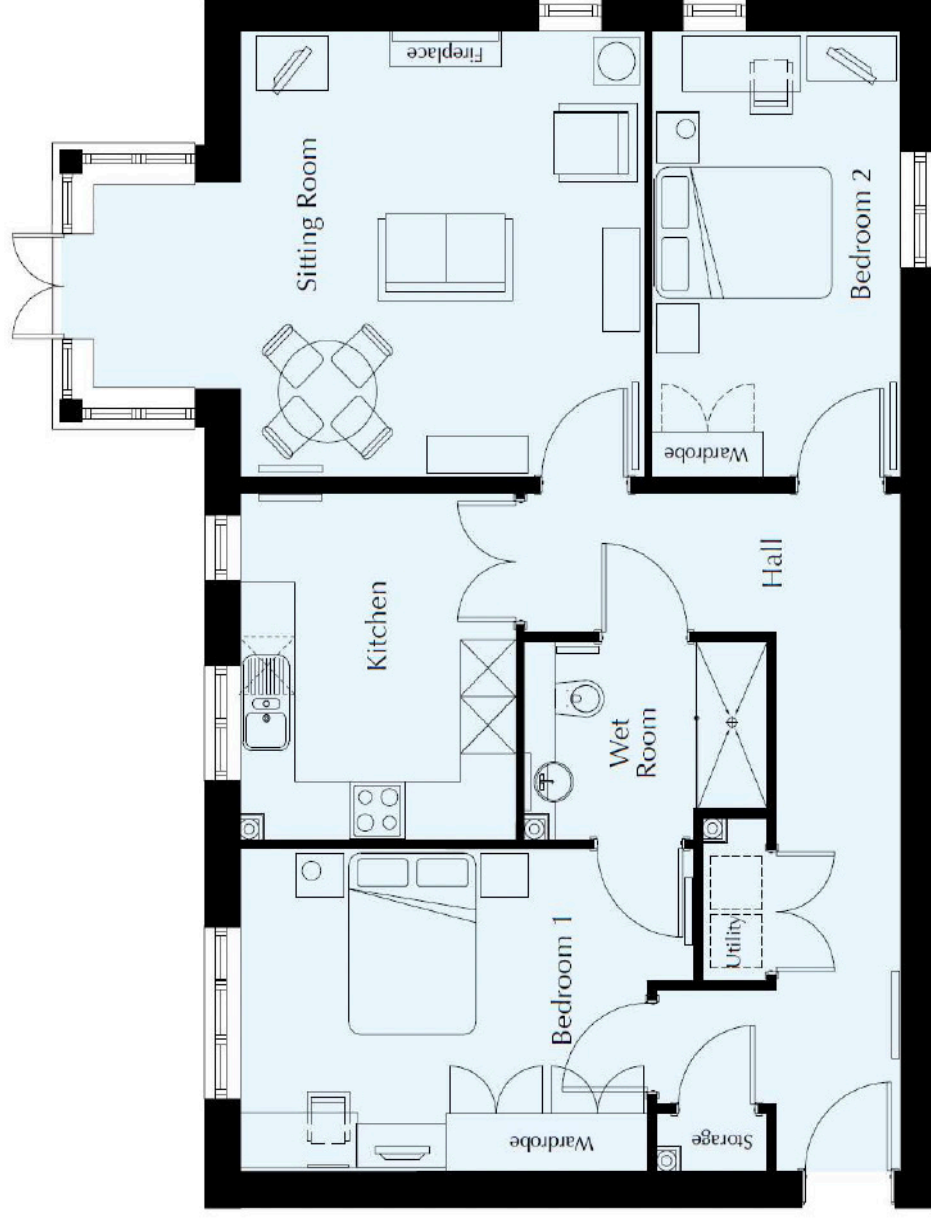
2640mm x 2078mm

8'8" x 6'10"

## Bedroom 2

4680mm x 2700mm

15'4" x 8'10"



These particulars are intended to give a fair and substantially correct overall description.

Measurements have been taken at 1500mm skelling height.

All dimensions are approximate. Bedroom measurements include the wardrobe if applicable. Room measurements include bay windows if applicable.

Furniture layout is to give an indicative impression. Although all efforts have been made to ensure its accuracy at time of print dimensions, fixtures, fittings, finishes and specifications are subject to change without notice.

The properties are sold unfurnished.

