

# 9 The Avenue, offers on £375,000

(Other charges apply)

RICHMOND  
VILLAGES

Part of Bupa

1F

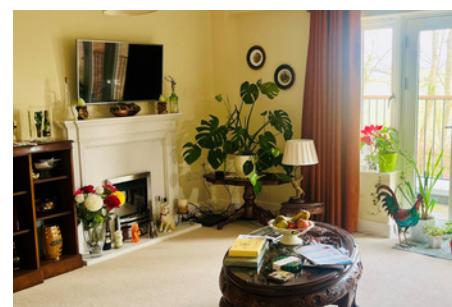
1



1



EPC -B



## 1 bedroom first floor apartment

Richmond Villages Wood Norton are delighted to offer for resale this one- bedroom independent apartment with balconies from Living room and master bedroom with views over open Worcestershire countryside. The apartment offers easy access to communal facilities including reception, our Bredon restaurant, bar and coffee area, library, wellness spa with swimming pool, and numerous outdoor seating areas. Also benefitting from its own allocated parking space.

### Specification

- Spacious living room with double glazed patio doors to balcony with open views and remote-controlled electric fire
- Modern fitted kitchen with under cupboard lighting, Neff appliances and granite work surfaces
- Master bedroom with patio doors to additional balcony with views to open countryside
- En-suite shower room with walk in shower and fitted sanitary ware Jack and Jill doors to bedroom and entrance hall.
- Entrance hall with utility cupboard, housing washing machine, tumble drier and further storage.
- Allocated parking space for one car
- 



\*Satellite subscription not included.

Important Notice: These particulars are intended to give a fair and substantially correct overall description. **Other fees and charges apply**, please contact the Village Advisers for further details. Properties are sold on a 125 year lease and this property has 120 years remaining.

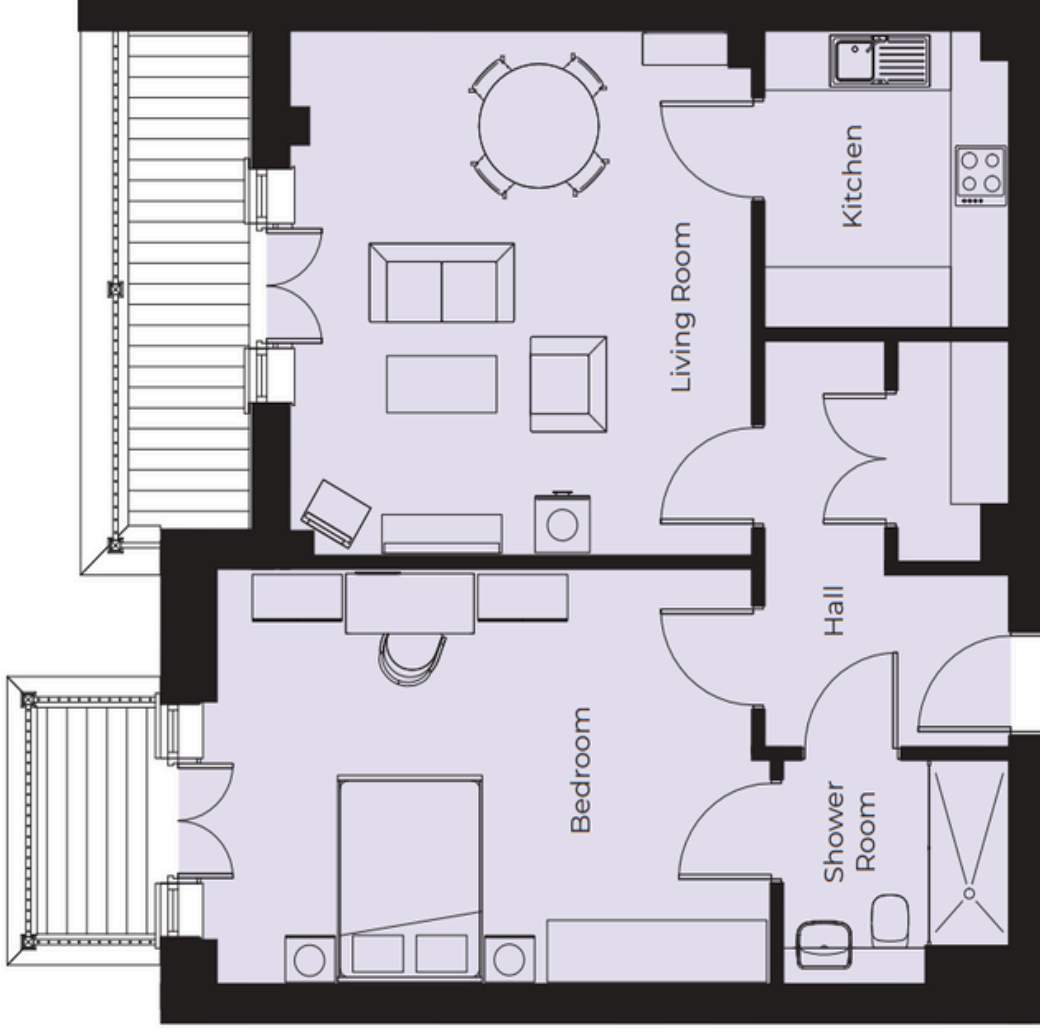
01386 366 039

woodnorton@richmond-villages.com

Richmond Villages Wood Norton,  
Evesham Road, Evesham, WR11 4TY

# 9 The Avenue

Floor 1 | 68.91m<sup>2</sup> - 741.74ft<sup>2</sup>



- Kitchen**  
2930mm x 2430mm  
9'7" x 8'
- Living Room**  
5168mm x 4623mm  
16'11" x 15'2"
- Bedroom**  
5698mm x 3948mm  
18'8" x 12'11"
- Shower Room**  
2300mm x 2180mm  
7'7" x 7'2"

These particulars are intended to give a fair and substantially correct overall description. Measurements have been taken at 1500mm skelling height. All dimensions are approximate. Bedroom measurements include the wardrobe if applicable. Room measurements include bay windows if applicable. Furniture layout is to give an indicative impression. Although all efforts have been made to ensure its accuracy at time of print dimensions, fixtures, fittings, finishes and specifications are subject to change without notice. The properties are sold unfurnished.

