

9 Abingdon, £400,000

(Other charges apply)

RICHMOND
VILLAGES

Part of Bupa

GF

2



2



EPC - C



2 bedroom ground floor apartment

Richmond Villages are pleased to offer for resale this spacious, two bedroom, ground-floor apartment in excellent condition with South-facing patio and beautiful views over the inner gardens of the retirement village.

Specification

- Spacious living/dining room with French patio doors leading to South-facing patio area. Real flame remote controlled gas fire with feature fire surround.
- Modern fitted kitchen with under cupboard lighting and integrated appliances including: electric oven, ceramic hob, extractor fan, dishwasher, fridge freezer, washer dryer and microwave.
- Main bedroom with built in oak wardrobes.
- Second bedroom with built in wardrobes.
- En-suite shower room with fitted white suite.
- Shower room with walk in shower, fitted white suite and heated towel rail.
- Entrance hall with storage cupboards.
- Utility room.
- TV and satellite points*.
- Well stocked flower borders and lawns maintained by the Village Gardeners.
- Allocated parking space for one car.



*Satellite subscription not included.

Important Notice: These particulars are intended to give a fair and substantially correct overall description. Other fees and charges apply, please contact the Village Advisers for further details. Properties are sold on a 125 year lease and this property has 111 years remaining.

01604 432 600

northampton@richmond-villages.com

Richmond Villages Northampton,
Bridge Meadow Way, Grange Park, Northampton, NN4 5EB

9 Abingdon

Ground Floor

Kitchen

3750mm x 2400mm

12'4" x 7'10"

Sitting Room

6360mm x 5636mm

20'10" x 18'6"

Main Bedroom

4110mm x 4085mm

13'6" x 13'5"

Bathroom

2300mm x 2050mm

7'7" x 6'9"

Bedroom 2

4190mm x 3150mm

13'9" x 10'4"

Shower Room

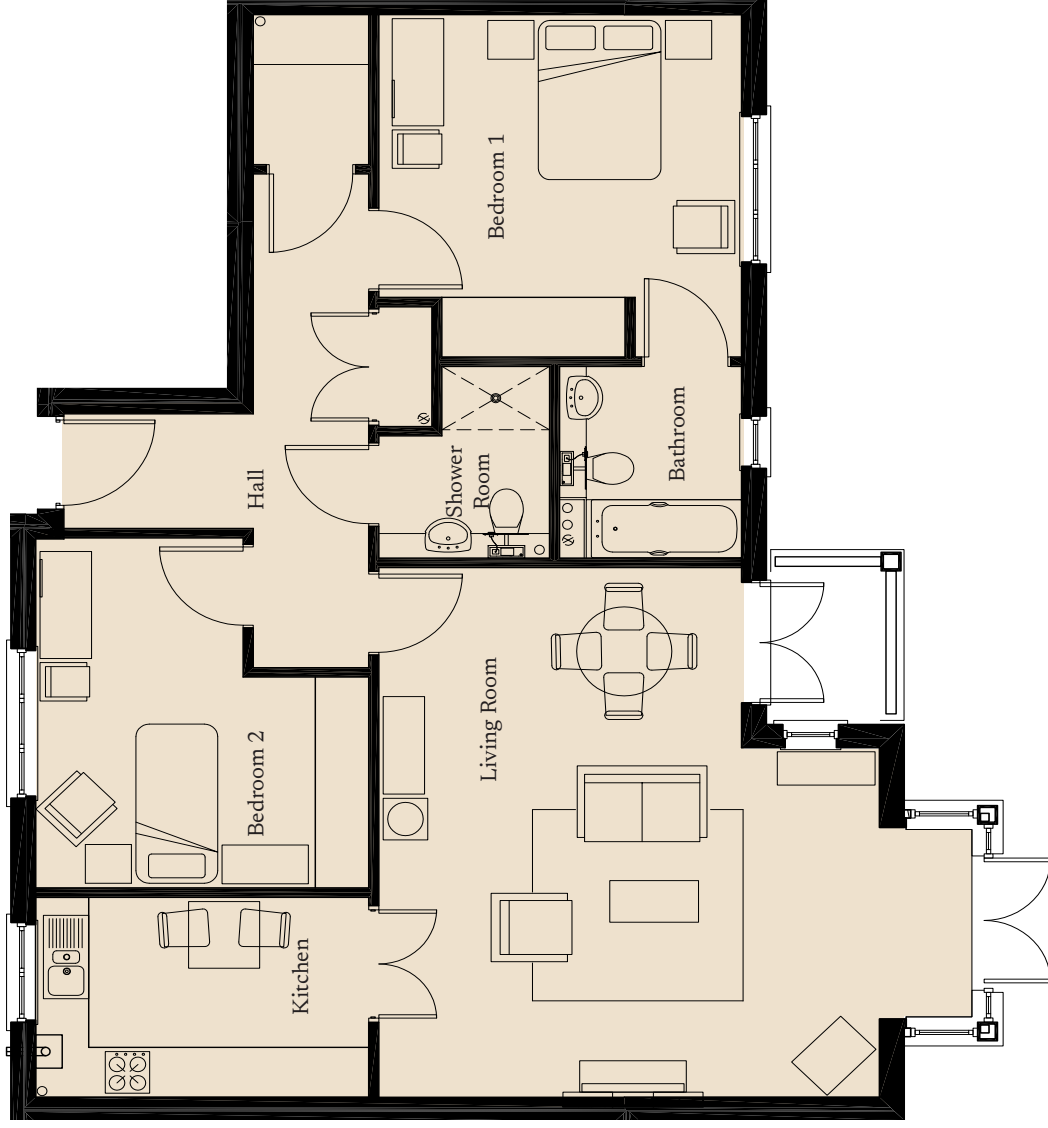
2300mm x 1922mm

7'7" x 6'4"

Utility Room

1800mm x 1300mm

5'11" x 4'3"



These particulars are intended to give a fair and substantially correct overall description. Measurements have been taken at 1500mm ceiling height.

All dimensions are approximate. Bedroom measurements include the wardrobe if applicable. Room measurements include bay windows if applicable.

Furniture layout is to give an indicative impression. Although all efforts have been made to ensure its accuracy at time of print dimensions, fixtures, fittings, finishes and specifications are subject to change without notice.

The properties are sold unfurnished.