

15 Boveney, £115,000*

(Other charges apply)

**RICHMOND
VILLAGES**

Part of Bupa



1



1



EPC - C

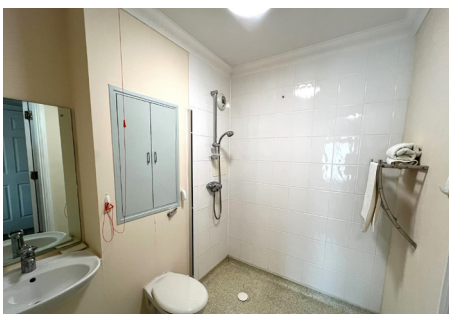


1 bedroom first floor apartment

Richmond Villages Bede is delighted to offer this well-presented resale one-bedroom, ground floor apartment. The property is perfectly situated within easy access to our lovely on-site facilities including the restaurant, reception, relaxing lounges, bowling green, beautifully manicured gardens, orchard, and hair salon.

Specification

- Charming one bedroom, first floor apartment
- Assisted Living
- The living dining room is well proportioned and the room is flooded with natural light and features French double doors with a Juliet balcony.
- The lovely kitchenette adjoins the living space and has been superbly designed to offer a range of eye and base level units with worktops and tiled splashback.
- Generously sized bedroom with en-suite wet room
- Fantastic on-site facilities
- Centred around community & wellbeing
- Beautifully manicured gardens
- Allocated parking space for one car
- Situated within the beautiful town of Bedworth



*Satellite subscription not included.

Important Notice: These particulars are intended to give a fair and substantially correct overall description. **Other fees and charges apply**, please contact the Village Advisers for further details. Properties are sold on a 125 year lease and this property has 111 years remaining.

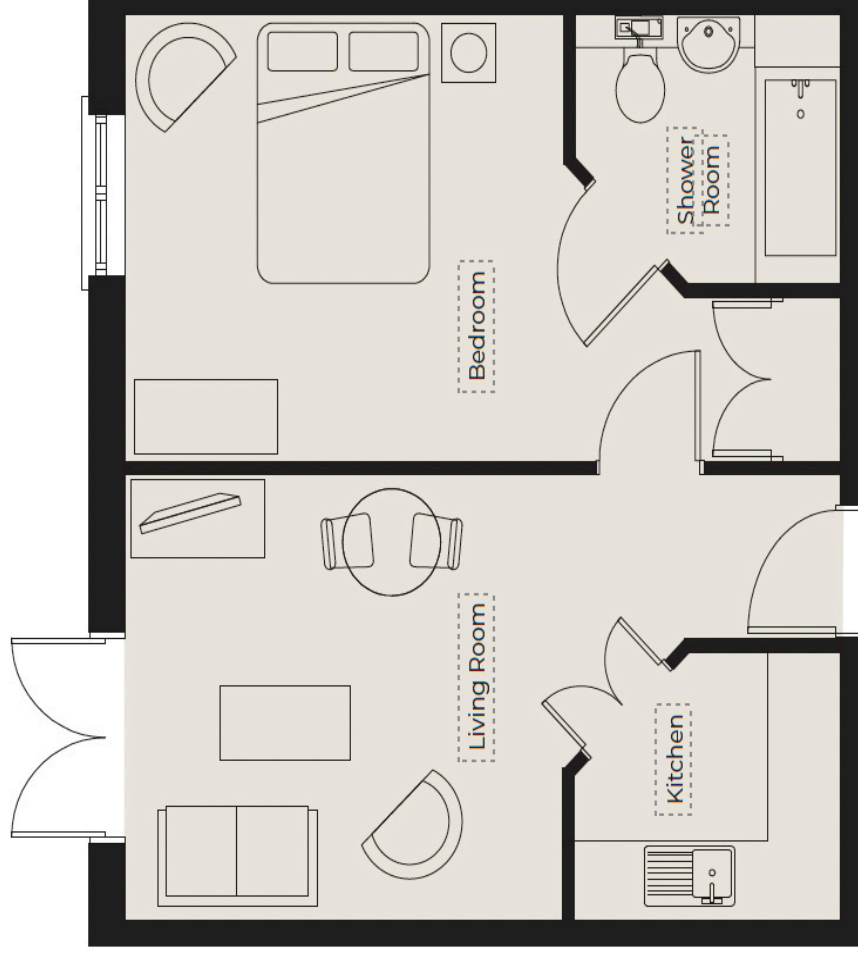
02476 645 544
bede@richmond-villages.com

Richmond Villages Bede,
Hospital Lane, Bedworth, CV12 0PB

15 Boveney

First Floor

Kitchen	2467mm x 2010mm
7'11" x 6'6"	
Living Room	3657mm x 3505mm
12' x 11'5"	
Bedroom	3657mm x 3505mm
12' x 11'5"	
Shower Room	2467mm x 2010mm
7'11" x 6'6"	



These particulars are intended to give a fair and substantially correct overall description. Measurements have been taken at 1500mm skimming height. All dimensions are approximate. Bedroom measurements include the wardrobe if applicable. Room measurements include bay windows if applicable. Furniture layout is to give an indicative impression. Although all efforts have been made to ensure its accuracy at time of print dimensions, fixtures, fittings, finishes and specifications are subject to change without notice. The properties are sold unfurnished.

